

DATUM
 To Convert to State Plane
 Ysp = Yp + 618,000 x .9999064
 Xsp = Xp + 1,600,000 x .9999064

WASHINGTON COUNTY
 SOUTH ZONE FACTOR

SECTIONS 18 and 17 T. 27 N., R. 20 W.

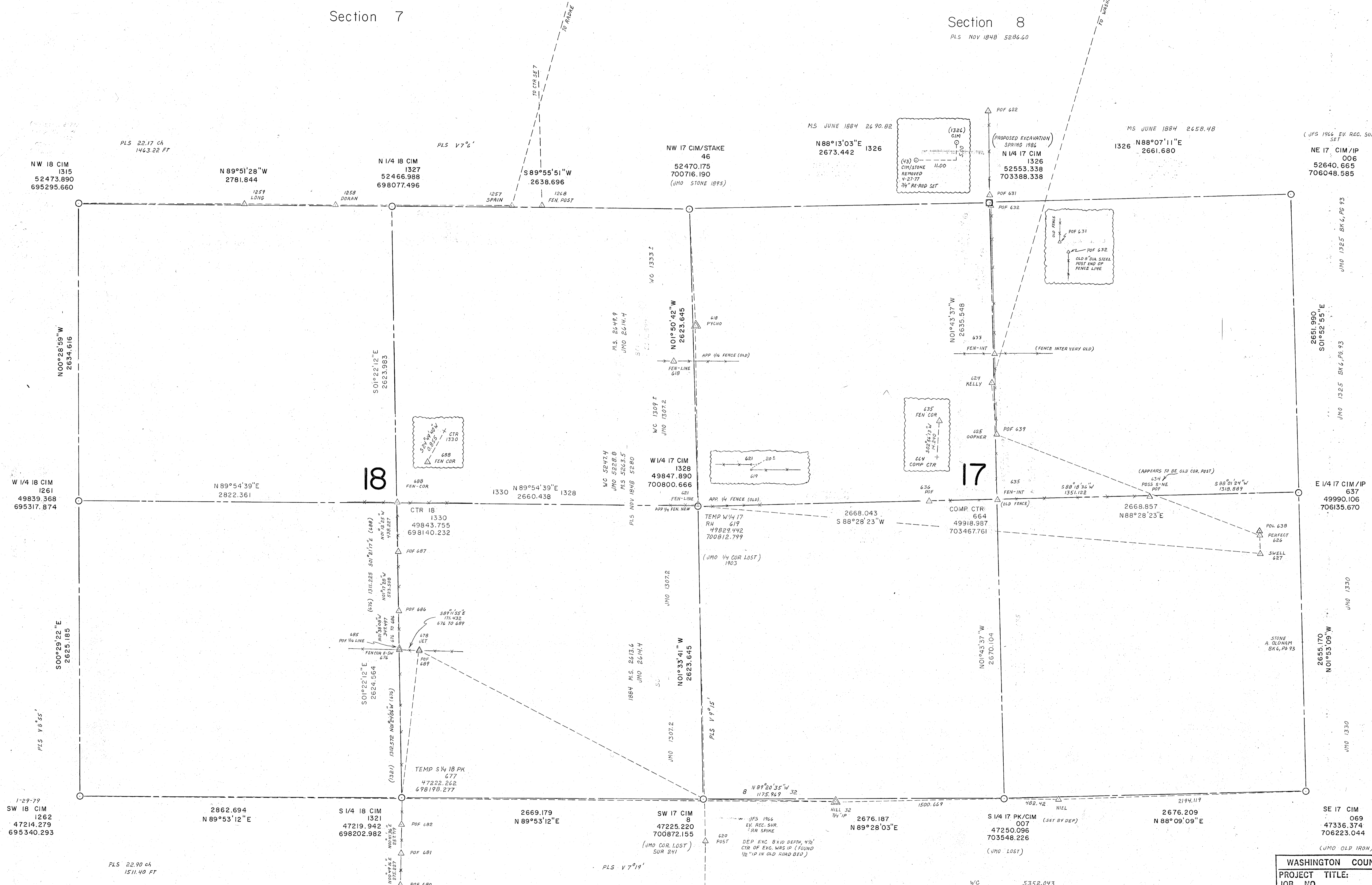
PLS NOV 1848
 MS JUNE 1884 SUR 41
 JMO MAY 1903 BK 3, 154, BK 6, 93

Section 7

Section 8
 PLS NOV 1848 5286.60

Section 13, T. 27 R. 21

Section 16



PLS 22.17 ch
 1443.22 FT

PLS V 7° 2'

MS JUNE 1884 2690.82

MS JUNE 1884 2458.48

(JFS 1946 EV REC. SUR.)
 SET

NW 1/4 18 CIM
 1315
 52473.890
 695295.660

N 89° 51' 28" W
 2781.844

N 1/4 18 CIM
 1327
 52466.988
 698077.496

NW 1/4 17 CIM/STAKE
 46
 52470.175
 700716.190
 (JMO STONE 1895)

N 88° 13' 03" E
 2673.442 1326

N 1/4 17 CIM
 1326
 52553.338
 703388.338

N 88° 07' 11" E
 2661.680

NE 1/4 CIM/IP
 006
 52640.665
 706048.585

W 1/4 18 CIM
 1261
 49839.368
 695317.874

N 89° 54' 39" E
 2822.361

1330 N 89° 54' 39" E
 2660.438 1328

W 1/4 17 CIM
 1328
 49847.890
 700800.666

NO 1/4 17 CIM
 1328
 49847.890
 700800.666

E 1/4 17 CIM/IP
 637
 49990.106
 706135.670

S 00° 29' 22" E
 2625.185

S 01° 22' 12" E
 2623.983

NO 1/4 17 CIM
 1328
 49847.890
 700800.666

NO 1/4 17 CIM
 1328
 49847.890
 700800.666

E 1/4 17 CIM/IP
 637
 49990.106
 706135.670

SW 1/4 18 CIM
 1262
 47214.279
 695340.293

2862.694
 N 89° 53' 12" E

S 1/4 18 CIM
 1321
 47219.942
 698202.982

SW 1/4 17 CIM
 8
 47225.220
 700872.155

S 1/4 17 PK/CIM
 007
 47250.096
 703548.226

SE 1/4 CIM
 069
 47336.374
 706223.044

PLS 22.90 ch
 1511.40 FT

PLS V 7° 19'

W/C 5352.043
 JMO 1903 5342.70
 PLS NOV 1848 5299.80

Section 20
 JMO 1903 SUR 241 5349.23

WASHINGTON COUNTY SURVEYOR			
PROJECT TITLE:			
JOB NO.			
INSTRUMENTATION	BY	DATE	CK. BY DATE
COMPUTATION			
DRAWN	PRJ	4/20/77	
NAD27 - FOR REFERENCE ONLY			R. L. S. NO.

SEC. 18-17 T. 27 R. 20