

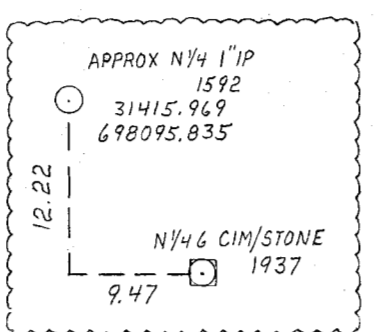
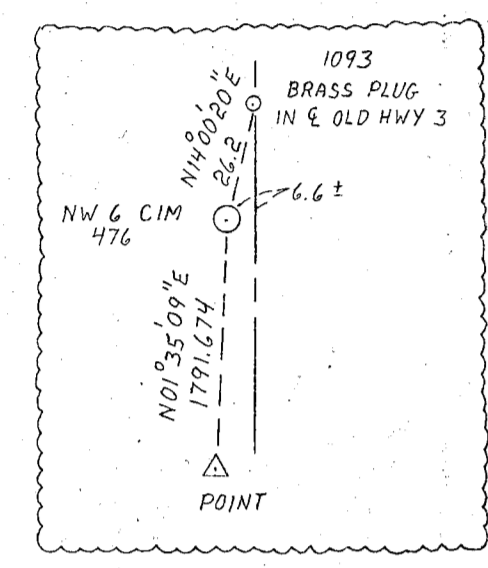
DATUM
 To Conform To State Plane
 Yp = Yp + 895,000 + 0.999955
 Xp = Xp + 1,801,000 + 0.999954

SECTIONS 6 and 5, T. 26 N., R. 20 W.

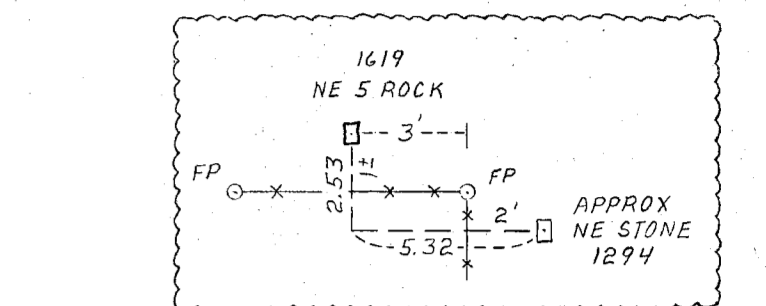
1847 SEPT. PLS 5280
 1900 JUNE, JMO 5269.44

Section 31, T.27 R.20

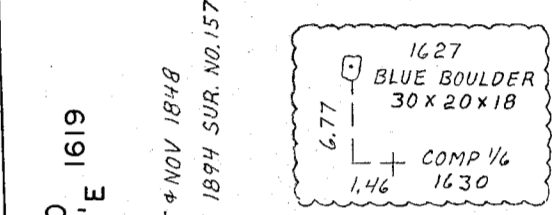
Section 32, T.27 R.20



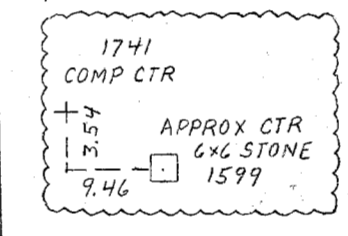
N 1/4 SEC 5
 1900 DEC, JMO SUR 211 NO MONT. AT NW
 1978 JUNE 12, W.C. SET CIM LOST
 1980 DEC. 10, W.C. RE-ESTABLISHED CIM (SEE NE)
 IN LOST POSITION, REPLACED
 CIM SET 4/10/78 WITH IP
LOST POSITION
 NW 1/4 CIM (SET 12/10/80)
 1740
 31502.226
 703366.509



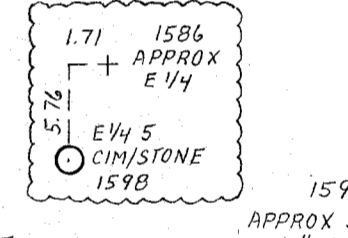
(FOUND 1880)
NE SEC 5
 1894 JMO SUR. 157
 LIMEROCK 30x30x8
 1900 JMO SUR. 201
 LARGE BOULDER
 1904 LNC FIELD STONE
 WITH CHISEL MARK
 1972 PAJ STONE 8x8x18
 1980 FOUND LIMEROCK
 ON END 20x24x8
 STANDING ON END



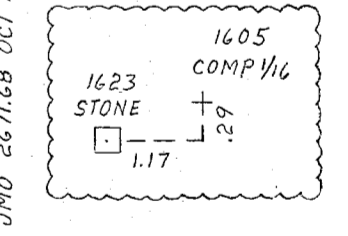
BRANDY 1583
 1894 JMO BLUE ROCK
 30x24x18 NOTCH
 IN TOP
 1980 FOUND BLUE BOULDER
 ON END 30x20x18
 POSSIBLE NOTCH ON TOP



COMP CTR 5
 1741
 28861.128
 703422.872



1586 APPROX S-NW 4
 3/4 IP HSJ



1890 JMO LIMEROCK
 24x18x8 DRILLHOLE
 1980 OCT 20 FOUND
 LIMEROCK 24x18x10
 WITH DRILLHOLE

WASHINGTON COUNTY SURVEYOR			
PROJECT TITLE:			
JOB NO.			
INSTRUMENTATION	BY	DATE	CK. BY DATE
COMPUTATION			
DRAWN	PRJ	9-10-80	SAVE
R.L.S. NO.			

Section 1, T. 26 R. 21

Section 4

Section 7

Section 8

NAD27 FOR REFERENCE ONLY
 SEC. 6-5, T. 26 R. 20