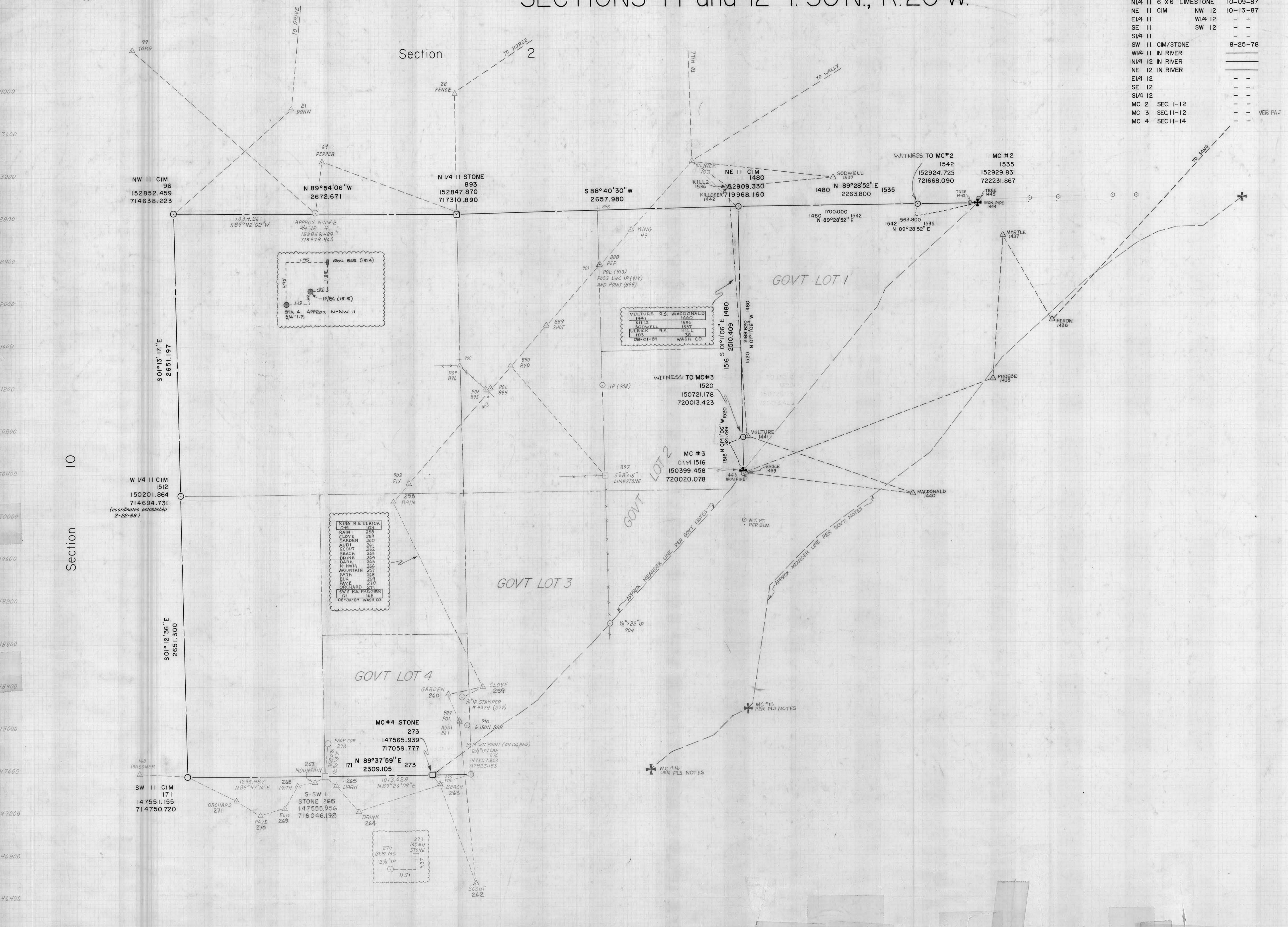


SECTIONS 11 and 12 T.30N., R.20 W.

CERTIFICATE OF LOCATION DATE SIGNED

NW 11	-	-	VER PAJ
N1/4 11	6" X 6" LIMESTONE	10-09-87	
NE 11	CIM	NW 12	10-13-87
E1/4 11	WI/4 12	-	-
SE 11	-	-	-
S1/4 11	-	-	-
SW 11	CIM/STONE	8-25-78	
WI/4 11	IN RIVER	-	-
N1/4 12	IN RIVER	-	-
NE 12	IN RIVER	-	-
E1/4 12	-	-	-
SE 12	-	-	-
S1/4 12	-	-	-
MC 2	SEC. 1-12	-	-
MC 3	SEC. 11-12	-	-
MC 4	SEC. 11-14	-	VER PAJ



Revised: 1-27-88, North line, NE & N1/4 Cor's Sec. 11, KRY;
 " 2-23-89, WI/4 cor. coordinates Sec. 11, ARH;
 " 8-03-89, Added REF. MON. TO MC#2 & MC# 2, 3 & 4, ARH;
 " 9-11-89, Added REF. MON. TO MC#2, ARH;
 " 4-11-90, Bearing on North line of NW 1/4, ARH,
 Sec. 11

WASHINGTON COUNTY SURVEYOR

PROJECT TITLE:
 JOB NO.

	BY	DATE	CK. BY	DATE
INSTRUMENTATION				
COMPUTATION				
DRAWN	PRJ	7/31/81		

R. L. S. NO.

NAD27-FOR REFERENCE ONLY