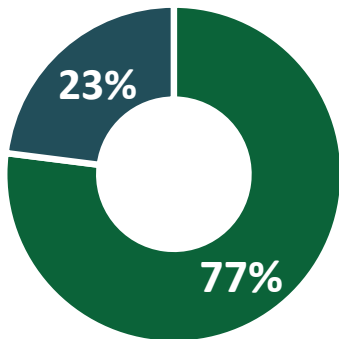


# Community Corrections Funding

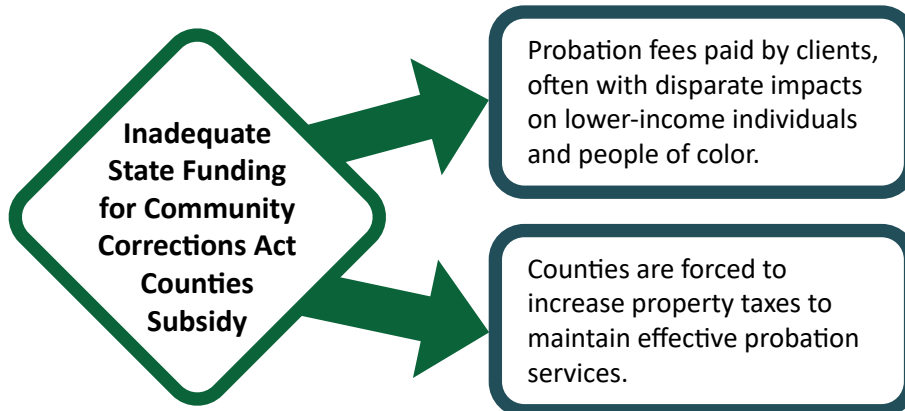
Washington County supports a 4% increase in base funding for the Community Corrections Act subsidy for each year of the next biennium.

## Issue At-A Glance

- The continued lack of state funding contributes to a reliance on probation fees paid by clients, which may create barriers to success, often with disparate impacts on lower-income individuals and people of color. This also forces counties to increase property taxes to maintain effective probation services, further shifting financial responsibility from the state to local level.
- Community Corrections Act Counties are an essential part of providing cost-effective community supervision to offenders in the community.
- Washington County is a national leader, providing advanced and effective community-based behavioral changing interventions.
- Minnesota's criminal justice system is largely a state responsibility that relies heavily on community supervision as an alternative to costly imprisonment.



Currently, the state provides Washington County only 23% of its funding for Corrections, while the remainder is covered through property tax dollars and client fees. The state has not fulfilled its responsibility to provide balanced funding for this effective community-based alternative to costly incarceration.



## Support

The Minnesota Association of Community Corrections Act Counties (CCA), the Minnesota Inter-County Association, and the Association of Minnesota Counties.

Legislators in both bodies expressed bipartisan support for increases in community supervision during the 2020 and 2021 legislative session.

## Previous Consideration

The 2021 Legislature provided a one-time increase in funding for CCA counties which was helpful. The inflationary costs for the CCA counties are estimated to be, on average, 4% per year.

## No Action

Counties will continue to assume a larger financial responsibility for funding alternatives to expensive state imprisonment through property tax dollars. Counties that are unable to support levy increases will likely be required to cut staff positions, which could have negative impacts on public safety outcomes.

## Financial Implications

County property tax dollars will be needed to cover any increased cost of community supervision or services would be reduced to reflect current resources.

## Contact

**Terry Thomas** | Director  
Washington County Community Corrections  
651-430-6951  
terry.thomas@co.washington.mn.us