

WASHINGTON COUNTY
NATURAL RESOURCES PROTECTION
AND MANAGEMENT
SYSTEM FRAMEWORK

FEDERAL, STATE, COUNTY, LOCAL
AND EASEMENT PROTECTED LANDS

KEY TO FEATURES


PROTECTED LANDS





-  WILDLIFE MANAGEMENT AREA
-  SCIENTIFIC AND NATURAL AREA
-  NATIONAL PARK SERVICE LAND
-  CONSERVATION & SCENIC EASEMENTS
-  PARK RESERVE
-  NATURE CENTER - Semi Protected

PARKS

-  STATE PARK
-  COUNTY PARK
-  CITY PARK

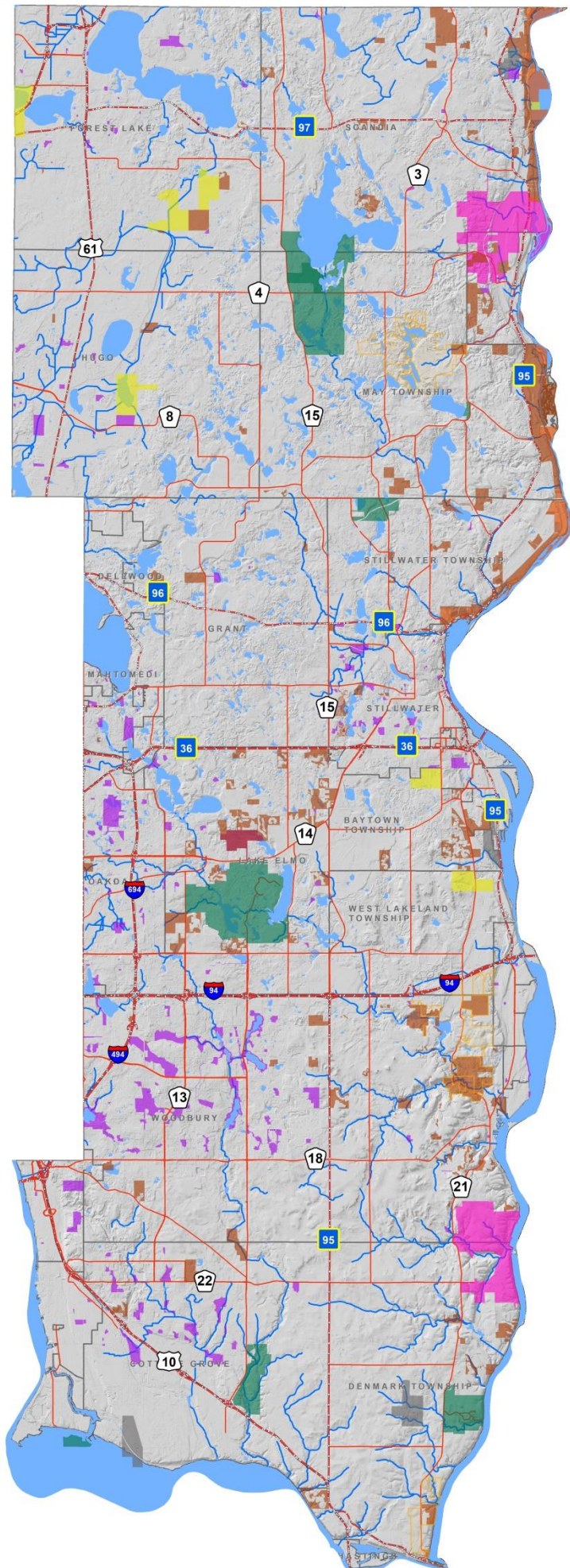
ROADS

-  Interstate/Highway
-  County Road

-  COUNTY
-  MUNICIPALITIES
-  LAKES
-  STREAMS

Digital Elevation Model- Hillshade

- Value**
-  High : 254
 -  Low : 0



SOURCE DATA

- State WMA Boundaries, MNDNR
- State Scientific and Natural Areas, MNDNR
- National Park Service Lands, NPS
- Easements, Washington County
- Park Reserves, Washington County
- Parks, Washington County
- Municipalities, Washington County
- Road Centerlines, Washington County
- 24K Lakes, MNDNR
- 24K Streams, MNDNR
- 3-meter DEM, Washington County

PRINT DATE: JULY 2018

Map Prepared By:

