

Library Service Area Analysis



Legend

- Independent Library
- Community Library/Kiosk
- County Branch/Associate Library
- Library Kiosk
- Library

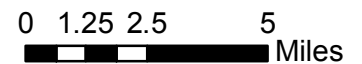
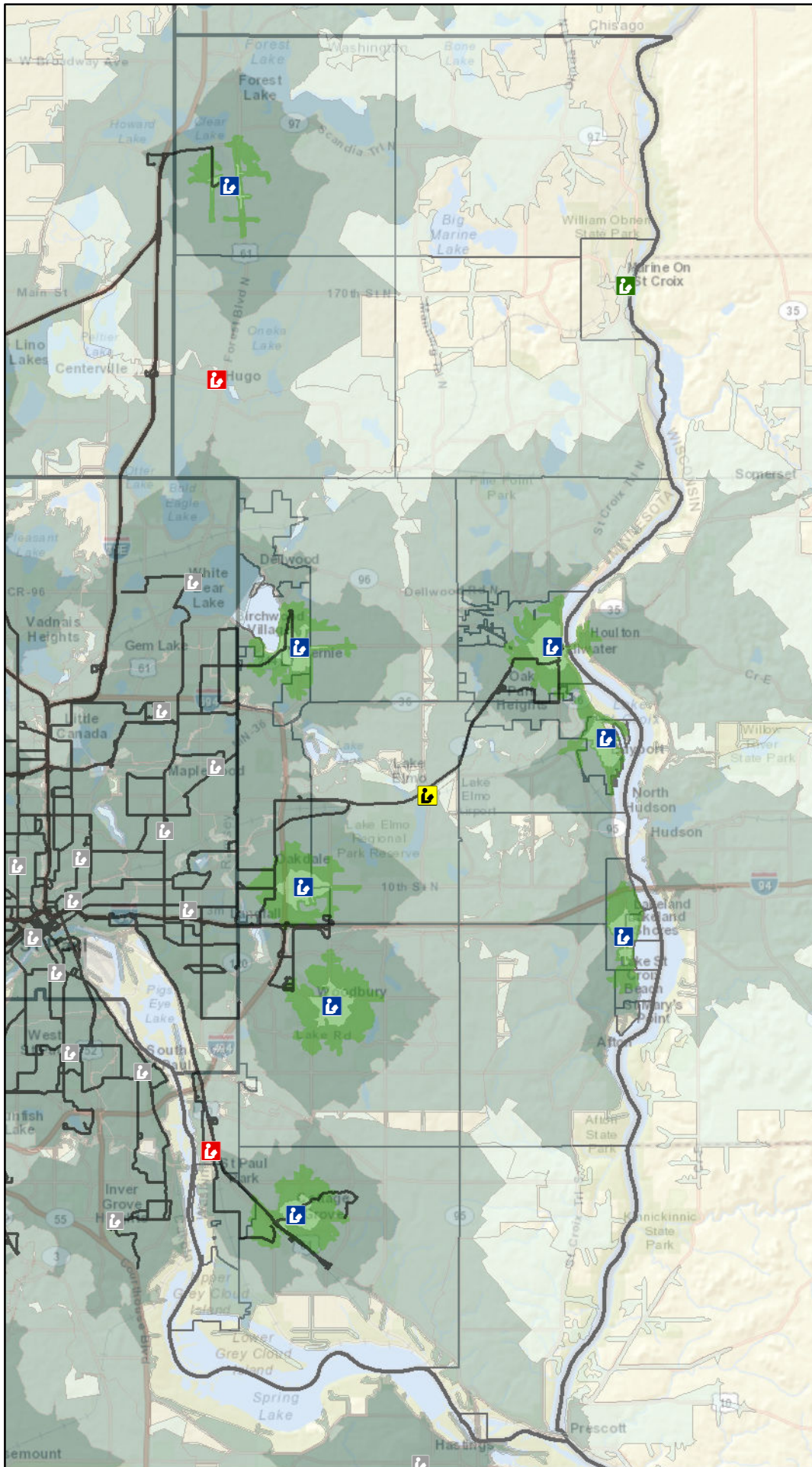
— Transit Routes

Walk Area (3.1 mph)

- 15 minutes
- 30 minutes

Travel Time Est. (posted speeds)

- 5 minutes
- 5 - 10 minutes
- 10 - 15 minutes
- Municipal Boundaries



Source: Sources: Esri, DeLorme, NAVTEQ, USGS, Intermap, iPC, NRCAN, Esri Japan, METI, Esri China (Hong Kong), Esri (Thailand), TomTom, 2013
 Washington County, Dakota
 County, Ramsey County, Anoka