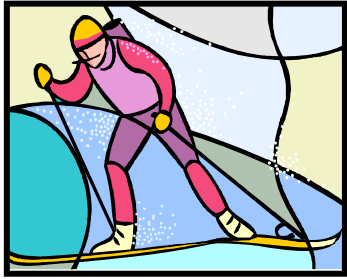




Cross-Country Ski Trails



Lake Elmo Park Reserve

Washington County Parks

Division Office: 651-430-8370
Address: 1515 Keats Ave. N.
Lake Elmo, MN 55042
www.co.washington.mn.us

Ski Conditions Hotline:
651-430-8368
E-mail:
parks@co.washington.mn.us

Emergency: Call 911

Fees

A **Washington County Parks vehicle permit** is required on all motorized vehicles. Permits can be purchased at the contact station or through the **Honor Box** when the office is closed.

The Washington County Park annual vehicle permit also provides admittance to Anoka and Carver County Parks.

Park Hours

7 a.m. to ½ hour after sunset.

Ski Trails

10.8 miles of ski trails at Lake Elmo Park Reserve are groomed in this 2,165 acre park reserve. Three loops vary from easy to intermediate. As a park reserve, 80 percent of the area must be left in a natural state. Watch for wildlife, such as white-tailed deer, red fox, squirrels, rabbits and a multitude of birds.

Shelter

The ski shelter is located next to the ski parking lot. It includes picnic tables and a wood burning stove.

MN Ski Pass

Washington County requires all cross-country skiers ages 16 and older to carry the MN State Ski Pass when skiing on Washington County ski trails. Daily or annual passes are available wherever DNR licenses are sold, Lake Elmo Park Reserve office and at Washington County License Centers.

Trail Grooming

The Washington County Parks Division grooms trails on a rotating schedule after a base of 6-8 inches is established.

Ski Trails at other Washington County Parks

- * Big Marine Park Reserve (1.5 miles)
- * Cottage Grove Ravine Regional Park (5.2 miles/8.4 km)
- * Pine Point Park Reserve (4.1 miles/6.6 km)
- * St. Croix Bluffs Regional Park (6.2 miles/9.9 km)

Programs

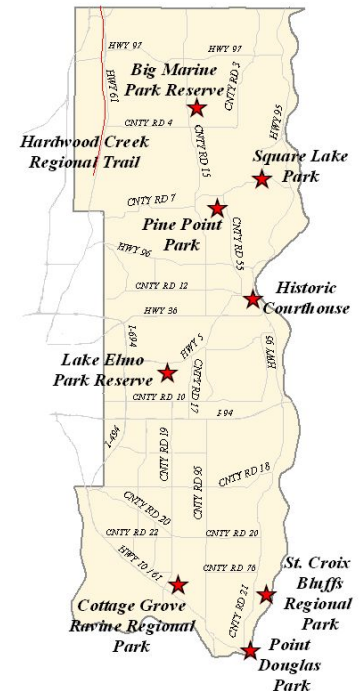
Outdoor winter nature programs are offered at Lake Elmo Park Reserve. Check the office or website for more information.

Park Rules

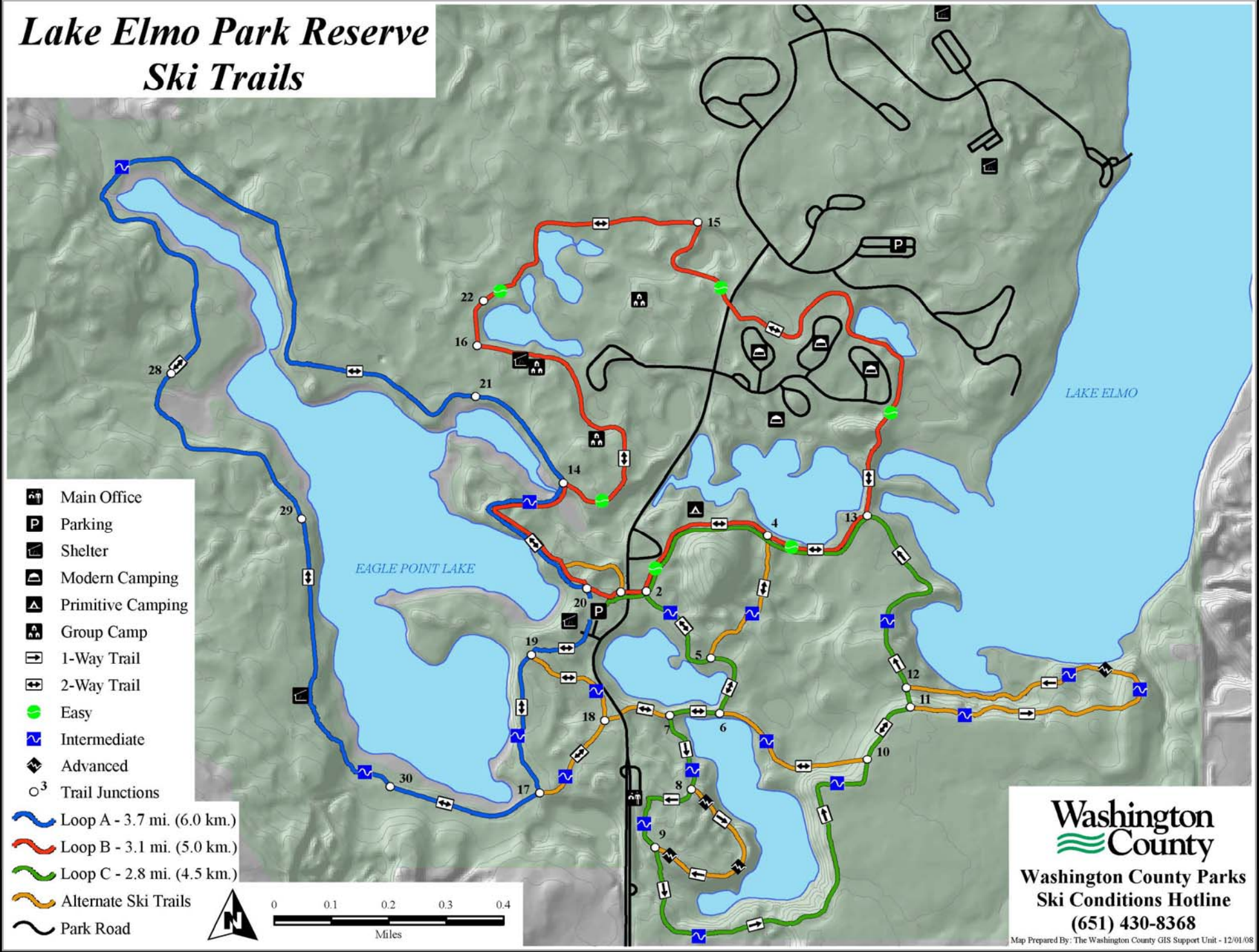
For your safety and skiing enjoyment please observe these rules.

- * Park in the designated parking lot only.
- * Ski during park hours only.
- * Ski only on groomed trails.
- * Observe directional signs.
- * Ski skating allowed on Loop A only.
- * **No dogs or hiking on ski trails.**
- * Possession or consumption of alcoholic beverages, including 3.2 beer, is prohibited.
- * Snowshoeing is prohibited on ski trails.

★ Washington County Parks ★

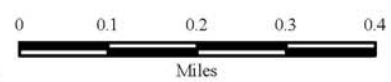


Lake Elmo Park Reserve Ski Trails



- Main Office
- Parking
- Shelter
- Modern Camping
- Primitive Camping
- Group Camp
- 1-Way Trail
- 2-Way Trail
- Easy
- Intermediate
- Advanced
- Trail Junctions

- Loop A - 3.7 mi. (6.0 km.)
- Loop B - 3.1 mi. (5.0 km.)
- Loop C - 2.8 mi. (4.5 km.)
- Alternate Ski Trails
- Park Road



**Washington
County**
Washington County Parks
Ski Conditions Hotline
(651) 430-8368
Map Prepared By: The Washington County GIS Support Unit - 12/01/08