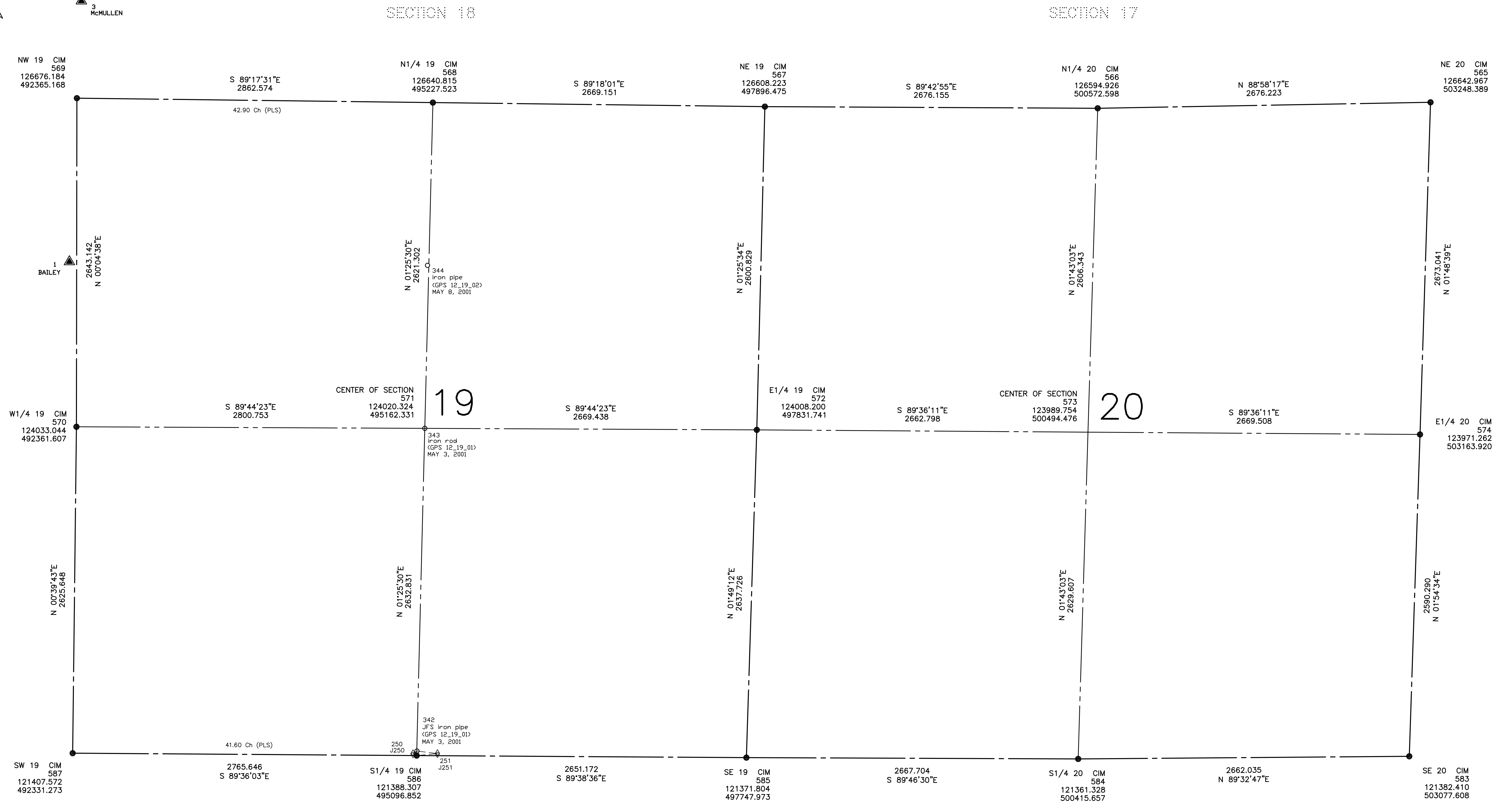
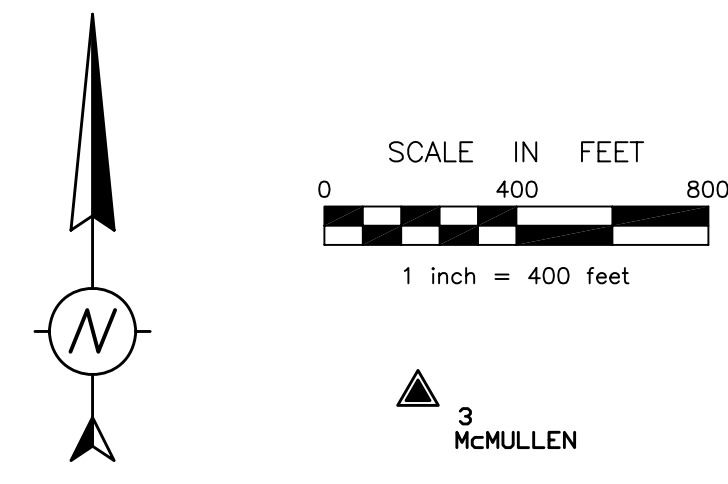


SECTIONS 19 and 20, T. 27 N., R. 20 W.

WASHINGTON COUNTY COORDINATE SYSTEM NAD 83 (1986)

DRAWN:	DATE	BY	DESCRIPTION
REVISOR:	02-22-02	JLB	
REVISOR:			
REVISOR:			



SECTION 24, T. 27 R. 21

SECTION 18

Prepared by:
WASHINGTON COUNTY DEPT. OF TRANSPORTATION & PHYSICAL DEVELOPMENT
SURVEY AND LAND MANAGEMENT DIVISION
WASHINGTON COUNTY GOVERNMENT CENTER
14949 62ND STREET NORTH
STILLWATER, MINNESOTA 55082
PHONE (651) 436-8875

SECTION 30

SECTION 28

LEGEND

- ▲ NGS STATION (NATIONAL GEODETIC SURVEY CONTROL - NAD83/1986)
- ▲ WASHINGTON COUNTY GPS CONTROL STATION (1988 ADJUSTMENT)
- ⊕ GPS STATION, TEMPORARY (DENMARK83 ADJUSTMENT)
- ◇ GPS STATION (TERTIARY)
- ▲ TRAVERSE STATION (DENMARK83 ADJUSTMENT)
- △ TRAVERSE STATION (TERTIARY)
- ■ ● ○ ● PUBLIC LAND SURVEY CORNER AS MONUMENTED (SEE NOTE)
- × COMPUTED USPLS CORNER POSITION (NOT MONUMENTED)
- LINE OF SIGHT
- GPS VECTOR
- ~ DNR PROTECTED WATER OR WETLAND

NOTES

Solid monument symbols at USPLS corners indicate position has been verified or certified. Open monument symbols indicate the position has not been verified or certified.

Information shown on this worksheet is subject to change. Users are advised to check for possible revisions. Horizontal control reports showing network configuration, station locations, adjustment results and other relevant data are available from the Washington County Survey and Land Management Division. Coordinates shown on this worksheet are based on the NAD 83 (1986) Washington County Coordinate System Datum.