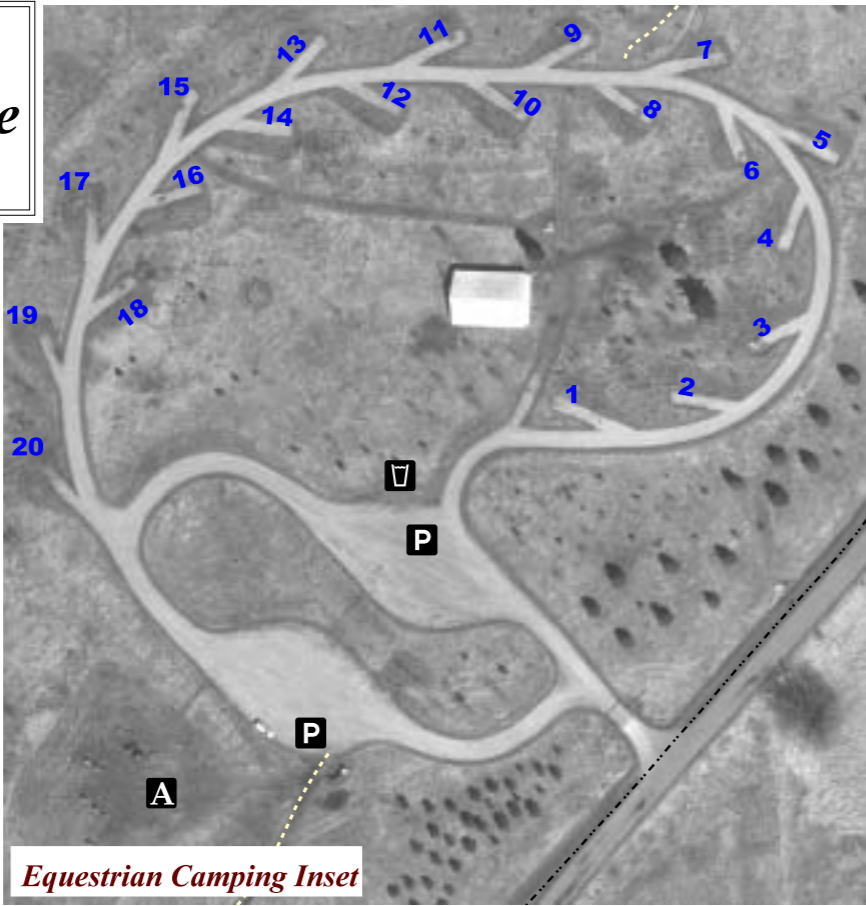


NATURE PROGRAMS:

Saturday evening nature programs are offered from Memorial Day through Labor Day Weekend. They begin at 7:15 p.m. at the amphitheater in the modern campground. Trail access to the amphitheater starts across from the playground/bathroom. Check the office for program topics and changes.

CAMPGROUND RULES:

- *NO PETS allowed.
- *ALCOHOL, including 3.2 beer, is not permitted in the park.
- *ONE CAMPING UNIT per site.
- *ALL VEHICLES, including tent trailers, must park on the gravel PAD. Boat trailers may park on the grass.
- *EXTRA VEHICLES may park at the guest parking lots.
- *VISITORS to your site must have a vehicle permit.
- *QUIET HOURS: 10:00 p.m. to 7:00 a.m.
- *If the WEATHER SIREN goes off, take shelter in one of the bathroom buildings.
- *CHECKOUT time is 1:00 p.m.
- *RE-REGISTER by 11:00 a.m.
- *FIRES PERMITTED in fire rings or self-contained grills only.
- *CUTTING park trees and GATHERING dead firewood is prohibited. FIREWOOD is available at the park office or from the Camp Hosts.
- *You must CHANGE sites every 7 days. Prior approval must be obtained from the office before changing sites.
- *GATE CLOSES ½ hour after sunset, OPENS at 7:00 a.m. A camper's GATE CARD is available at the park office, for a \$10.00 deposit.
- *MANAGEMENT reserves the right to ask any camper to leave.
- *Parent or guardian MUST accompany campers under 18.
- *FIREWORKS are prohibited.
- *Please alert the Park Office or Camp Hosts of any problems.
- *GARBAGE cans/bags are not provided to campers.
- *DUMPSTERS are located near the modern campground entrance.



Equestrian Camping Inset

HOURS:

PARK: 7 a.m. to ½ hour after sunset.
 PARK OFFICE: April, May, Sept. Oct.: 8:00 a.m. to 6:00 p.m.
 Memorial Day - Labor Day : 8:00 a.m. to 8:30 p.m.
 November - March: 8:00 - 4:00 daily.
 AFTER HOURS: Check-in with the CAMP HOST in site 17 or 21.
 BEACH HOURS: 9 a.m. to 9 p.m., Memorial Day through July 31,
 9 a.m. to 8 p.m., August 1 to Labor Day.

ADDRESS:

Lake Elmo Park Reserve
 1515 Keats Ave.
 Lake Elmo, MN 55042

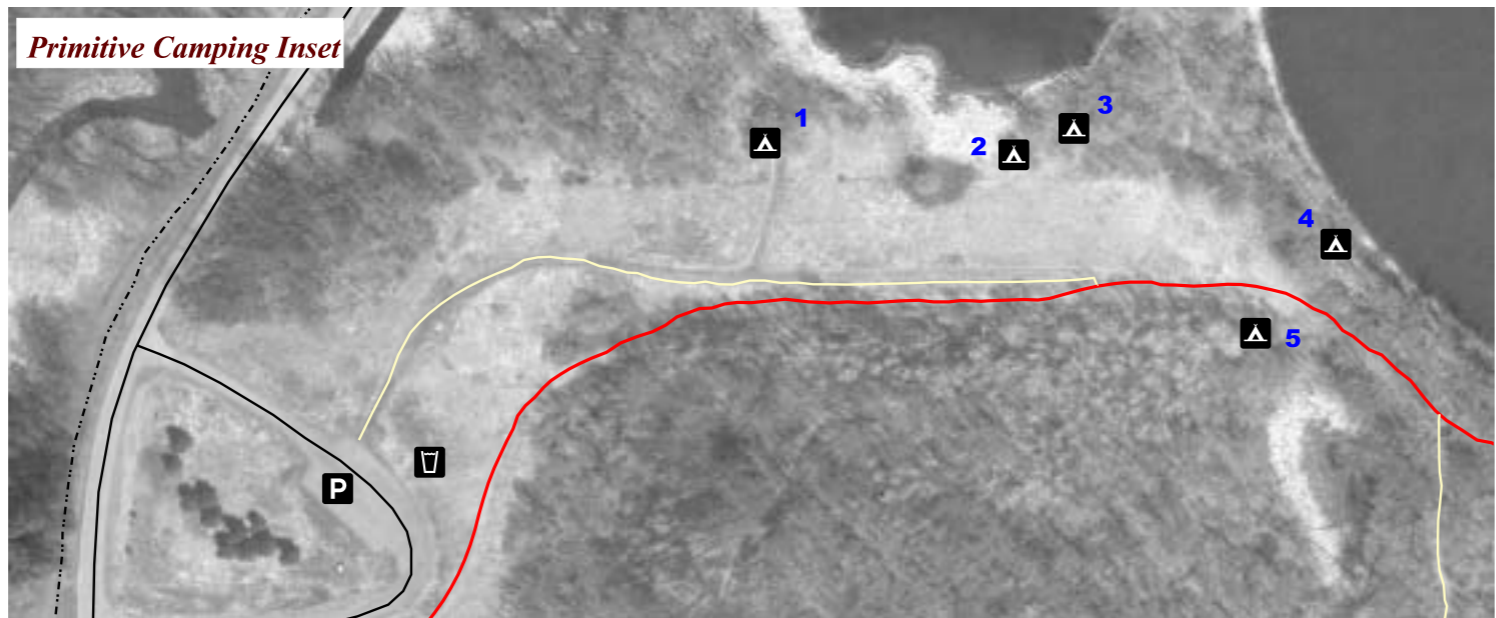
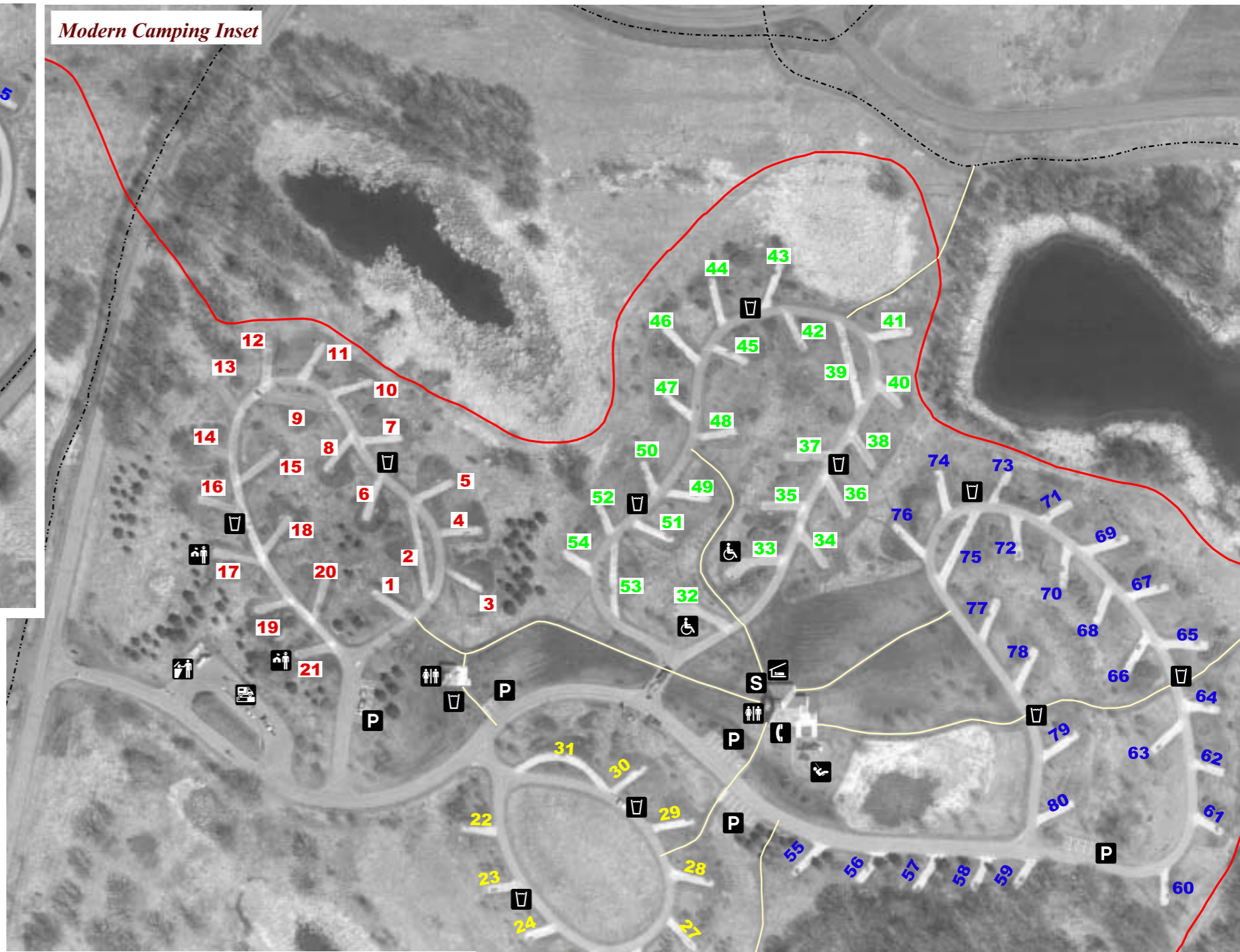
WEBSITE:

www.co.washington.mn.us

E-MAIL:

parks@co.washington.mn.us

Modern Camping Inset



Primitive Camping Inset

- | | | | |
|--|------------------|--|---------------------|
| | Amphitheater | | Phone |
| | Archery Range | | Picnic Shelter |
| | Camp Host | | Playground |
| | Dumpsite | | Primitive Camp Site |
| | Dumpster | | Restrooms |
| | Guest Parking | | Shower |
| | Handicapped Site | | Water Station |

EMERGENCY: Dial 911