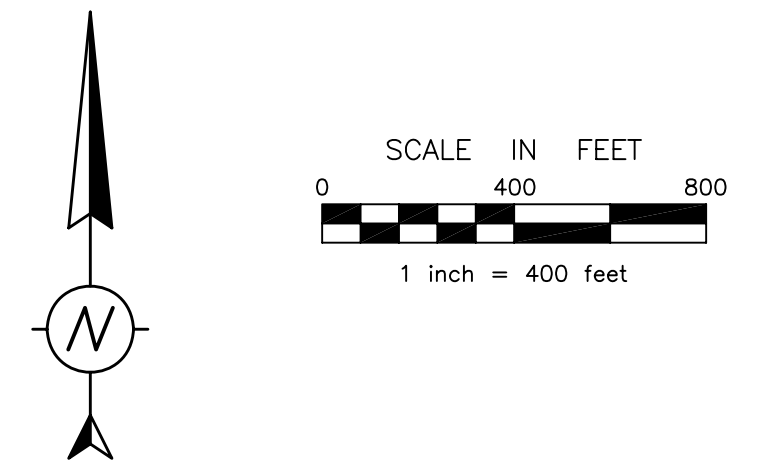


# SECTIONS 17 and 18, T. 27 N., R. 20 W.

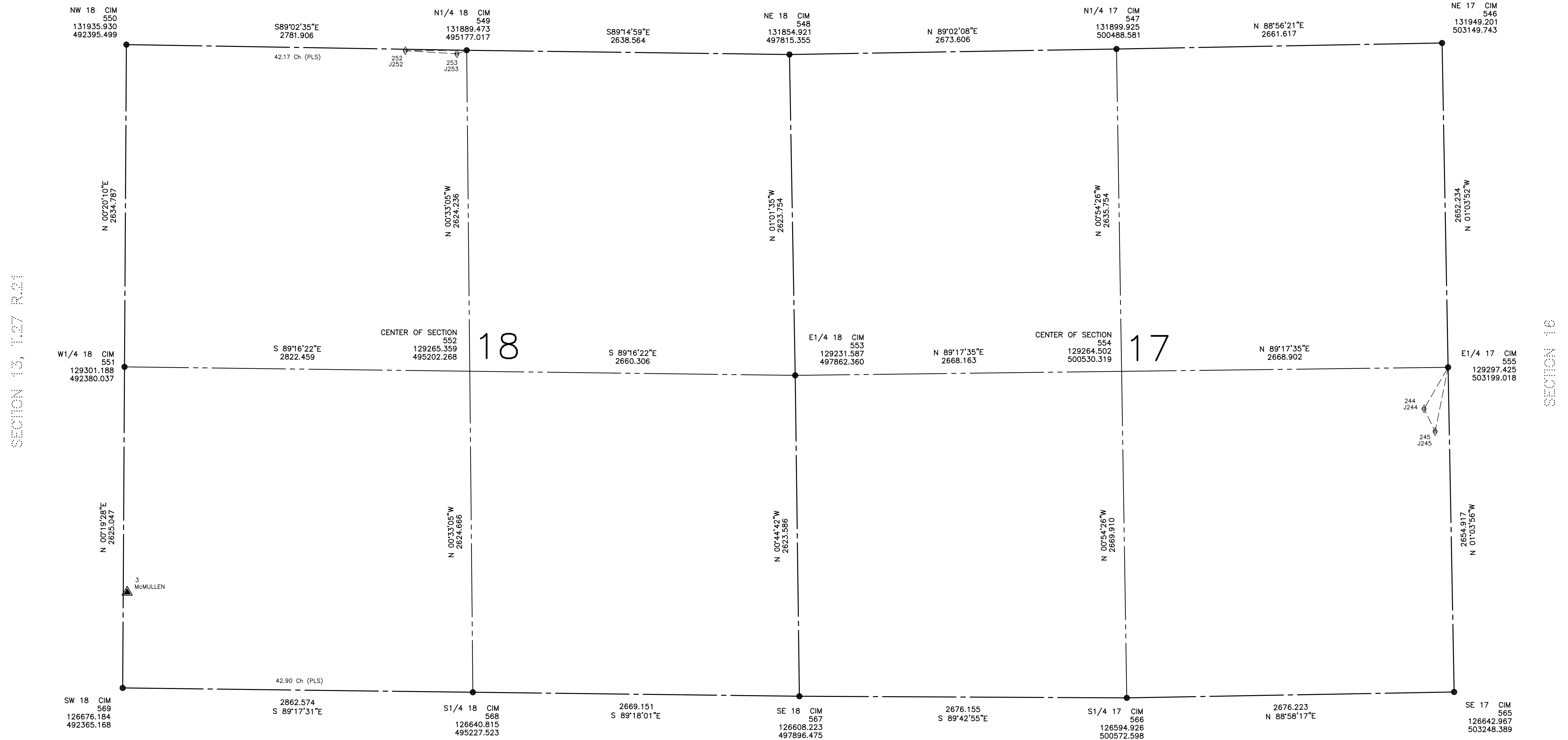
## WASHINGTON COUNTY COORDINATE SYSTEM NAD 83 (1986)

DRAWN:	DATE	BY	DESCRIPTION
	02-22-02	JLB	
REVISED:			
REVISED:			



SECTION 7

SECTION 8



SECTION 13, T.27 R.21

SECTION 16

SECTION 10

SECTION 20

### LEGEND

- |   |   |         |  |
|---|---|---------|--|
| ▲ | NGS STATION (NATIONAL GEODETIC SURVEY CONTROL - NAD83/1986) | □ ■ ○ ● | PUBLIC LAND SURVEY CORNER AS MONUMENTED (SEE NOTE) |
| ▲ | WASHINGTON COUNTY GPS CONTROL STATION (1988 ADJUSTMENT)     | ×       | COMPUTED USPLS CORNER POSITION (NOT MONUMENTED)    |
| ◇ | GPS STATION, TEMPORARY (DENMARK83 ADJUSTMENT)               | ---     | LINE OF SIGHT                                      |
| ◇ | GPS STATION (TERTIARY)                                      | ---     | GPS VECTOR   |
| ▲ | TRAVERSE STATION (DENMARK83 ADJUSTMENT)                     | —       | DNR PROTECTED WATER OR WETLAND                     |
| △ | TRAVERSE STATION (TERTIARY)                                 |         |  |

### NOTES

Solid monument symbols at USPLS corners indicate position has been verified or certified. Open monument symbols indicate the position has not been verified or certified.

Information shown on this worksheet is subject to change. Users are advised to check for possible revisions. Horizontal control reports showing network configuration, station locations, adjustment results and other relevant data are available from the Washington County Survey and Land Management Division. Coordinates shown on this worksheet are based on the NAD 83 (1986) Washington County Coordinate System Datum.

Prepared by:  
WASHINGTON COUNTY DEPT. OF TRANSPORTATION & PHYSICAL DEVELOPMENT  
SURVEY AND LAND MANAGEMENT DIVISION  
WASHINGTON COUNTY GOVERNMENT CENTER  
14949 62ND STREET NORTH  
STILLWATER, MINNESOTA 55082  
PHONE (651) 430-8875