

# Washington County 2008 Community Health Assessment

---

---

## Table of Contents

Introduction . . . . .	2
County Description . . . . .	6
County Health & Environmental Indicators. . . . .	12
County Demographics . . . . .	18
Obesity . . . . .	41
Mental Illness . . . . .	51
Chronic Disease . . . . .	60
Water Quality . . . . .	72
Emergency Preparedness. . . . .	80
Alcohol, Tobacco and Other Drugs . . . . .	86
Aging . . . . .	99
Abuse and Neglect . . . . .	114
Waste Management . . . . .	123
Access to Health Care . . . . .	129
Inappropriate Risk-Taking Behaviors . . . . .	139
Transportation . . . . .	151

# Washington County

## 2008 Community Health Assessment

---

---

### Community Health Assessment Overview

A Community Health Assessment is a regular and systematic collection, analysis and dissemination of information on the health of the community. It includes updated health data, community involvement and identification of key public health problems based on the assessment. This document provides a summary of the twelve county public health issues identified through the 2008 assessment process, as well as a summary of community input, key data, and community assets and community risks.

The Local Public Health Act of 2003 (MN Statutes 145A.10, Subd. 5a) requires Community Health Boards to set public health priorities based on a community health assessment conducted every five years. The Washington County Community Health Board (CHB) consists of the following members:

[Dennis Hegberg](#), Washington County Commissioner, District 1

[Bill Pulkrabek](#), Washington County Commissioner, District 2

[Gary Kriesel](#), Washington County Commissioner, District 3

[Myra Peterson](#), Washington County Commissioner, District 4

[Lisa Weik](#), Washington County Commissioner, District 5

The 2008 Community Health Assessment was conducted by staff at the Washington County Department of Public Health & Environment on behalf of the Washington County Community Health Board. It is intended to be a resource for communities and organizations in their work to improve the health of county residents and the environment.

---

### Community Input

One goal of the Department's 2008 Community Health Assessment process was to provide many opportunities for community input. Between November of 2007 and February of 2008, more than 1,370 individuals expressed their health and environmental concerns through the following tools and activities:

- ◆ *On-line health and environmental survey*: This on-line survey of 90+ questions asked county residents and those who work in the county to rate their level of concern on various health and environmental issues pertaining to children, adults, and seniors. Questions focused on general health, maternal health, chronic diseases, mental health, safety, infectious diseases, emergency preparedness, and the environment. There were 497 respondents.
- ◆ *Senior survey*: This 1-page, 3-question survey targeted those age 65 years and older. The survey was distributed in the Stillwater Senior Center monthly newsletter, at the Department of Public Health and Environment flu clinics, and through county public health nurses and social workers to their clients. Over 60 seniors completed this survey.
- ◆ *Focus groups*: Participants in 9 focus groups shared their opinions on what are the most critical health and environmental issues facing the county. See participant listing on page 3.
- ◆ *Interviews* with participants in the Women, Infant and Children (WIC) program. Brief one-on-one voluntary interviews asked people about their primary health and environmental concerns. Over 85 interviews were completed.

# Washington County

## 2008 Community Health Assessment

---

---

- ◆ *Key informant interviews:* Key informant interviews were held with two individuals who work intimately with Hispanic/Latino individuals in Washington County and the surrounding area.
- ◆ *Youth Environmental Survey:* A 1-page environmental survey was completed by over 590 students in grades 7 and 8 in order to gauge their perspective on environmental issues and concerns within the county.

The following groups and individuals provided community input through surveys, interviews and focus groups:

- ◆ Washington County Chemical Health Action Collaborative
- ◆ Washington County School Nurse Group
- ◆ A Spanish Bilingual Cultural Liaison at School District 622 (North St. Paul, Maplewood, Oakdale)
- ◆ Children's Mental Health Action Collaborative
- ◆ Community Health Action Team
- ◆ Residents & those working in the county who completed an on-line health and environmental survey
- ◆ St. Croix Alliance
- ◆ Seniors ages 65 and older who completed a health and environmental survey
- ◆ South Washington County I.S.D. #833, English as a Second Language classes
- ◆ Students who participated in an environmental survey
- ◆ Users of Washington County's Public Health Nurse Programs
- ◆ Users of the Women, Infant and Children Program at the Department of Public Health and Environment
- ◆ Washington County Community Services Adult Services Case Managers
- ◆ Washington County Community Services Developmentally Disabled Services Case Managers
- ◆ Washington County Community Services Workforce Center staff
- ◆ Washington County Suicide Prevention Group (now known as Mental Wellness Initiative-Washington County)
- ◆ Washington County Water Consortium



**Public Health**  
Prevent. Promote. Protect.

# Washington County

## 2008 Community Health Assessment

---

---

### Key Health & Environmental Problems

Based on analysis of key health and environmental data and on community feedback, the Department's Community Assessment Leadership Team (CALT) identified twelve health and environmental problems. These problems were then prioritized by both CALT and by the Department's managers based on six criteria: the level of community concern, the number of people directly affected by or at-risk for the problem, the change in the problem over time based on available data, the ability to prevent or reduce the problem, the extent of the gap between existing community resources addressing the problem and the need for resources, and the extent to which the problem impacts special populations differently.

The 2008 health and environmental problems identified through the community health assessment are:

- ◆ **Obesity** in children and adults due to poor nutrition and physical inactivity
- ◆ Undiagnosed and untreated **mental health problems** among children and adults due to stigma and inaccessible resources
- ◆ Premature death and disability from **chronic diseases** due to unhealthy lifestyles and delayed detection of medical conditions
- ◆ Impaired groundwater and surface **water quality** due to improper use and disposal of pollutants
- ◆ Limited ability of communities to effectively **respond to and recover from emergencies** due to gaps in planning and training activities
- ◆ Illegal use and abuse of **alcohol, tobacco and other drugs** among youth and adults
- ◆ Unmet physical, mental and social **needs of the aging population** due to limited resources/services and inadequate personal planning
- ◆ Risk of **abuse and neglect** of children and vulnerable adults due to inadequate parenting, caregiver support and resources
- ◆ Improper **waste management** due to inadequate information, incentives, alternatives or regulations
- ◆ Residents **unable to access appropriate health resources and care** due to cultural and socio-economic barriers.
- ◆ **Inappropriate risk behaviors** by adolescents and young adults due to inadequate and inconsistent family and community support for healthy youth development
- ◆ Reduced physical, mental and economic health for residents due to limited access to **transportation**

A complete description of these key health and environmental problems can be found in this Community Health Assessment document.

# Washington County

## 2008 Community Health Assessment

---

---

### Next Steps

Each of the health and environmental problems will be reviewed to determine the department's role in addressing the problem during the next five years. Improvement plans will be developed for each of the twelve problems.

---

### Acknowledgements

Thank you to all the individuals and groups who participated in the 2008 Community Health Assessment: Washington County Board of Commissioners; the aforementioned groups and the public who provided input through focus groups, surveys, and interviews; Natasha Fleishman, Leticia Stabrino, Luis Brown Pena, Julia Welter, Barbara Green, Rebecca Kropelnicki, Karla Bataglia, Sue Boettner, Mike Huntley, Ed Gorman, Bob Byerly, Sarah Jones, Sharon Johnson, Joan Kneusel, Shelly Rock, Robert Pettitt, Theresa Pines, Ann Bellows, Washington County staff from the Property Records and Taxpayer Services and Community Services, and the entire staff of the Washington County Department of Public Health and Environment.

**The Community Assessment Leadership Team** consisted of the following staff members from the Department of Public Health and Environment:

Stephanie Lenartz , Associate Planner, Project Coordinator  
Sue Hedlund, Deputy Director, Project Advisor  
Gary Bruns, Environmental Health  
Sara Felland, Family Health  
Pat Galligher, Healthy Communities  
Christy Lee, Long-term Care  
Amy Linder-Hewitt, Disease Prevention & Control and Family Health  
Ryan Meverden, Emergency Management  
Emily Robb, Family Health  
Patrick Waletzko, Emergency Management  
Angie Wheeler, Environmental Health

# Washington County

## 2008 Community Health Assessment

---

---

### Washington County Description

#### History

Washington County is an area of abundant beauty, historical character, and agricultural heritage located on the eastern edge of the Twin Cities Metropolitan Area. The county has historically played a diverse role in the region, serving the Twin Cities with its commercial, industrial, community, natural, and agricultural resources.

Stillwater, the Washington County seat, is known as "The Birthplace of Minnesota." This suggests the county's historic significance to the state in the formation of the Territory of Minnesota. Many firsts occurred in the county, including the first farm, courthouse, sawmill, gristmill, school, church, and prison to be located in present-day Minnesota. The county was one of the first areas of the state settled by people from the eastern United States and from Europe, particularly Scandinavians. Many of the first permanent settlements after the 1837 treaties with native populations were along the rivers of what would become Washington County. Originally part of the St. Croix County of Wisconsin Territory, Washington County was organized shortly after the formation of Minnesota Territory in 1849.

The first commercial sawmill was established in Marine in 1839. Shortly thereafter, a sawmill was located in present-day Stillwater located on the banks of the St Croix River, which became a booming lumber town by the 1850s. Cut timber was shipped via the Mississippi River to St. Louis and other southern markets. Throughout its lumber and saw-milling days, Stillwater was a raucous town that swelled with lumberjacks every summer. After the turn of the century, much of the northern forests were felled and sawmilling declined, as did the area's economy. The population of Stillwater and Washington County plummeted, and agriculture gained importance and became the economic mainstay of the county.

Scenic beauty, historic significance, recreational amenities, and proximity to the growing Twin Cities area have made Washington County a popular recreation and tourism destination. These qualities also explain the county's continued popularity for residential development. As early as 1900, the beauty and proximity of the St. Croix Valley to St. Paul made it a popular location for both summer and year round homes.

#### Geography and Location

Washington County, which encompasses 423 square miles of land and water surface, is the fourth smallest county in the state based on land area. It is 38 miles from north to south and 14 miles from east to west. Elevations in the county range from 675 feet at Lake St. Croix to over 1,100 feet in Section 17 in Woodbury. The St. Croix River forms the entire eastern border and the Mississippi River forms the southern and southwestern border.

Washington County's physical environment is very diverse. Its surface and underground features vary throughout the county. Important natural features are the Mississippi River, a popular recreational and important commercial waterway; the bluffs and ravines along the St. Croix River; the county's many lakes; and the productive farmland of the southern half of the county.

Very little of Washington County remains as it existed prior to settlement. As a result of farming and development, most of the county's natural vegetation has been altered or replaced with domesticated plants. The few areas that retain their original vegetative characteristics are small and widely scattered. However, several prairie restoration and preservation projects are underway.

# Washington County

## 2008 Community Health Assessment

---

---

Before settlement, as much as 80% of the county was forested. The rest of the county was covered by lakes, wetlands, and some prairie in the southern part. Once the timber was harvested and the land cleared, it was converted to agricultural uses. Nearly all the land suitable for agriculture was developed by the early 1900s.

The northern half of Washington County retains remnants of the forests that once predominated the area. The St. Croix River Valley has the largest existing stands. Of special interest is a stand of remnant white pines being protected as a State Scientific and Natural Area along the St. Croix River north of Marine on St. Croix. The county's woodlands mostly consist of maple-basswood or oak savannah. Stands of birch, pine, and tamarack are scattered around the county. Other important types of vegetation exist in small remnants of native prairie and in a variety of wetlands such as fens, marshes, swamps, and bogs.

Surface waters cover about 10% or about 44 square miles of the county's 423 square miles. The majority of the county's surface waters consist of lakes and wetlands. The county has 186 lakes that are ten acres or larger. Most lakes and wetlands are in the northern half of the County. The largest lakes are Forest Lake, Big Marine Lake, White Bear Lake, and Lake St. Croix. Many of the larger lakes, once resort and vacation spots during the first part of the century, have become magnets for permanent residential development.

Washington County has substantial reserves of high quality groundwater. Due to the geologic conditions of the county, most of these reserves are highly sensitive to contamination. If not protected, they may become unusable as a source of potable water without treatment. The term "sensitivity" is commonly used to describe the general potential for an aquifer to become contaminated. The Minnesota Department of Natural Resources measures relative sensitivity by the travel time required for a contaminant to move vertically from the land surface to an aquifer. Shorter travel time means greater sensitivity.

The fundamental factor to contaminant movement is the geology of an area. Shallow bedrock, high water tables, and rapid infiltration rates all contribute to groundwater sensitivity and are all commonly found in Washington County. The Minnesota Geologic Survey's *Washington County Geologic Atlas* identifies approximately 97 percent of the water table system and approximately 82 percent of the Prairie du Chien-Jordan aquifer as being moderately to very high in susceptibility to pollution. The Anoka Sand Plains in the northwest part of the county and the karst geology in the south are especially vulnerable to contamination. Only in a small area in southern Woodbury and in central Forest Lake Township is the water table system rated low susceptibility to contamination.

### **Population Characteristics**

Washington is a mostly rural residential county on the eastern edge of the Twin Cities metropolitan area. It is bounded on the east by 56 miles of the St. Croix River and on the south and southwest by 26 miles of the Mississippi River. Major roadways include Interstates 494, 694 and 94, and State Highways 61, 36, 95, 96, 97 and 101.

Urban residential development in Washington County has largely occurred on the eastern and western edges, beginning with the settlements of Marine on St. Croix, Afton and Stillwater in the 1840s. The western portion of the county has grown along with the eastern edge of the metropolitan region. The cities of Oakdale and Cottage Grove lead the initial surge in the 1960's and were joined by the growth of Woodbury from the 1970's through 2000. Between 2000 and 2010, the areas experiencing the most rapid growth continue to be Hugo,

# Washington County

## 2008 Community Health Assessment

---

---

Forest Lake, Lake Elmo and Woodbury.

### *Suburban Areas*

Suburban development exists on the western side of Washington County where Municipal Urban Service Area (MUSA) development extends from the small communities around White Bear Lake, through Oakdale, Woodbury and Cottage Grove. Newport and St. Paul Park are older communities along the Mississippi River with heavy industry such as oil refining. This area of Washington County is predominately urban with a mixture of housing types, commercial and industrial activities and major public facilities. Woodbury and Cottage Grove still have large undeveloped areas within the MUSA. Woodbury has been developed in stages from the northwest to the southeast. It has the most extensive commercial retail areas along the I-494/694 and I-94 corridors of these suburbs. Cottage Grove has designated the eastern third of its area for long-term farming and plans staged suburban development around the existing developed areas.

### *Northern Townships and Cities*

The northern communities of Washington County include May Township and the cities of Scandia, Forest Lake, Hugo and Marine on St Croix. The City of Forest Lake lies on the banks of Forest Lake and includes an historic downtown. Hugo and Scandia and May Township are mostly rural and agricultural with scattered locations of non-farm houses. These include both an old town center with a cluster of smaller lots and retail businesses. Hugo has increased suburban residential and commercial development along the Highway 61 corridor with the expansion of its MUSA. Marine on St. Croix is an historic St. Croix River city with a commercial core that has retained its intimacy and small-town charm. These northern communities have the greatest number of lakes in the county.

### *Central Townships and Cities*

The central communities, including West Lakeland, Stillwater and Baytown townships and the cities of Grant and Lake Elmo, have the greatest number of non-farm, large-lot residential housing. Parcels in Stillwater Township and Grant are in the ten-acre and five-acre range, compared with the typical 2.5-acre lots in Lake Elmo, West Lakeland and Baytown Townships. These communities, with the exception of West Lakeland Township, encourage and allow open space developments with the goal of preserving open space. The rural townships and cities have very little commercial or industrial development.

The City of Stillwater is a popular retail and tourist attraction, capitalizing on its well-preserved turn of the century architecture and magnificent natural features. Stillwater, Oak Park Heights and Bayport, due to their historical development, have developed at urban and suburban densities. Contemporary commercial and light industrial activity stretch along the Highway 36 corridor. The cities of Oak Park Heights and Bayport have a mixture of housing, business and industrial activities.

### *Southern Townships and Cities*

The southern communities consist of the City of Afton, Denmark Township and Grey Cloud Island Township. These are the most rural portions of the county and have a relatively low density of non-farm housing, particularly Denmark Township. The richest farmland in the county is in western Denmark Township, Afton and eastern Cottage Grove. Afton has an historic town center with small retail businesses and a marina along the St. Croix River.

# Washington County

## 2008 Community Health Assessment

---

---

Along the St. Croix River are four small communities which are highly oriented toward the water: Lakeland, Lakeland Shores, Lake St. Croix Beach and St. Mary's Point. These cities consist almost entirely of single-family housing on small lots, but there are also small commercial areas serving the local market.

In the southwestern corner of the county is Grey Cloud Island Township. The township has large-lot housing, one major rock quarry, and farm fields.

### **Parks and Recreation**

Washington County is endowed with natural resources that are aesthetically attractive and diverse. The county is fortunate to have high quality lakes, woodlands, agricultural areas, watersheds, wetlands, and two nationally significant river valleys. These natural resources and features are also remarkably intact compared with those in other metropolitan counties. However, this is rapidly changing due to development. Parks provide an opportunity to preserve portions of the county's many natural systems, including groundwater, wildlife habitats, and vegetative and landscape types.

The St. Croix River flows through some of the most scenic and least developed country in the Upper Midwest. The St. Croix National Scenic Riverway was established in 1968 as one of the original eight rivers under the National Wild and Scenic Rivers Act and is managed by the National Park Service. The Lower St. Croix National Scenic Riverway was added to the system in 1972 and is cooperatively managed by the Minnesota and Wisconsin Departments of Natural Resources (DNR). The State of Minnesota DNR also manages Afton and William O'Brien State Parks, along the St. Croix River, the Gateway Trail (part of the Willard Munger State Trail), and state historic sites. These resources are designed for a broader clientele than county residents and have state, national and international visitors.

Washington County Parks consist of six regional parks, one county park and one regional trail. These locations total 4,312 acres. The county and regional parks include: Big Marine Park Reserve, Cottage Grove Ravine Regional Park, Lake Elmo Park Reserve, Pine Point Regional Park, Point Douglas Park, Square Lake Regional Park and St. Croix Bluffs Regional Park. The Hardwood Creek Regional Trail is a 9.5 mile multiple-use trail in northwestern Washington County. Washington County also has two state parks, William O'Brien and Afton, and also has a portion of the gateway State Trail. Many municipal parks also exist throughout the county.

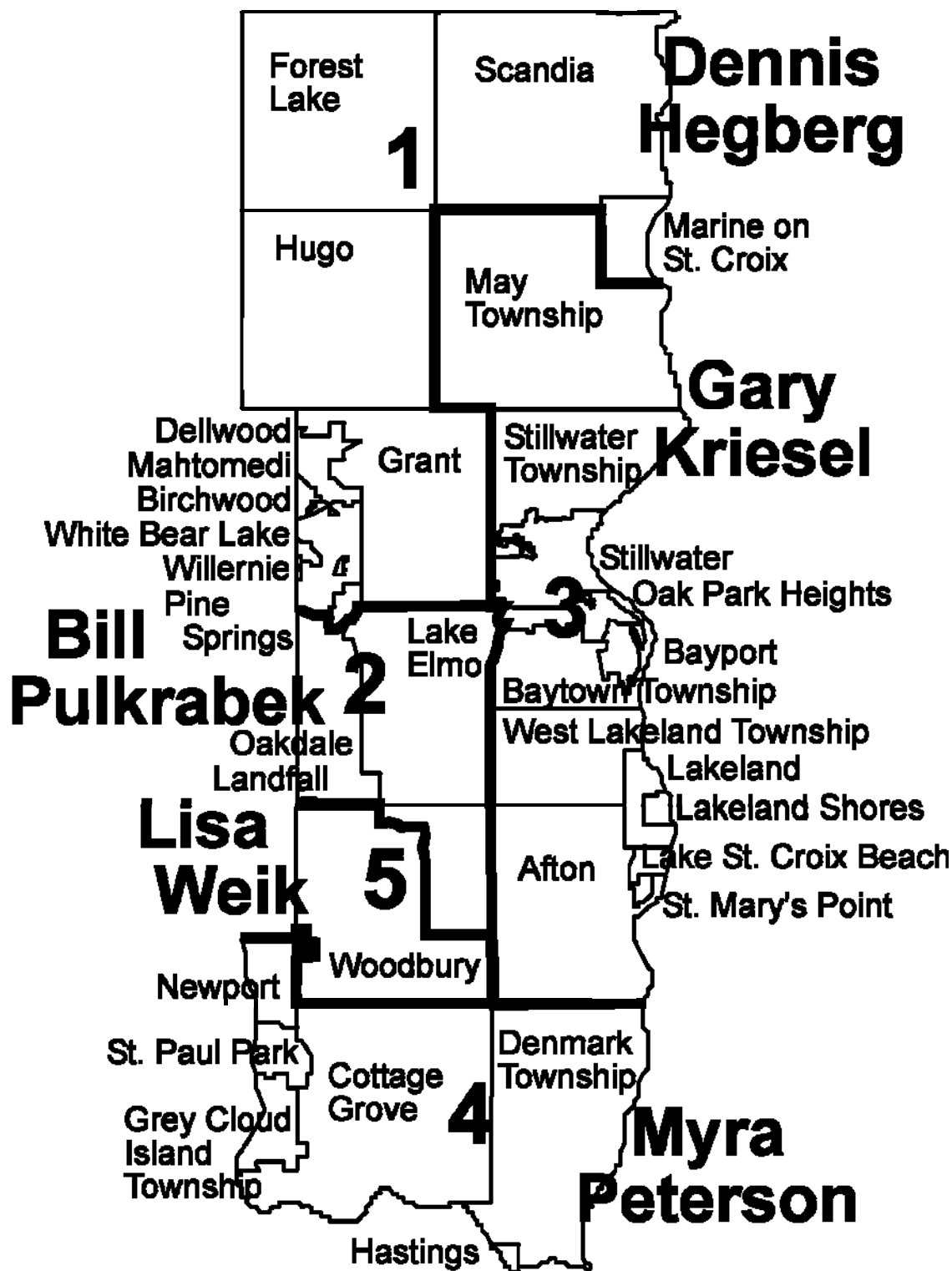
### **Local and County Government System**

In Minnesota, the local governmental system includes townships, cities and counties. The roles of each of these governmental entities are prescribed in Minnesota Statute. There are six townships in Washington County and 26 cities (including portions of White Bear Lake and Hastings). The county is governed by a Board of Commissioners and municipalities by city councils elected by the people to four-year terms. Township boards of supervisors are elected for terms (duration varies by township).

# Washington County 2008 Community Health Assessment

---

The image below depicts the current County Commissioners and their respective districts:



# Washington County

## 2008 Community Health Assessment

---

---

### **Public Safety System**

The residents of Washington County are served by a variety of public safety systems to assure their safety during emergencies and/or disasters. There are sixteen fire departments with a variety of full-time, part-time and paid on-call personnel totaling approximately 500 firefighters. Twelve law enforcement agencies provide varying levels of safety and security activities. There are ten separate ambulance services providing emergency care; there are six police and fire agencies who provide Basic Life Support and two that provide Advanced Life Support. An additional two private agencies also provide Advanced Life Support. Public safety services for all county municipalities are linked by service contract and/or mutual aid agreement.

### **County Strengths and Challenges**

Washington County is one of the most affluent counties in the state which is evident in many economic indicators and social characteristics. Both household income and per capita income exceed state averages. The estimated poverty rates for all ages and for children fall under state poverty rates. Home ownership rates in the county are higher than state and national averages, as are graduation rates. County unemployment rates have historically remained below state and national rates, as well. Refer to County Demographics, pages 17-38 for details.

In addition to economic and social indicators, Washington County exhibits better health outcomes than state averages in many health indicators. The county has lower rates of low birth weight infants, premature births, and lower teen pregnancy/birth rates than the state. The county has higher rates of mothers receiving prenatal care in the first trimester than the state, as well. In relation to mortality indicators, the county had lower rates of cancer and unintentional injury than the state in 2006 but slightly higher rates of heart disease and stroke. Refer to selected health indicators, pages 12-17 for details.

Some of the key challenges facing the county relate to population growth and population trends. Despite the overall affluence of county residents, many are uninsured and many lack affordable housing. The county is gradually becoming more diverse in terms of the race and ethnicity of its population. This trend increases the demand for accessible and culturally appropriate health services.

Population trends also signal the continual aging of the population in the county. Service delivery, including housing development, will need to focus with more clarity on the needs of the 65 and over population. One of the most pressing needs, particularly with elderly, disabled and low income groups, is access to transportation.

Twelve health and environmental problems facing the county that were identified in the 2008 Community Health Assessment are summarized in the following pages. Many of the problems have been a focus of Washington County's Department of Health and Environment for many years and include: substance abuse, mental illness, improper waste management, need for enhanced emergency preparedness, water contamination, chronic diseases, and adolescent and young adult high-risk behavior. Four of the problems have been emerging issues but have yet to be addressed by the department with specific improvement plans. They include limited transportation options, meeting the increasing demand for services from an aging population, limited access to health services for all residents, and rising obesity trends in children and adults.

# Washington County Health & Environmental Indicators

## Maternal-Child Health

<b>Selected Natality Indicators<sup>1</sup></b>	<b>2004</b>	<b>2005</b>	<b>2006</b>
Number of births - County	2,856	2,870	2,960
Birth rate/per 1,000 population			
County	13.2	13.0	13.2
State	13.8	13.8	14.2
Low birth weight (less than 2,500 grams), single births - Percent			
County	4.3	3.5	4.6
State	4.9	4.9	4.9
Premature births (less than 37 weeks gestation), single births - Percent			
County	8.6	8.1	7.6
State	8.4	8.6	8.5
Receiving prenatal care in the first trimester - Percent			
County	91.7	93.4	92.4
State	86.4	86.2	86.5
Cesarean section births - Percent			
County	25	25.1	25.8
State	24.6	25.5	25.5
Births to unmarried women - Percent			
County	20.2	19.6	22.2
State	29.9	29.7	31.7
Number of infant deaths - County	9	15	12

## Causes of Death

<b>Selected Mortality Indicators<sup>1</sup></b>	<b>2004</b>	<b>2005</b>	<b>2006</b>
Number of deaths - County	1,068	1,121	1,063
Crude death rate/per 100,000 population			
County	492.9	508.5	472.4
State	725.6	730.4	715.4
Age-adjusted death rate/per 100,000 population			
County	730.2	748.7	692.0
State	691.0	681.4	671.6
Heart disease - Age adjusted death rate			
County	144.4	146.8	136.6
State	144.3	140.8	133.6
Cancer - Age adjusted death rate			
County	151.1	188.9	168.5
State	176.3	167.5	170.9
Stroke - Age adjusted death rate			
County	54.6	48.6	40.2
State	46.2	41.9	39.3

# Washington County Health & Environmental Indicators

## Leading Causes of Death<sup>3</sup>

	Percent of all county deaths		Percent of all state deaths	
	2002	2006	2002	2006
Cancer	28.0	26.4	23.9	24.5
Heart disease	16.0	18.9	22.3	20.3
Chronic lower respiratory disease	5.6	5.6	5.1	4.8
Stroke	6.1	5.4	7.0	6.0
Unintentional injury	3.9	5.1	5.0	5.2
Diabetes	4.9	3.6	3.4	3.1
Alzheimer's disease	4.4	3.5	3.1	3.5
Suicide	2.1	1.7	1.3	1.5
Nephritis (kidney infection)	2.5	1.7	1.7	1.9
Hypertension	0.8	1.7	1.1	1.3
Other	19.5	21.5	20.1	22.9

## Infectious Disease

### Selected Infectious Disease Indicators (number of new cases in county unless rate indicated)<sup>2</sup>

	2004	2005	2006	2007
Lyme disease	51	74	52	64
Gonorrhea	58	68	52	58
Gonorrhea rate/per 100,000 population				
County	29	33	26	29
State	60	71	67	70
Chlamydia	291	295	315	299
Chlamydia rate/per 100,000 population				
County	144	143	157	149
State	237	251	263	273
Pertussis	41	70	12	14
Giardiasis	24	27	22	25

# Washington County Health & Environmental Indicators

## Injury and Violence

<b>Selected Injury and Violence Indicators</b>		<b>2004</b>	<b>2005</b>	<b>2006</b>
Unintentional death rate/per 100,000 population <sup>3</sup>	County	28.2	22.7	23.7
	State	34.9	35.2	35.1
Death rates from falls/per 100,000 population <sup>3</sup>	County	6.9	5	4.4
	State	10.7	11.4	11.5
Hospitalized fall rate/per 1,000 persons age 65 and over <sup>3</sup>	County	15.8	15.6	14.8
	State	14.7	13.7	12.2
Number of victims per thousand children with determined maltreatment <sup>4</sup>	County	1.7	1.8	3.0
	State	6.0	6.2	5.4
Number of motor vehicle crashes		3,366	3,167	2,757
Motor vehicle death rate/per 100,000 population <sup>3</sup>	County	10.6	8.2	7.0
	State	12.0	11.6	9.4
Alcohol-related motor vehicle deaths - Percent of all motor vehicle deaths <sup>3</sup>	County	38.9	15.8	12.5
	State	31.2	35.2	33.6
Traumatic brain injury rate/per 100,000 population <sup>3</sup>	County	85.6	79.4	92.3
	State	90.9	91.9	86.6

## Mental Health

<b>Selected Mental Health Indicators</b>		<b>2003</b>	<b>2004</b>	<b>2005</b>
Hospital discharges for mental disorders - Number <sup>5</sup>		1,324	1,294	1,327
Hospital discharge rate for mental health disorders/per 1,000 population <sup>5</sup>	County	6.41	6.23	6.31
	State	7.94	8.18	8.16
Self-inflicted injuries receiving emergency room and in-patient hospital care - Number <sup>5</sup>		240	265	235
Self-inflicted non-fatal Injuries receiving emergency room treatment only - Number <sup>5</sup>		102	113	94
Suicide death rate/per 100,000 population <sup>3</sup>	County	7.8	9.5	7.9
	State	10.2	10.6	10.6

# Washington County Health & Environmental Indicators

## Hospitalization

<b>Five Leading Causes of Hospitalization - All Ages<sup>5</sup></b>	<b>Percent of all county hospitalizations</b>		<b>Percent of all state hospitalizations</b>	
	<b>2004</b>	<b>2007</b>	<b>2004</b>	<b>2007</b>
Diseases of the circulatory system	22.56	20.27	23.61	21.44
Complications of the puerperium, pregnancy, and childbirth	7.20	5.99	6.28	6.14
Diseases of the digestive system	9.42	9.82	9.47	9.56
Injury and poisoning	11.24	12.08	11.55	12.21
Diseases of the musculoskeletal system and connective tissue	10.05	11.19	n/a	n/a
All other causes combined	39.53	40.66	41.89	43.40
Diseases of the respiratory system	n/a	n/a	7.20	7.26

n/a=not a leading cause

# Washington County Health & Environmental Indicators

<b>Selected Environmental Health Indicators<sup>6</sup></b>	<b>2003</b>	<b>2004</b>	<b>2005</b>	<b>2006</b>
Percent of water tests positive for coliform bacteria	21.5	16.2	19.7	11.3
Percent of licensed establishments with water tests positive for coliform bacteria	2.1	2.6	3.9	2.0
Percent of water tests with nitrate levels greater than 9.99 mg/l	2.9	3.1	3.4	1.0
Imminent threats to public health and safety identified and abated for subsurface sewage treatment systems	101	77	69	55
Number of valid public health nuisance complaints addressed	40	29	27	30
Percent of homes with radon tests results greater than 4 pCi/L	36.97	44.65	49.75	56.65
Average number of critical violations on routine food inspections	1.4	1.3	1.6	1.4
Primary violations for the past years, 2003-2006:				
◆ hand wash sink not accessible or supplied as required				
◆ improper cold holding temperature for food				
◆ dirty food contact surfaces				
◆ Minnesota certified food manager license not obtained				
◆ sanitizer concentration too low				
	<b>2003</b>	<b>2004</b>	<b>2005</b>	<b>2006</b>
Number of foodborne illness complaints	32	33	30	50
Number of confirmed foodborne illness outbreaks	1	0	2	4
Number of confirmed recreational waterborne outbreaks	0	0	0	0
Number of confirmed drinking waterborne outbreaks	0	0	0	0
Percent of total county municipal solid waste recycled (percent with credits)	51.33	52.80	54.24	53.42
Number of household hazardous waste participants	15,897	16,850	16,491	17,072
Total household hazardous waste (lbs) collected	1,059,970	1,153,149	1,108,097	1,179,842

# Washington County Health & Environmental Indicators

## Sources

<sup>1</sup> Source: Minnesota Department of Health, Vital Statistics Summary, Winter 2008

<sup>2</sup> Source: Minnesota Department of Health, Infectious Disease Epidemiology Prevention and Control, Disease Report Summary

<sup>3</sup> Source: Minnesota Department of Health, Minnesota County Health Tables

<sup>4</sup> Source: Minnesota Department of Human Services, Child Welfare Reports

<sup>5</sup> Source: Minnesota Hospital Association

<sup>6</sup> Source: Washington County Department of Public Health and Environment

## Glossary

Crude death rate: Number of deaths per thousand in a given population during a given time period.

Age-adjusted death rate: Number of deaths per thousand in a given time period, adjusted for differences in age distributions within the population.

# Washington County

## 2008 Community Health Assessment

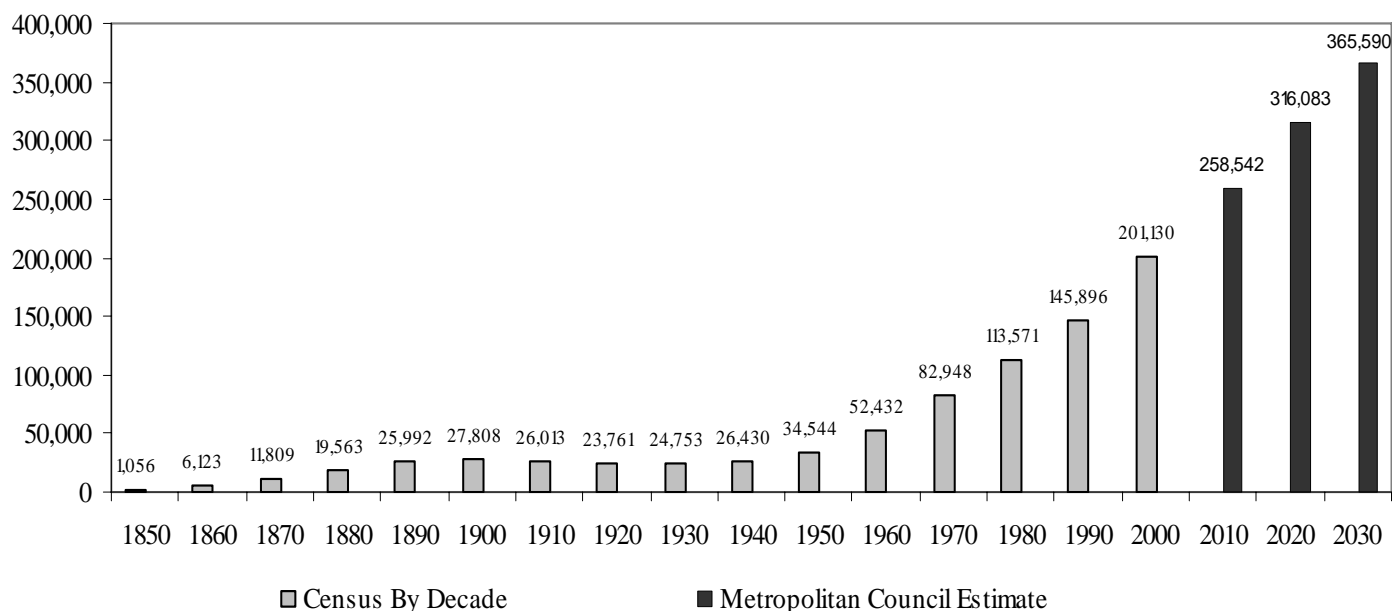
### Demographic Description

#### Population

The current population estimate for Washington County is 233,104 persons for 2007, according to the most recent Metropolitan Council estimates released July 2008. The population forecast is 316,083 for 2020 and 365,590 by 2030. Much of the growth in the county has occurred since 1960, as the county's population increased by over 30,000 each decade to 1990. Another 55,234 were added between 1990-2000. Growth slowed between 2000 and 2006, with an estimated addition of 26,973 people. The population is projected to increase by approximately 41.4% between 2010 and 2030, from 258,542 to 365,590.

Figure 1.

Washington County Population Trends 1850-2030



Source: U.S. Census Bureau for 1850-2000, Metropolitan Council for 2010-2030

#### Population by City

According to the U.S. Census Bureau and the Metropolitan Council, between 1990 and 2000, growth was concentrated in the county's three largest cities of Oakdale, Cottage Grove and Woodbury which contained 42% of total population in 1990 and 52% of the total population in 2000. Between 2000 and 2010, the areas experiencing the most rapid growth are expected to continue to be Hugo, Forest Lake, Lake Elmo and Woodbury. Cities estimated to experience the most rapid rate of growth between 2010 and 2030 are Woodbury, Hugo, Cottage Grove, Lake Elmo, and Forest Lake.

# Washington County 2008 Community Health Assessment

Figure 2. **Washington County Population by City/Township  
Trends and Projections, 1980 – 2030**

Cities	1980	1990	2000	2010	2020	2030
Afton	2,550	2,645	2,839	3,250	3,650	4,050
Bayport	2,932	3,200	3,162	4,600	5,300	6,000
Birchwood	1,059	1,042	968	950	930	930
Cottage Grove	18,994	22,935	30,582	36,000	45,400	53,000
Dellwood	751	887	1,033	1,060	990	970
Forest Lake	9,927	12,523	14,440	21,700	27,800	34,200
Grant	3,083	3,778	4,026	4,400	4,450	4,500
Hastings		5	3	0	0	0
Hugo	3,771	4,417	6,363	19,100	29,000	40,000
Lake Elmo	5,296	5,903	6,863	9,952	18,403	24,000
Lakeland	1,812	2,000	1,917	1,880	1,790	1,760
Lakeland Shores	171	291	355	350	320	320
Lake St. Croix Beach	1,176	1,078	1,140	1,140	1,100	1,080
Landfall	679	685	700	700	700	700
Mahtomedi	3,851	5,633	7,563	8,100	8,000	8,000
Marine on St. Croix	543	602	602	760	880	1,000
Newport	3,323	3,720	3,715	3,800	4,400	4,890
Oakdale	12,123	18,374	26,653	28,000	28,400	30,000
Oak Park Heights	2,591	3,486	3,777	5,500	5,400	5,700
Pine Springs	267	436	421	400	380	360
St. Mary's Point	348	339	344	370	350	340
St. Paul Park	4,864	4,965	5,070	7,650	9,700	10,400
Scandia	2,858	3,197	3,692	4,370	5,000	5,400
Stillwater	12,290	13,882	15,323	19,100	21,300	19,900
White Bear Lake		336	351	400	450	450
Willernie	654	584	549	590	590	590
Woodbury	10,297	20,075	46,463	60,000	73,500	84,000
<b>Subtotal</b>	<b>106,210</b>	<b>137,018</b>	<b>188,914</b>	<b>244,122</b>	<b>298,183</b>	<b>342,540</b>
Townships	1980	1990	2000	2010	2020	2030
Baytown	851	939	1,533	1,820	1,960	2,160
Denmark	1,140	1,172	1,348	1,750	2,150	2,550
Grey Cloud Island	351	414	307	1,100	3,300	6,800
May	2,076	2,535	2,928	3,200	3,600	4,000
Stillwater	1,599	2,066	2,553	2,690	2,940	3,350
West Lakeland	1,318	1,736	3,547	3,860	3,950	4,190
<b>Subtotal</b>	<b>7,335</b>	<b>8,862</b>	<b>12,216</b>	<b>14,420</b>	<b>17,900</b>	<b>23,050</b>
<b>County Total</b>	<b>113,545</b>	<b>145,880</b>	<b>201,130</b>	<b>258,542</b>	<b>316,083</b>	<b>365,590</b>

Source: U.S. Census Bureau and Metropolitan Council Regional Development Framework, Revised Forecasts, January 3, 2007

# Washington County

## 2008 Community Health Assessment

### Population and Households by City

The three largest cities of Woodbury, Cottage Grove and Oakdale combined comprise over 50% of the population and household estimates for the county, with Woodbury estimated to have about one fourth of the population and households in 2007.

Figure 3.

Washington County				
Population and Households, 2000 Census and 2007 Estimates				
City or Township	Population		Households	
	2000 Census	04/01/07 Estimate	2000 Census	04/01/07 Estimate
Afton	2,839	2,937	996	1,053
Bayport	3,162	3,273	763	802
Baytown Twp.	1,533	1,774	492	571
Birchwood Village	968	939	357	356
Cottage Grove	30,582	33,788	9,932	11,342
Dellwood	1,033	1,115	353	385
Denmark Twp.	1,348	1,735	481	606
Forest Lake	14,440	17,494	5,433	6,806
Grant	4,026	4,244	1,374	1,486
Grey Cloud Island Twp.	307	373	117	137
Hastings (partially in County)	3	3	2	1
Hugo	6,363	12,022	2,125	4,301
Lake Elmo	6,863	8,182	2,347	2,787
Lakeland	1,917	1,905	691	696
Lakeland Shores	355	363	116	122
Lake St. Croix Beach	1,140	1,177	462	484
Landfall	700	711	292	301
Mahtomedi	7,563	8,005	2,503	2,788
Marine on St. Croix	602	703	254	296
May Twp.	2,928	3,269	1,007	1,129
Newport	3,715	3,534	1,418	1,372
Oakdale	26,653	27,518	10,243	11,002
Oak Park Heights	3,777	4,751	1,528	2,038
Pine Springs	421	384	140	138
St. Marys Point	344	405	132	154
St. Paul Park	5,070	5,344	1,829	2,013
Scandia	3,692	4,210	1,294	1,490
Stillwater	15,323	18,112	5,797	7,074
Stillwater Twp.	2,553	2,625	833	874
West Lakeland Twp.	3,547	3,934	1,101	1,245
White Bear Lake	351	430	149	206
Willernie	549	566	225	227
Woodbury	46,463	57,279	16,676	21,350
<b>Washington County Total</b>	<b>201,130</b>	<b>233,104</b>	<b>71,462</b>	<b>85,632</b>

Source: U.S. Census Bureau, Metropolitan Council estimates.

# Washington County 2008 Community Health Assessment

## Household Types

In 2000, 77% of the county's households were families, compared with 67% for the metro area. The difference is primarily the result of a high number of new families moving into the county, compared to younger singles. "Other Family" includes single parents and unmarried couples with children.

Based on the 2000 Census count of 71,462 households, the breakdown of household types includes:

Figure 4.

Location	Non-Family		Family		
	Living Alone	Other (roommates)	Married w/ children	Married w/o children	Other Family
Washington County	18.7%	4.8%	34.0%	30.8%	11.7%
Metro Area	25.4%	7.9%	27.3%	26.6%	12.8%

Source: U.S. Census Bureau, Maxfield Research, Inc.-Comprehensive Housing Needs Assessment for Washington County, 2007, Percent of all households is shown above.

## Population by Age

Figure 5 shows the age distribution in the county in 1990 and 2000, as well as estimates for 2010 and 2020. Key trends related to population by age forecasts include:

- ◆ The greatest growth in the county from 2007 to 2020 will be in the 55 to 74 age range, as this population group is expected to nearly double during that period.
- ◆ The 25 to 44 age range will also experience steady growth, from approximately 69,000 people in 2007 to over 85,000 people in 2020, a 23% growth rate in 13 years.

## Population Age Distribution Washington County, 1990-2020

Figure 5.

Age Group	Population					Percent change.....			
	1990	2000	2007	2010	2020	1990-2007		2007-2020	
						No.	Pct.	No.	Pct.
17 & under	44,315	59,225	63,850	65,855	79,655	19,535	44.1%	15,805	24.8%
18-24	11,771	13,726	15,675	16,520	21,005	3,904	33.2%	5,330	34.0%
25-34	26,867	27,341	30,900	32,440	40,435	4,033	15.0%	9,535	30.9%
35-44	26,795	38,877	38,160	37,870	44,630	11,365	42.4%	6,470	17.0%
45-54	16,952	30,210	38,370	41,750	48,345	21,418	126.3%	9,975	26.0%
55-64	9,703	16,484	26,300	30,510	43,245	16,597	171.1%	16,945	64.4%
65-74	5,626	8,830	13,475	15,480	25,205	7,849	139.5%	11,730	87.1%
75+	3,867	6,437	8,660	9,585	14,740	4,793	123.9%	6,080	70.2%
Total	145,896	201,130	235,390	250,010	317,260	89,494	61.3%	81,870	34.8%

Source: U.S. Census Bureau for 1990 and 2000. Estimates from Minnesota Demographic Center, Claritas, Inc., and Maxfield Research-Comprehensive Housing Needs Assessment for Washington County 2007.

# Washington County

## 2008 Community Health Assessment

---

---

### Median Age

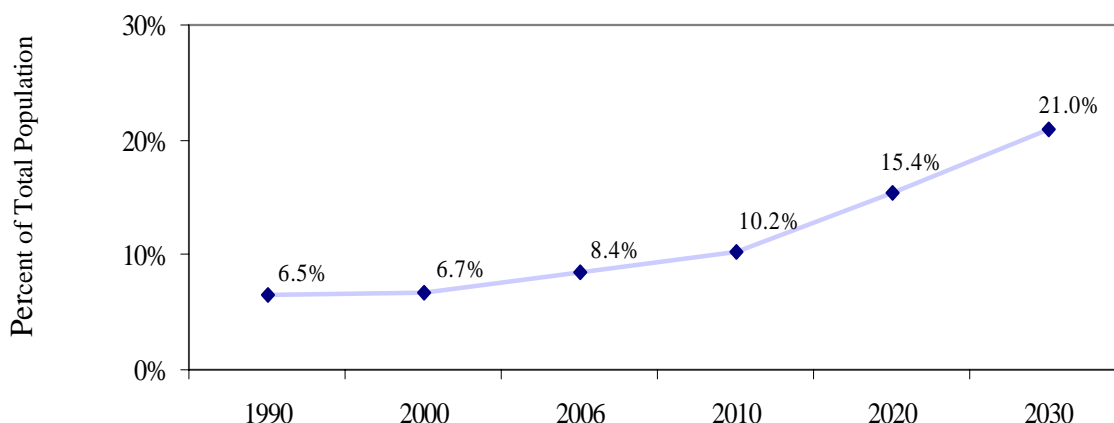
The median age for both genders in Washington County increased from 27.4 years in 1990 to an estimated 36.5 years in 2006.

### Population Ages 65 and Over

Population forecasts indicate that the percent of the population age 65 and over will more than double over the next 20 years. When combined with the general increase in population, the number of people age 65 and over is predicted to increase from about 25,000 in 2010 to over 60,000 in 2030. As shown in Figure 6, approximately 1 in 5 individuals in the county will be age 65 and over in 2030.

Figure 6.

**Percent of Population Age 65 & Over, Washington County**



Source: U.S. Census Bureau for 1990 & 2000. U.S. Census population estimates for 2006. Minnesota State Demographic Center projections for 2010-2030

### **Veterans Population**

The veteran's population in Washington County was estimated to be 16,459 in 2007.

Source: Veteran's Affairs Office, Washington County Community Services

# Washington County

## 2008 Community Health Assessment

---

---

### **Population with Disabilities**

The 2000 Census reported the estimated number of non-institutionalized persons in the county with disabilities to be 8.8% of the population (17,699 persons in 2000), compared with the state average of 12.4%. A disability is defined as a physical, mental or emotional condition lasting six months or more. Three types of disability are included: sensory (blindness, deafness or a severe vision or hearing impairment); physical (a condition that limits one or more basic physical activities); and mental (difficulty learning, remembering or concentrating).

Disability by age group is estimated to be 5% of the population age 5 to 15, 7% of the population age 16-64, and 35% of the population age 64 and over.

Source: U.S Census Bureau – 2000 Census, Maxfield Research, Inc. - Comprehensive Housing Needs Assessment for Washington County 2007

### **Population by Race**

According to the 2000 Census and the 2006 American Community Survey conducted by the U.S. Census Bureau, the percent of the population in Washington County reporting they were *not* of one race and white increased from 6.4% in 2000 to 9.3% in 2006. Between the year 2000 and 2007, the following changes occurred within the county: Hispanic or Latino (of any race) population increased from 1.9% of the population to 2.7%; Black or African American population (reporting they were of 1 race) increased from 1.8% to 3.0% of the population; Asian population (of 1 race) increased from 2.1% to 4.5% of the population; those reporting “Other race” increased from 0.6% to 1.6% of the population; Native Hawaiian and other Pacific Islander remained below 0% of the population; and American Indian and Alaska Native decreased from 0.4% to 0.3% of the population. See Figure 7 for additional population estimates by race for those reporting *race alone or in combination with one or more other races*.

# Washington County

## 2008 Community Health Assessment

Figure 7.

**Washington County Population by Race, 2000 Census and 2006 Estimates**

	<b>2000 Number</b>	<b>2000 Percent</b>	<b>2006 Number</b>	<b>2006 Percent</b>
Total population	201,130		225,000	
<b><u>RACE</u></b>				
One race	198,370		221,437	
White	188,317	93.6%	200,921	90.7%
Black or African American	3,689	1.8%	6,590	3.0%
American Indian and Alaska Native	785	0.4%	712	0.3%
Asian	4,297	2.1%	10,009	4.5%
Native Hawaiian and Other Pacific Islander	66	0.0%	84	0.0%
Other race	1,216	0.6%	3,205	1.6%
Two or more races	2,760		3,563	
		99%		100%
<b><u>Race alone or in combination with one or more other races<sup>1</sup></u></b>				
White	190,777	94.9%	204,338	92.3%
Black or African American	4,601	2.3%	8,269	3.7%
American Indian and Alaska Native	1,585	0.8%	1,606	0.7%
Asian	5,083	2.5%	10,803	4.9%
Native Hawaiian and Other Pacific Islander	172	0.1%	175	0.1%
Other race	1,833	0.9%	3,547	
<b><u>HISPANIC OR LATINO AND RACE</u></b>				
Hispanic or Latino (of any race)	3,892	1.9%	6,014	2.7%
Not Hispanic or Latino	197,238	98.1%	218,986	98.9%

<sup>1</sup>In combination with one or more of the other races listed. The following six numbers may add to more than the total population and the six may add to more than 100% because individuals may report more than one race.

Source: U.S. Census Bureau, Census 2000 and the American Community Survey for 2006.

# Washington County 2008 Community Health Assessment

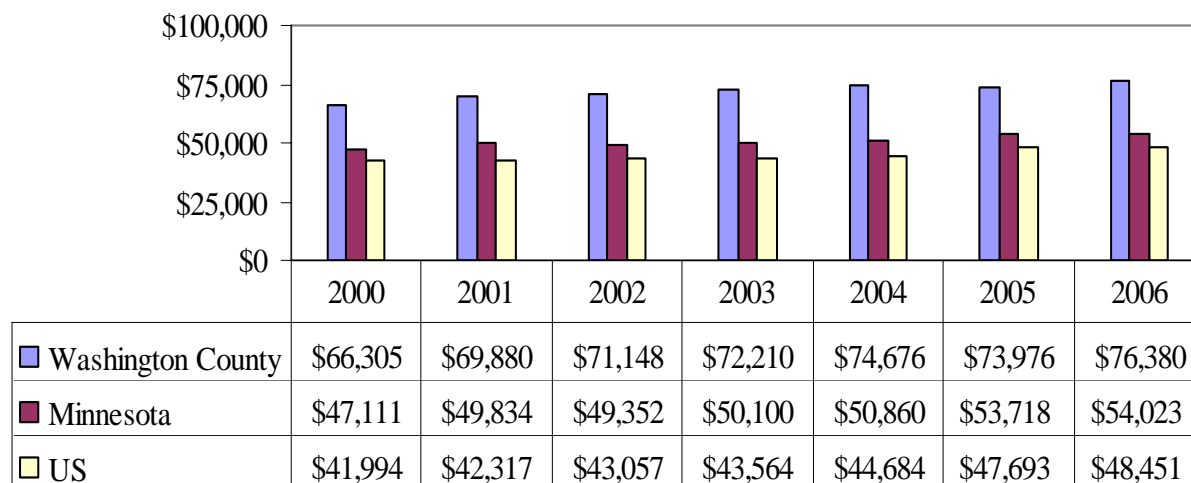
## Income

### *Median Household Income*

Washington County is one of the most affluent in the state due to the dominant influence of rapidly growing second and third ring suburbs made up of professional and managerial households. Median household income in the county increased by 15% from 2000 to 2006, from \$66,305 to \$76,380.

Figure 8.

**Median Household Income, U.S., Minnesota,  
Washington County, 2000-2006**



Source: U.S. Census Bureau, 2000 Census, 2002 Census Supplementary Survey, 2002-2006 American Community Survey, adjusted for inflation.

# Washington County

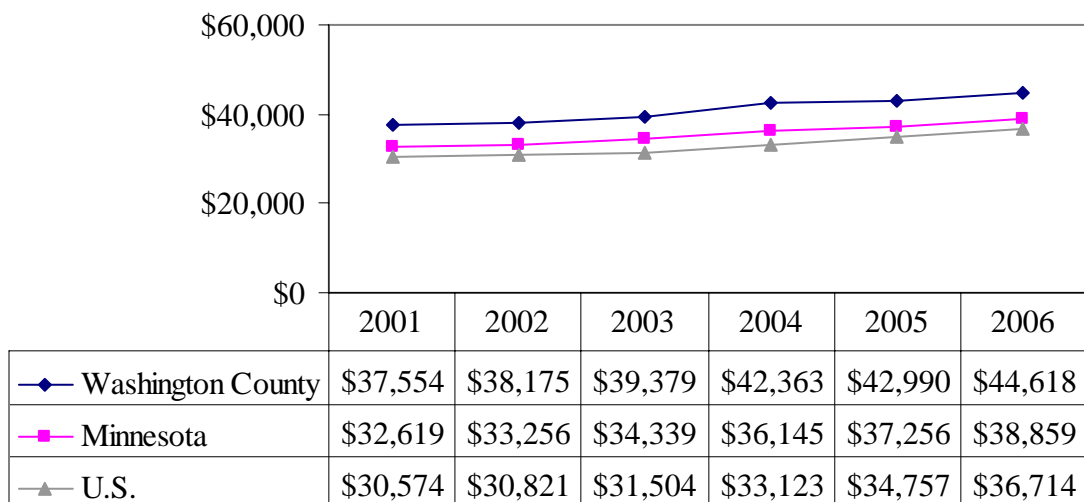
## 2008 Community Health Assessment

### *Per Capita Personal Income*

Washington County had the third highest per capita income in the state in 2006 at \$44,618 behind Hennepin (\$52,905) and Carver (\$47,443) counties. Washington County's per capita income was above the state average of \$38,859 and the U.S. average of \$36,714 in 2006. Per capita income includes earnings, assets (interest, dividends, rent) and transfer payments.

Figure 9.

**Per Capita Income, U.S., Minnesota, Washington County, 2001-2006**



Source: Bureau of Economic Analysis based on Census Bureau mid-year population estimates for 2000-2006 as of April 2008

# Washington County

## 2008 Community Health Assessment

### Labor and Industry

#### *Employment by Industry*

The major industries of employment in Washington County are education and health services, retail, manufacturing and leisure and hospitality, comprising 62.1% of the jobs in 2005.

Figure 10.

Industry	2000			2005		
	Employment		Average Wage	Employment		Average Wage
	Number	Percent		Number	Percent	
Education & Health Services	10,268	15.3%	\$31,616	13,335	18.2%	\$36,088
Retail Trade	11,331	16.9%	\$20,280	11,768	16.0%	\$22,516
Manufacturing	12,003	17.9%	\$50,232	11,168	15.2%	\$58,292
Leisure and Hospitality	8,916	13.3%	\$11,544	9,335	12.7%	\$13,008
Other Services	2,503	3.7%	\$17,628	5,230	7.1%	\$19,600
Financial Activities	4,891	7.3%	\$36,660	4,895	6.7%	\$48,282
Construction	3,682	5.5%	\$40,976	4,923	6.7%	\$46,020
Professional & Business Services	5,623	8.4%	\$47,632	4,277	5.8%	\$54,558
Trade, Transportation & Utilities	3,367	5.0%	\$42,160	3,729	5.1%	\$49,809
Government	3,054	4.6%	\$35,516	3,254	4.4%	\$40,664
Information	662	1.0%	\$24,804	772	1.1%	\$34,424
Natural Resources & Mining	737	1.1%	\$24,336	779	1.1%	\$25,740

Source: Minnesota Department of Employment and Economic Development

#### *Employment*

Major Employers in Washington County:

- Andersen Corporation – Bayport, 4,268 employees
- Independent School District 833 – South Washington County, 2,843 employees
- Independent School District 831 – Forest Lake Area, 1,225 employees
- Washington County Government – 1,158 employees
- Independent School District 834 – Stillwater Area, 1,001 employees
- The Hartford – Woodbury, 1,000 employees
- Minnesota Correctional Facility – Bayport, 538 employees
- Imation Corporation – 397 employees
- Minnesota Correctional Facility – Oak Park Heights, 360 employees

Source: Washington County Department of Administration, Human Resources and Payroll Departments for each respective employer from February 2008, Minnesota Department of Employment and Economic Development

# Washington County

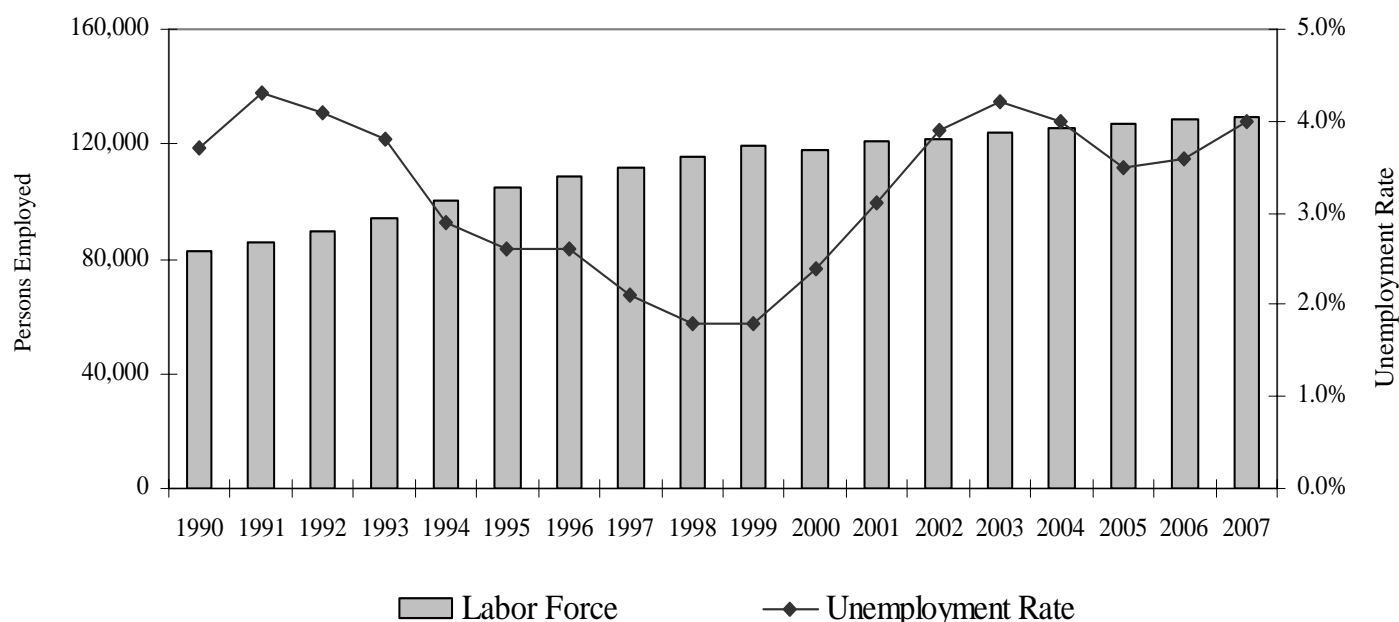
## 2008 Community Health Assessment

### Labor Force and Unemployment Rates, 1990 - 2007

The average annual unemployment rate for Washington County in 2007 was 4.0%. This rate is the same as the 2004 average but up from an average unemployment rate of 3.1% in 2000. The unemployment rate in the county has consistently been less than average annual rates for the state and for the U.S.

Figure 11.

### Washington County Labor Force & Unemployment Rate



Labor Force is the number of people age 16 and over employed who are reside in Washington County.

Source: Minnesota Department of Employment and Economic Development

### Travel to Work

Average commuting time to work for Washington County residents age 16 and over in 2006 was 25.9 minutes. The majority of workers, 84.2%, drove alone to work, 7.6% carpoled, 1.6% used public transportation and 2% used other means. The remaining 4.6% worked at home.

Source: U.S. Census Bureau, 2006 American Community Survey.

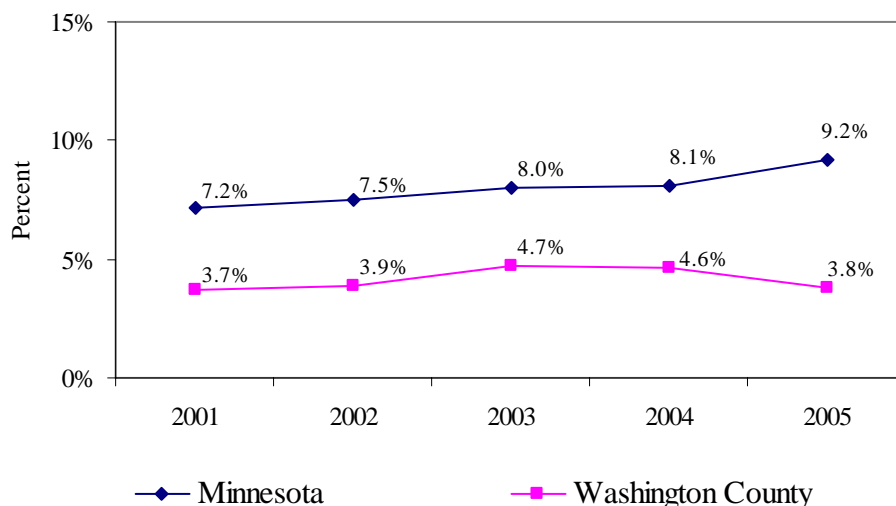
# Washington County 2008 Community Health Assessment

## Poverty

In 2005, the percent of the population in Washington County estimated to be in poverty was 3.8% compared to a state rate of 9.2%.

Figure 12.

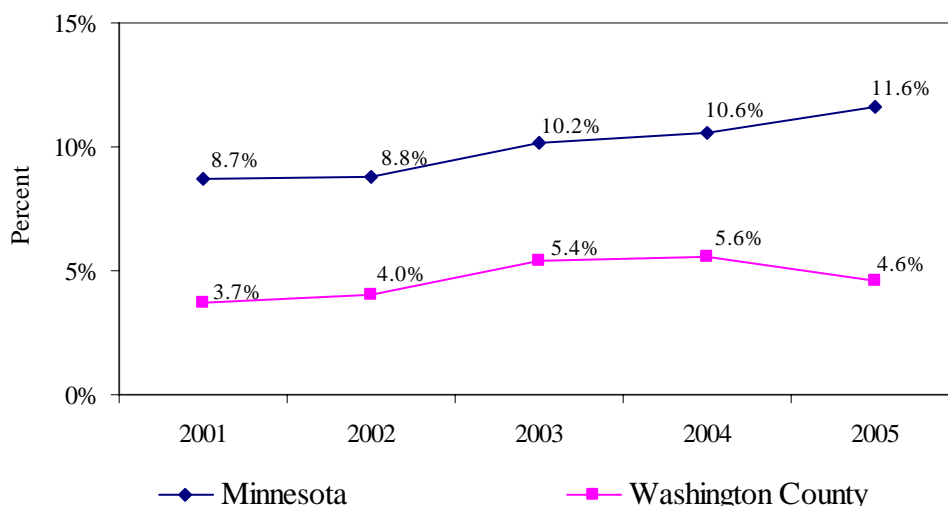
**Poverty, All Ages, Minnesota and Washington County, 2001-2005**



Source: U.S. Census Bureau, Small Area Income and Poverty Estimates. Release date for estimates: January 2008. American Community Survey 2006 for 2006 data

Figure 13.

**Poverty, Ages 0-17, Minnesota and Washington County, 2001-2005**



Source: U.S. Census Bureau, Small Area Income and Poverty Estimates. Release date for estimates: January 2008. American Community Survey 2006 for 2006 data

# Washington County 2008 Community Health Assessment

Figure 14.

**Poverty Rates by City & Township, 1989 and 1999**

City or Township	1989			1999		
	Percent			Percent		
	Individuals	Families	Households	Individuals	Families	Households
Afton	1.10%	1.21%	1.71%	0.64%	0.00%	1.22%
Bayport	6.95%	7.04%	7.11%	3.71%	2.04%	4.06%
Baytown Twp.	1.83%	1.92%	2.59%	1.34%	1.73%	1.76%
Birchwood	3.08%	3.37%	2.61%	2.89%	2.41%	3.06%
Cottage Grove	2.63%	1.81%	2.22%	2.23%	1.83%	1.90%
Dellwood	1.40%	0.96%	1.68%	1.95%	1.64%	1.73%
Denmark Twp.	2.56%	1.55%	3.18%	2.67%	2.68%	3.57%
Forest Lake	6.28%	5.34%	6.91%	4.20%	2.81%	4.48%
Grant	3.02%	2.26%	2.80%	1.76%	1.73%	2.36%
Grey Cloud Twp.	7.09%	8.40%	9.82%	7.21%	0.00%	3.13%
Hastings (part)	0.00%	0.00%	0.00%	0.00%	0.00%	0.00%
Hugo	4.64%	3.15%	5.04%	1.54%	1.37%	2.03%
Lake Elmo	5.07%	4.41%	4.03%	7.33%	4.84%	5.73%
Lake St. Croix Beach	3.23%	1.73%	5.70%	4.01%	1.99%	3.30%
Lakeland	2.95%	2.30%	2.28%	3.05%	2.11%	3.24%
Lakeland Shores	3.09%	3.13%	4.67%	3.89%	1.90%	5.17%
Landfall	14.56%	9.88%	9.76%	19.38%	20.13%	14.79%
Mahtomedi	3.94%	3.28%	4.03%	2.71%	1.56%	2.48%
Marine on St. Croix	2.86%	2.19%	3.59%	2.84%	3.11%	2.06%
May Twp.	2.28%	1.28%	1.48%	2.05%	0.83%	2.38%
New Scandia Twp.	1.55%	1.72%	2.61%	2.34%	1.97%	2.41%
Newport	13.85%	14.93%	13.39%	3.72%	2.44%	3.71%
Oak Park Hgts.	7.94%	5.63%	8.92%	3.36%	2.14%	4.31%
Oakdale	5.80%	4.79%	5.10%	3.56%	2.89%	3.76%
Pine Springs	3.99%	1.16%	5.50%	0.51%	0.00%	0.00%
St. Mary's Point	0.00%	0.00%	0.00%	5.77%	2.94%	5.11%
St. Paul Park	5.21%	4.07%	4.15%	5.53%	5.10%	4.70%
Stillwater	5.68%	5.27%	7.25%	4.31%	2.98%	3.87%
Stillwater Twp.	1.36%	1.03%	1.41%	0.56%	0.53%	0.48%
West Lakeland Twp.	0.29%	0.00%	0.57%	0.99%	0.30%	0.91%
White Bear Lake (part)	1.37%	0.00%	3.37%	1.70%	0.00%	4.22%
Willernie	5.83%	12.12%	8.08%	3.85%	1.29%	4.42%
Woodbury	2.52%	2.01%	2.65%	1.68%	0.80%	1.33%
<b>Washington County Total</b>	<b>4.35%</b>	<b>3.63%</b>	<b>4.57%</b>	<b>3.00%</b>	<b>2.08%</b>	<b>2.90%</b>

Source: U.S. Census, 1990 and US Census, 2000 as compiled by the Metropolitan Council

# Washington County 2008 Community Health Assessment

---

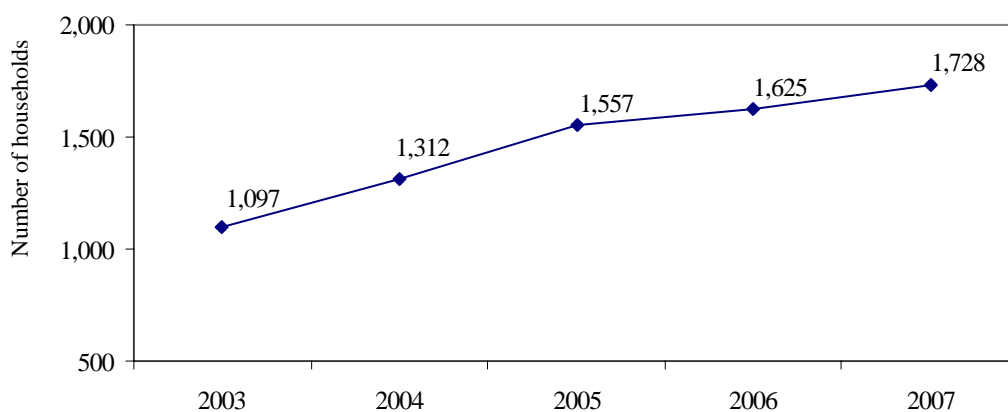
---

## Food Stamp Utilization

The average monthly household use of food stamps in 2006 in Washington County was 1,728 households. There was a 58% increase in average monthly food stamp utilization among households between 2003 and 2007.

Figure 15.

**Average Monthly Number of Households Utilizing Food Stamps,  
Washington County, 2002-2007**



Source: Washington County Department of Community Services

## Housing

### *Housing Unit Types*

According to the American Community Survey conducted by the U.S. Census Bureau, there were 87,000 housing units in Washington County in 2006, consisting of the following types:

- 86% single-family structures
- 12% multi-unit structures
- 2% mobile homes

Approximately 87% of these units (73,000) were owner-occupied, 13% (11,000) were renter occupied and 4% (3,132) were vacant.

The total projected demand for new housing units in Washington County between 2007 and 2030 is 58,260, with 24% being located in Woodbury, 23% in Cottage Grove and 19% in Hugo. The total projected rental demand between 2007 and 2030 is 8,900, with 24% of total rental demand located in Woodbury, 20% in Cottage Grove, and 11% in both Forest Lake and Hugo. Of the total rental units projected, 61% of the demand is expected to be from the senior population. About 12% of total housing demand in Washington County between 2007 and 2030 is expected to be for senior housing which includes both rental and for-sale units.

Source: U.S. Census Bureau - 2006 American Community Survey, Maxfield Research, Inc.-Comprehensive

# Washington County 2008 Community Health Assessment

---

---

## *Housing Costs*

Thirty-six percent of owners with mortgages, 10% of owners without mortgages and 45% of renters spent 30% or more of household income on housing in 2006. The median monthly housing cost for mortgaged owners was \$1,728, for non-mortgaged owners it was \$479 and for renters it was \$926.

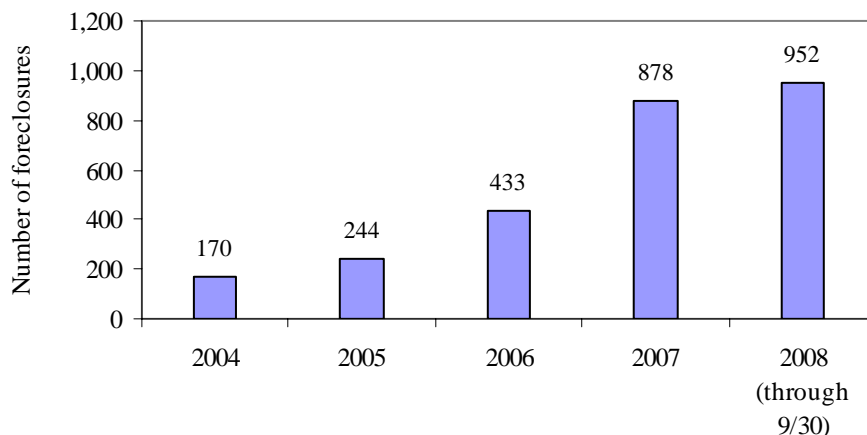
The average residential value of single and multi family units in Washington in 2007 was \$309,600. This is 1.8% above the 2006 market value of \$304,200 and 88.7% higher than the 2000 market value of \$164,100. The average sale price of a single family and multi-family unit in 2007 was \$289,000.

Source: Washington County 2007 Assessment Report, U.S. Census Bureau, 2006 American Community Survey

## *Foreclosure Rate*

The number of annual foreclosures in Washington County have more than quadrupled since 2004. The total number of foreclosures in 2008 as of September 30th (952) have already exceeded the total in 2007 (878). In 2007, Washington County ranked 5th of all counties for the number of foreclosures and ranked 18th for the foreclosure rate (number of foreclosed mortgages as a percent of households).

**Sheriff's Certificates of Foreclosure, Washington County,  
2004 through mid-2008**

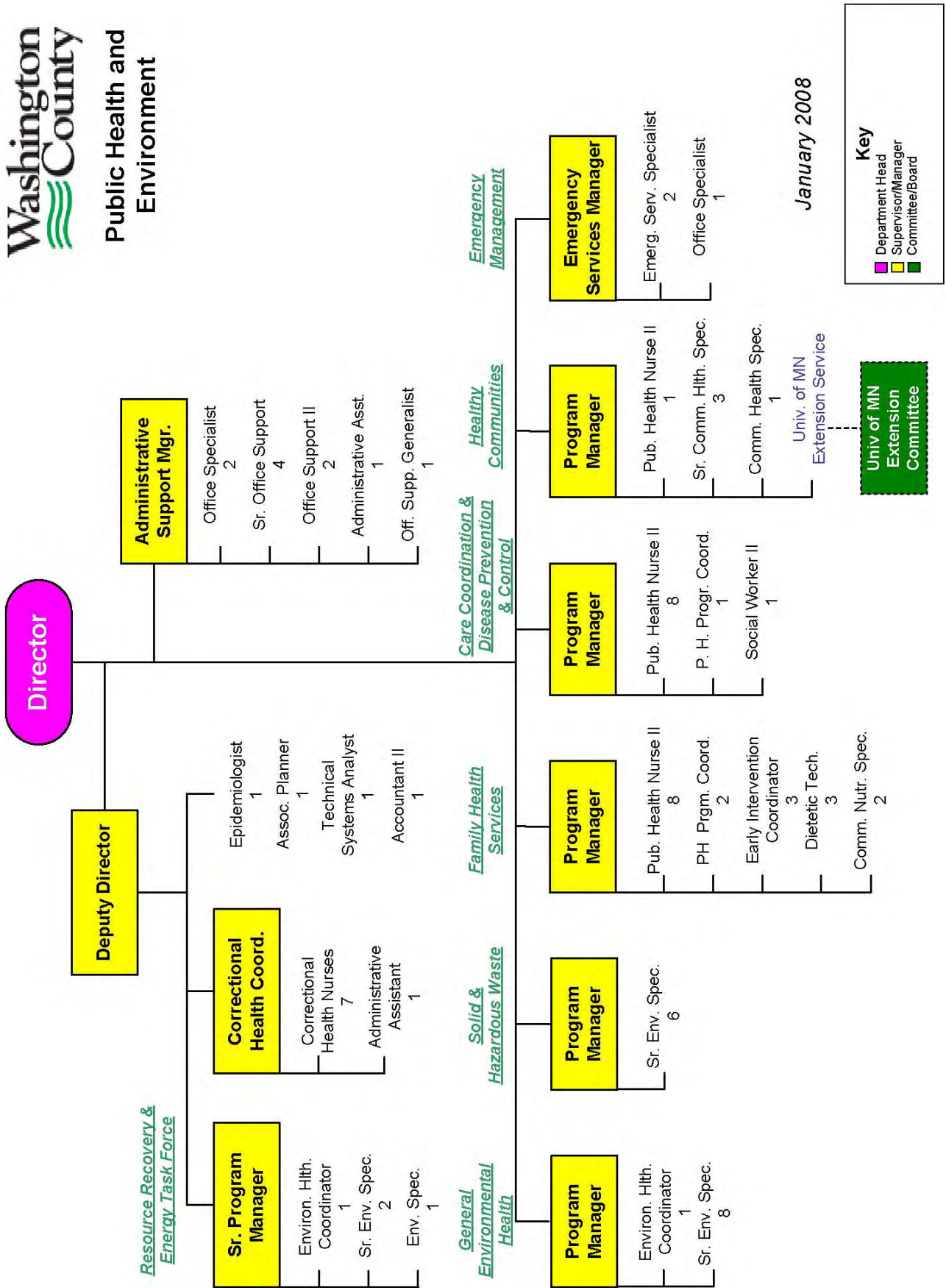


Source: Washington County Department of Property, records & Taxpayer Services

## **Health Care System**

### *County Public Health Department*

The Washington County Department of Public Health and Environment is charged with protecting and promoting the health of county residents. The department provides services which focus on: measuring and reporting changes in health status for all populations; advocating changes in laws, regulations and business practices which affect health; and providing targeted services to citizens where there are identified gaps in communities' abilities to provide services. The department currently employs 84 full-time equivalent individuals who work in the following areas: environmental health, family health, disease prevention and control, emergency management and administration.



January 2008

**Key**

- Department Head
- Supervisor/Manager
- Committee/Board

Intranet Organization Charts\2008\PublicHealth&Environ.vsd

# Washington County

## 2008 Community Health Assessment

---

### *Other Health Care Services*

The major health facilities located in Washington County include two hospitals: Lakeview Hospital in Stillwater and Woodwinds Health Campus in Woodbury. There are sixteen medical clinics, with only one that offers low cost or free health services (St. Croix Family Medical Clinic in Stillwater). Residents also make use of the community clinics located in neighboring counties. There are five nursing homes and eighteen facilities licensed for assisted living. Other nearby hospitals that serve a large number of county residents include Fairview Lakes regional Hospital in Wyoming and St. John’s Hospital in Maplewood.

<i>Hospitals</i>	Number of Beds	Number of Bassinets
HealthEast Woodwinds Hospital - Woodbury	78	20
Lakeview Memorial Hospital - Stillwater	<u>97</u>	<u>15</u>
Total	175	35

### *Clinics*

Primary care clinics within Washington County include:

1. Allina Medical Clinic Cottage Grove
2. Allina Medical Clinic Forest Lake
3. Allina Medical Clinic Woodbury
4. Central Pediatrics Woodbury
5. East Metro Family Practice- Woodlane Clinic
6. Fairview Lakes Hugo Clinic
7. HealthEast Cottage Grove Clinic
8. HealthEast Oakdale Clinic
9. HealthEast Woodbury Clinic
10. HealthPartners Woodbury Clinic
11. Ilko Family Medicine
12. MinnHealth Woodbury Clinic
13. Minute Clinic - Woodbury
14. Pediatric and Young Adult Medicine- Lake Elmo
15. St. Croix Family Medical Clinic\*
16. Stillwater Medical Group

\* Only low-cost provider in the county.

Source: Washington County Department of Public Health & Environment

### *Mental Health Outpatient Service Providers*

1. Family Means - Hudson, Oakdale and Stillwater
2. Lake’s Area Youth Service Bureau - Forest Lake
3. Human Services, Inc. (HSI) - Cottage Grove, Forest Lake, Oakdale, Stillwater
4. Youth Service Bureau, Inc. - Stillwater, Woodbury, Cottage Grove

### *Mental Health Crises Operations*

Washington County Mental Health Emergency Services - Crisis Clinic and Mobile Crises Response

# Washington County 2008 Community Health Assessment

## Nursing Homes

Figure 16.

Facility	Bed Capacity	Patient Days	Occupancy Rate	Total Discharges	Discharge Days	Average Length of Stay (Days)
Birchwood Health Care Center	135	47,529	93.0	345	14,567	42.2
Greeley A Golden Living Center	72	25,112	94.0	202	24,766	122.6
Linden A Golden Living Center	71	24,675	95.2	108	11,689	108.2
Stillwater Good Samaritan Center	121	42,453	96.1	252	37,743	149.8
Woodbury Health Care Center	207	71,925	95.2	398	53,472	134.4
<b>Washington County</b>	<b>606</b>	<b>211,694</b>	<b>94.7</b>	<b>1,305</b>	<b>142,237</b>	<b>109.0</b>
State of Minnesota	35,207	11,751,012	91.4	56,320	11,678,865	207.4

Source: Minnesota Department of Health, Provider Information/Directory, updated 6/25/07

## Assisted Living Services

Based on the Minnesota Department of Health provider health care directory listing in June of 2008, there are 18 licensed Assisted Living facilities in Washington County providing housing with services to residents:

Assisted Living Company, LLC, Crystal Care - Mahtomedi  
 Bangem Home Health - Woodbury  
 Birchwood Arbors – Forest Lake  
 Boutwells Landing – Oak Park Heights  
 Croixdale – Bayport  
 Elder Haven Home, LLC – Forest Lake  
 Hugo Comforts of Home, LLC – Hugo  
 Loving Care Cottage, LLC – Cottage Grove  
 New Perspective Mahtomedi – Mahtomedi  
 Oak Meadows – Oakdale  
 Oak Ridge Place – Oak Park Heights  
 PHS – Cottage Grove, Inc. – Cottage Grove  
 St. Andrews Village – Mahtomedi  
 Stone Crest – Woodbury  
 Triple Angels Healthcare – Cottage Grove  
 Woodbury Estates – Woodbury  
 Woodbury Healthcare Center – Woodbury  
 Woodbury Villa – Woodbury

Source: Minnesota Department of Health, [www.health.state.mn.us/divs/fpc/directory/showprovideroutput.cfm](http://www.health.state.mn.us/divs/fpc/directory/showprovideroutput.cfm)

# Washington County

## 2008 Community Health Assessment

---

---

### *Supervised Living Facilities*

There are currently six facilities that are licensed as Supervised Living Facilities in Washington County. Supervised living facilities typically offer housing with services for individuals diagnosed with chemical dependency and/or mental illness conditions. The facilities in Washington County as of June 2008 include:

- Cedar Ridge – Stillwater, 34 beds
- Phoenix at Newport – Newport, 6 beds
- Rebecca’s Residence – Scandia, 10 beds
- REM MN Community Services, Lake Elmo, 6 beds
- REM MN Community Services, Inc. – Stillwater, 6 beds
- Willow Haven – Lake Elmo, 13 beds

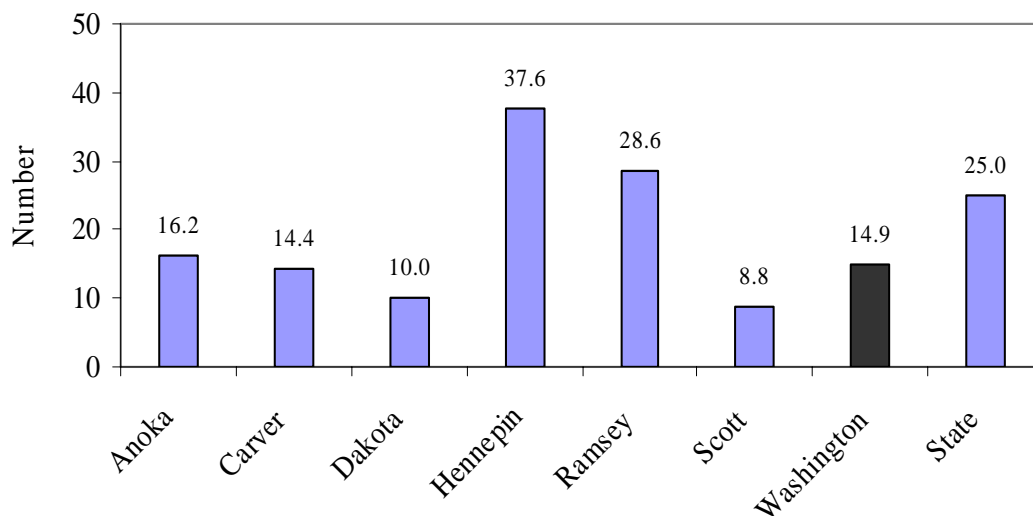
Source: Minnesota Department of Health, [www.health.state.mn.us/divs/fpc/directory/showprovideroutput.cfm](http://www.health.state.mn.us/divs/fpc/directory/showprovideroutput.cfm)

There are also several Class A Professional licensed home care agencies and several class F home care providers in Washington County providing home health care services to the public.

### **Health Care Professionals per 10,000 Persons Working in Washington County**

Figure 17.

*Physicians per 10,000 Population, Metro-Area Counties, 2005*



Source: Minnesota Department of Health, Minnesota County Health Tables, 2006.

# Washington County

## 2008 Community Health Assessment

---

*Number of Registered Nurses per 10,000 population, Metro-Area Counties, 2005*

Anoka	63.9
Carver	16.8
Dakota	13.0
Hennepin	23.4
Ramsey	133.8
Scott	40.5
<b>Washington County</b>	<b>38.4</b>
State	96.1

*Number of Licensed Practical Nurses per 10,000 population, Metro-Area Counties, 2005*

Anoka	15.2
Carver	16.8
Dakota	13.0
Hennepin	23.4
Ramsey	25.6
Scott	16.2
<b>Washington County</b>	<b>12.4</b>
State	31.8

Source: Minnesota Department of Health, Minnesota County Health Tables, 2006.

### *School Nurses*

The number of school nurses in Washington County is estimated to be 30, based on a Department of Public Health and Environment data base as of August 2008.

*Number of Dentists per 10,000 population, Metro Area Counties, 2005:*

Anoka	4.9
Carver	2.9
Dakota	5.7
Hennepin	7.5
Ramsey	6.8
Scott	3.3
<b>Washington County</b>	<b>6.6</b>
State	5.8

Source: Minnesota Department of Health, Minnesota County Health Tables, 2006.

# Washington County 2008 Community Health Assessment

## Education

### *Public Educational System*

Within the County, there are four primary school districts with central services located in Forest Lake, Mahtomedi, Cottage Grove and Stillwater. Enrollment in these districts, as well as in five charter schools and one community school, totaled 37,929 students in the 2007-2008 school year.

Figure 18.

District Number	2007-2008	Number Enrolled
831	Forest Lake	7,202
832	Mahtomedi	3,124
833	South Washington County	16,654
834	Stillwater	8,684
4003	New Heights School, Inc.	124
4043	Math & Science Academy	312
4053	North Lakes Academy	179
4116	Lakes International Language Academy	444
4120	St. Croix Academy	439
6072	Valley Crossing	767
		37,929

Source: Minnesota Department of Education

### *Graduation Rates*

Graduation rates for high schools located in Washington County, 2006-2007 School Year

Figure 19.

High School	Graduation Rate
Mahtomedi High School	98%
Forest Lake High School	95%
Park High School	97%
Stillwater High School	98%
Woodbury High School	99%

Source: Minnesota Department of Education, School Reports

# Washington County

## 2008 Community Health Assessment

---

### *Educational Attainment*

Based on estimates from the U.S. Census Bureau, 94% of Washington County residents age 25 years and over had at least graduated from high school. This includes Washington County students who attend schools outside of the county. Approximately 39% had a bachelor's degree or higher.

### *Free and Reduced Priced Meals*

Figure 20. **Percent of Pre-school Through 12 Grade Students Who Are Eligible to Receive Free or Reduced Priced Meals**

	2002-03	2003-04	2004-05	2005-06	2006-07
<b>Washington County</b>	10.1%	10.2%	11.0%	12.4%	13.1%
<b>Minnesota</b>	28.0%	28.0%	30.0%	30.3%	30.9%

Source: Minnesota Department of Education, U.S. Department of Agriculture

### *Limited English Proficiency*

Figure 21. **Percent of Preschool Through 12th Grade Students With Limited English Proficiency (LEP)**

	2002-03	2003-04	2004-05	2005-06	2006-07
<b>Washington County</b>	0.7%	0.9%	1.2%	1.6%	2.2%
<b>Minnesota</b>	6.1%	6.4%	6.9%	6.9%	7.3%

Source: Minnesota Department of Health, Minnesota County Health Tables

### *Special Education*

Figure 22. **Percent of Preschool Through 12th Grade Students Who Receive Special Education**

	2002-03	2003-04	2004-05	2005-06	2006-07
<b>Washington County</b>	11.3%	12.7%	11.8%	12.7%	13.0%
<b>Minnesota</b>	12.4%	12.8%	12.8%	13.8%	14.0%

Source: Minnesota Department of Health, Vital Statistics Summary

# Washington County

## 2008 Community Health Assessment

---

### *Early Intervention Network*

Children under the age of three who have developmental needs are served by the department's Early Intervention Program (EIN). Parents and caregivers are assisted with services and resources that address developmental issues. Clients are referred to the department, assessed for program eligibility, and offered resource and referral services. The number of clients in the EIN program who received on-going services increased by 60.4% from 2000 to 2007, from 106 to 170 respectively.

Source: Washington County Department of Public Health and Environment

### *Early Childhood Special Education (ECSE)*

Early Childhood Special Education Services (ECSE) are offered by school districts for children if they are eligible under a Developmental Delay or categorical criteria. Disability categories can include: speech/language, physically impaired, deaf/hard of hearing, visually impaired, specific learning disability, autism spectrum disorder, traumatic brain injury, developmental delay, developmental cognitive disability and emotional and behavioral disability, among others.

The number of children ages birth to five served in ECSE by the four primary school districts in the county increased from 405 in 2001 to 434 in 2005.

Figure 23.

<b>Year</b>	<b>District 831 Forest Lake</b>	<b>District 832 Mahtomedi</b>	<b>District 833 South Washington County</b>	<b>District 834 Stillwater</b>	<b>Total Number Enrolled in ECSE</b>
2001	78	31	161	135	405
2002	80	27	150	125	382
2003	101	31	166	121	419
2004	99	25	196	121	441
2005	109	29	170	126	434

Source: Minnesota Department of Education, Early Childhood Special Education District Data Profiles