



**Department of
Property Records and
Taxpayer Services**

**County Board Workshop
on
Taxes Payable in 2008**

March 25, 2008

Contents

<u>What Taxpayers Will See</u>	Summary.....	3
	Graph of parcel counts by range of increase/decrease – All Parcels.....	4
	Graph of parcel counts by range of increase/decrease – Residential Homestead	5
	Graph of parcel counts by range of increase/decrease – County Tax on Res Homestead	6
	Graph of median Residential Homestead tax change by taxing district	7
	Table of parcel counts by range of increase/decrease – Residential Homestead	8-10
	Table of parcel counts by range of increase/decrease – County Tax on Res Homestead	11
	Changes for 2008	12
<u>Levies</u>	Levy Increases by District Type.....	13
<u>Values</u>	Market Value and Tax Capacity 2005–2008, Proposed 2009	14
<u>Tax Rates</u>	Pay 2007 vs. 2008 Metro County Comparison	15
	Table of Pay 2007 vs. 2008 tax rates	16
	Graph of Pay 2008 tax rates for county/municipality/school.....	17
<u>Tax Impacts</u>		
Individual Taxing District Portion	Taxing District portion of Gross Tax	18
	Dollar Change in Individual Taxing District portion of Gross Tax from 2007 to 2008.....	19
	Percentage Change in Individual Taxing District portion of Gross Tax from 2007 to 2008.....	20
Total Tax	Graph of Total Net Tax on a Market Value of 255,000 (county median TMV)	21
	Tax Comparison Chart Pay 2007 vs. 2008 - Total Net Tax.....	22
	Tax Comparison Chart - Individual Taxing District Portion of Net Tax	23
	Distribution of Tax Dollar	24
	Property Tax Refund information.....	25

Taxes Payable in 2008

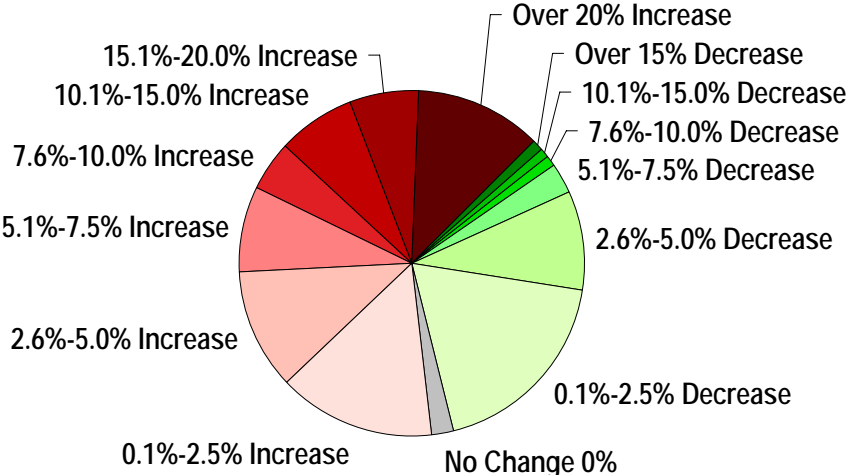
- Property Tax Statements and Valuation Notices are in the process of being printed. 96,112 Tax Statements and 97,277 Valuation Notices will be mailed.
- Tax Statements and Valuation Notices will be available on the county website.
- The total amount billed of **\$329.7 million** is an increase of 7.2% over 2007. The 2007 amount of \$307.5 million was a 9.6% increase over the \$280.6 million billed in 2006.
- The final 2008 amount billed is a \$15.7 million increase over the proposed 2008 amount of \$313.9 million.

What will taxpayers see when they receive their tax statements?

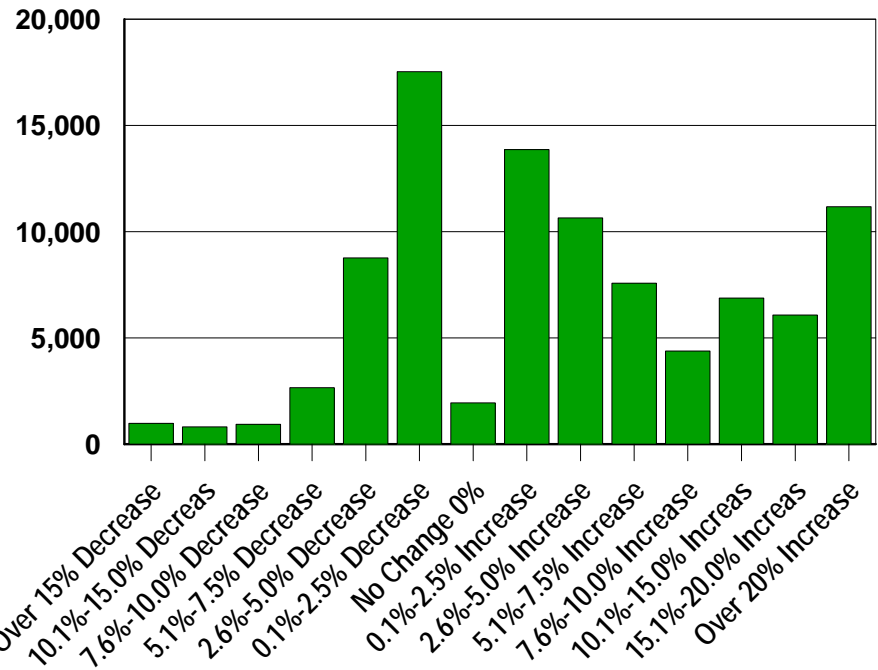
- **All Parcels**
 - Median Value Increase – 0% (varies by municipality)
 - Median Total Tax Increase – 2.5%
- **Residential Homestead Parcels**
 - Median Value Increase – 0% (varies by municipality)
 - Median Total Tax Increase – 1.3%
 - Median County Tax Increase – 1.1%

Pay 2008 Tax Statements Counts by Range of Tax Change

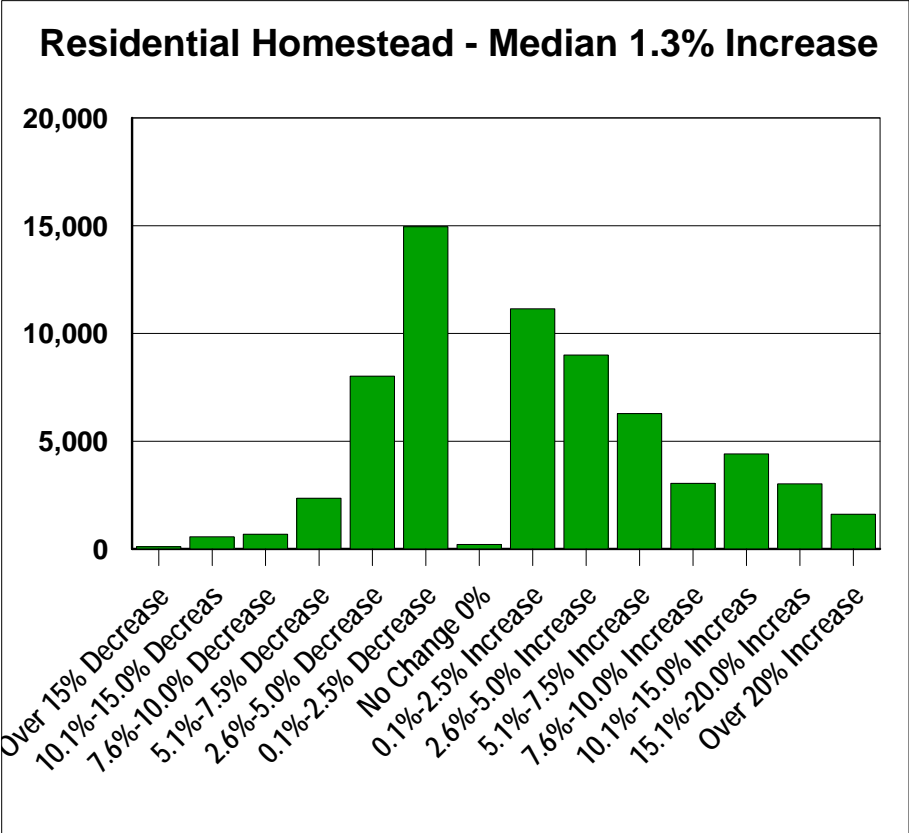
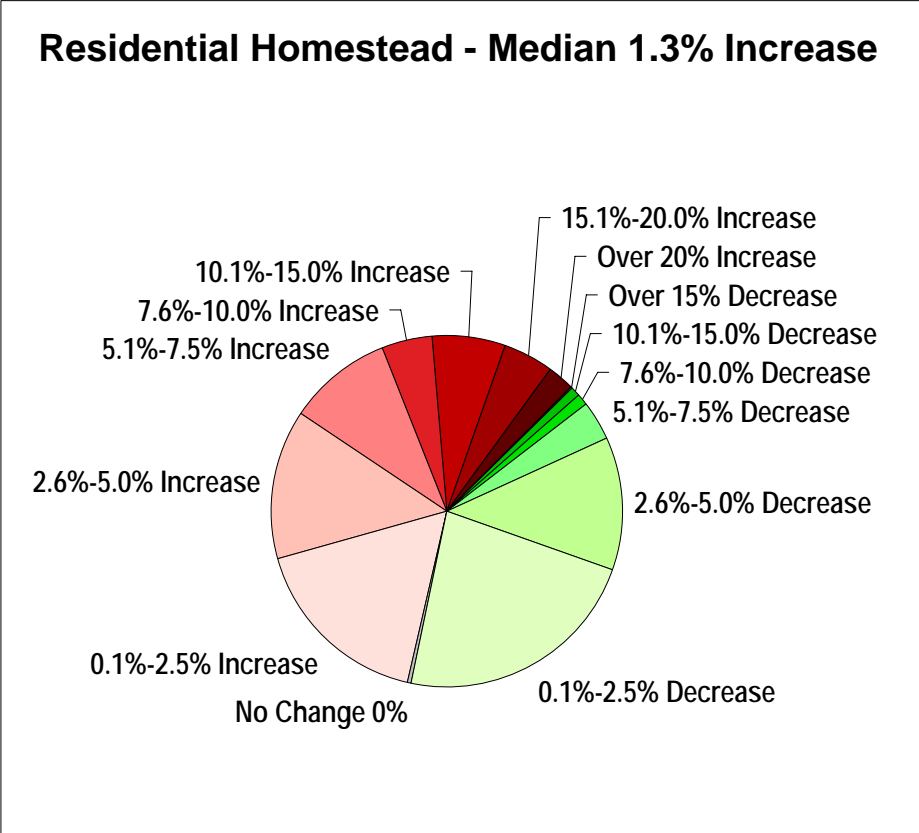
All Parcels - Median 2.5% Increase



All Parcels - Median 2.5% Increase

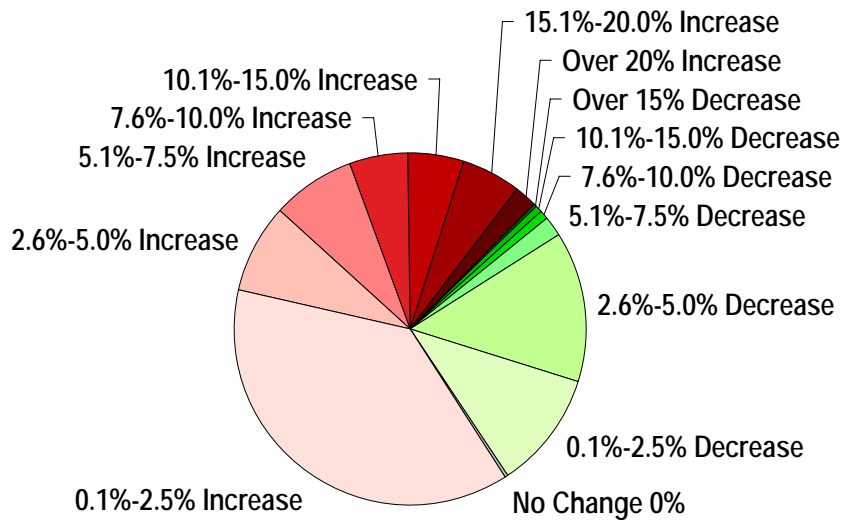


Pay 2008 Tax Statements Counts by Range of Tax Change

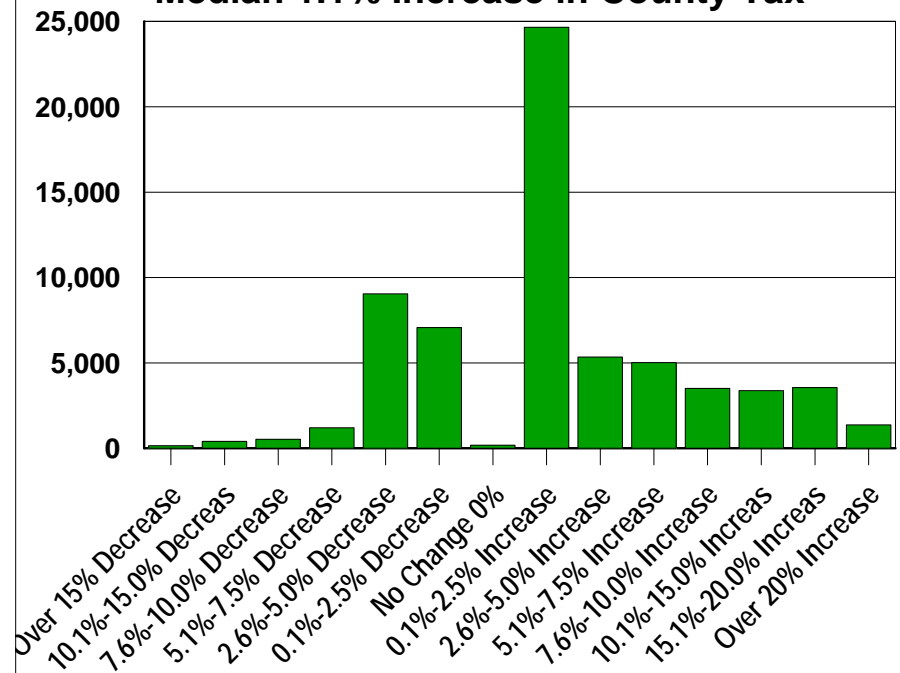


Pay 2008 Tax Statements Counts by Range of Change in County Portion of Tax

**Residential Homestead
Median 1.1% Increase in County Tax**

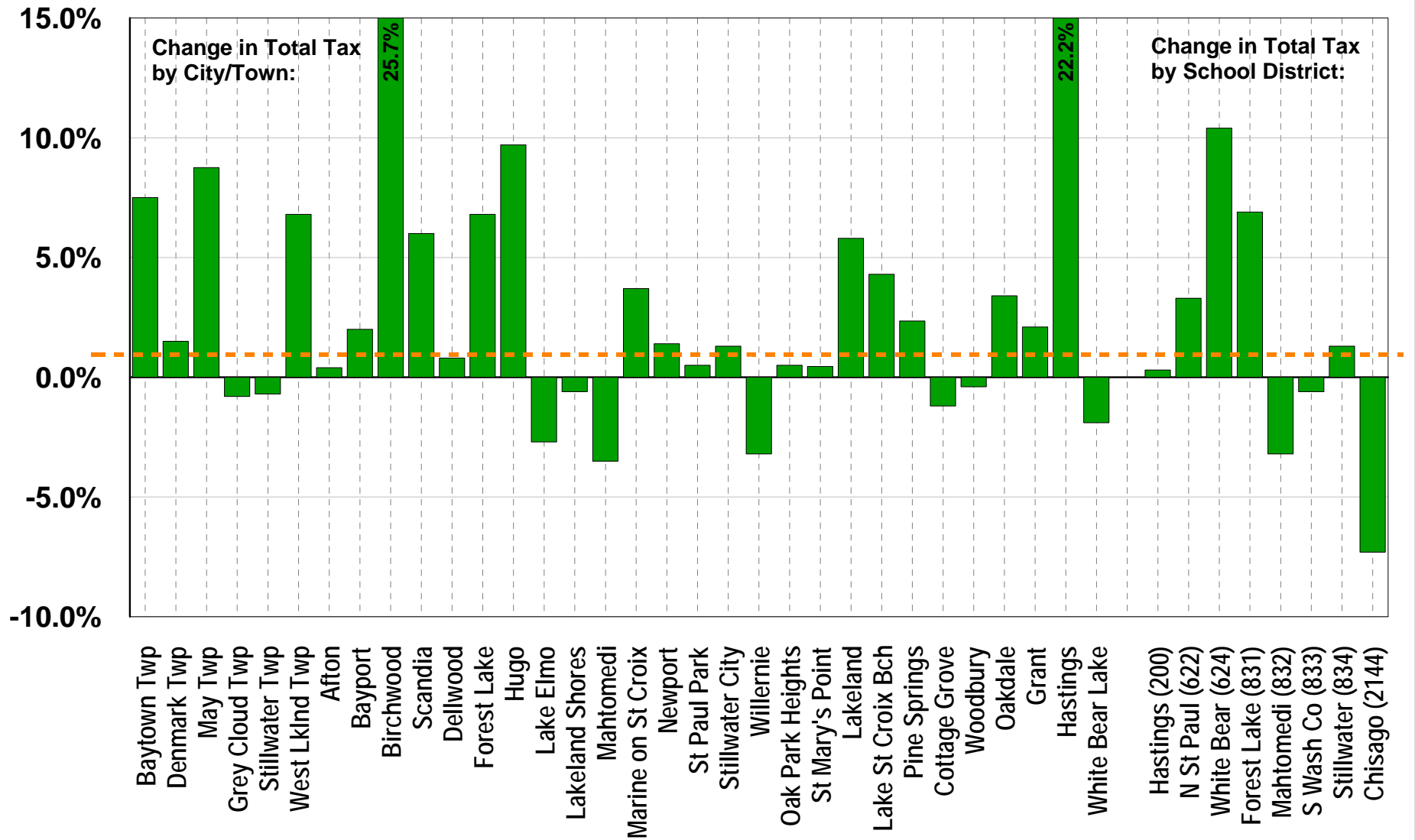


**Residential Homestead
Median 1.1% Increase in County Tax**



Residential Homestead Median Percentage Change in Total Tax

Countywide Median = 1.3%



Counts of Pay 2008 Residential Homestead Tax Statements by Range of Percentage of Increase/Decrease in Total Tax

Taxing District	SD	Median Pay 2008 Taxable Market Value	Median Change in Taxable Market Value	Median \$ Change in Total Tax	Median % Change in Total Tax	Parcel Counts by Range of Tax Increase/Decrease													Total
						Over 15% Decrease	10.1%-15.0% Decrease	7.6%-10.0% Decrease	5.1%-7.5% Decrease	2.6%-5.0% Decrease	0.0%-2.5% Decrease	0.1%-2.5% Increase	2.6%-5.0% Increase	5.1%-7.5% Increase	7.6%-10.0% Increase	10.1%-15.0% Increase	15.1%-20.0% Increase	Over 20% Increase	

By Township/City & School District Combination:

0002	Baytown Twp	834	512,000	6.5%	\$240	7.5%	2	0	0	0	1	5	10	94	130	93	94	50	4	483
0004	Denmark Twp	200			\$44	1.5%	0	1	0	2	13	110	104	67	32	16	26	52	4	427
		833			\$24	0.9%	0	0	0	1	1	2	2	2	0	1	0	0	0	9
		834			\$182	8.0%	0	0	0	0	0	0	0	0	0	1	0	0	0	1
	Total		406,600	1.3%	\$44	1.5%	0	1	0	3	14	112	106	69	32	18	26	52	4	437
0009	May Twp	831			\$260	11.2%	0	3	2	3	0	10	4	11	9	13	26	23	17	121
		834			\$212	8.0%	5	30	29	37	51	45	50	57	44	45	138	93	81	705
	Total		428,800	6.8%	\$231	8.8%	5	33	31	40	51	55	54	68	53	58	164	116	98	826
0011	Grey Cloud Twp	833	287,300	2.0%	(\$20)	-0.8%	4	2	3	7	13	23	8	11	7	7	9	5	0	99
0014	Stillwater Twp	834	430,800	0.0%	(\$20)	-0.7%	1	3	2	11	168	235	70	59	44	28	43	59	2	725
0017	West Lakeland Twp	834	448,700	0.0%	\$170	6.8%	2	0	3	0	1	1	8	411	369	123	123	72	49	1,162
0100	Afton	200			(\$246)	-5.2%	0	0	0	1	0	0	0	0	0	0	0	0	0	1
		833			\$44	1.3%	0	4	2	0	4	4	4	2	4	2	1	6	0	33
		834			\$11	0.4%	3	103	52	86	86	95	71	79	56	47	78	102	8	866
	Total		423,700	0.6%	\$14	0.4%	3	107	54	87	90	99	75	81	60	49	79	108	8	900
0200	Bayport	834	213,300	2.9%	\$34	2.0%	1	1	0	0	10	84	260	117	37	18	17	23	3	571
0300	Birchwood	624	353,900	11.8%	\$591	25.7%	1	0	0	0	0	0	1	3	3	0	16	44	252	320
0400	Scandia	831			\$174	7.0%	0	0	0	0	2	47	94	201	169	155	116	96	91	971
		2144			(\$206)	-7.3%	0	23	55	35	15	17	6	5	2	14	0	0	0	172
	Total		330,400	0.0%	\$152	6.0%	0	23	55	35	17	64	100	206	171	169	116	96	91	1,143
0500	Dellwood	832	585,700	1.5%	\$38	0.8%	1	0	0	0	1	1	276	29	15	6	6	7	0	342
0600	Forest Lake	831	255,500	4.0%	\$129	6.8%	8	11	7	19	29	37	788	510	1,356	357	587	822	392	4,923
0700	Hugo	624			\$168	10.2%	0	2	0	2	2	1	10	165	636	373	991	178	128	2,488
		831			\$159	6.6%	0	0	0	0	0	23	27	69	81	50	36	28	8	322
		832			\$8	0.2%	1	1	0	0	44	45	32	22	19	7	13	3	0	187
		834			\$87	2.4%	0	1	0	0	18	28	34	19	17	15	8	16	2	158
	Total		250,500	0.0%	\$166	9.7%	1	4	0	2	64	97	103	275	753	445	1,048	225	138	3,155
0800	Lake Elmo	622			(\$2)	-0.1%	2	1	0	0	0	267	161	7	1	1	2	0	1	443
		832			(\$111)	-3.3%	0	0	0	0	116	1	0	0	0	0	0	1	0	118
		834			(\$82)	-2.8%	2	4	0	0	1,010	368	21	14	12	3	4	2	0	1,440
	Total		383,700	-3.5%	(\$70)	-2.7%	4	5	0	0	1,126	636	182	21	13	4	6	3	1	2,001
0900	Lakeland Shores	834	336,900	0.3%	(\$12)	-0.6%	0	0	0	0	18	41	9	6	6	5	13	11	1	110
1000	Mahtomedi	832	292,300	-3.6%	(\$91)	-3.5%	1	2	0	1	1,857	72	39	15	12	4	102	114	7	2,226
1100	Marine on St Croix	834	367,300	-2.9%	\$119	3.7%	4	16	8	10	25	29	24	29	13	16	29	14	43	260

