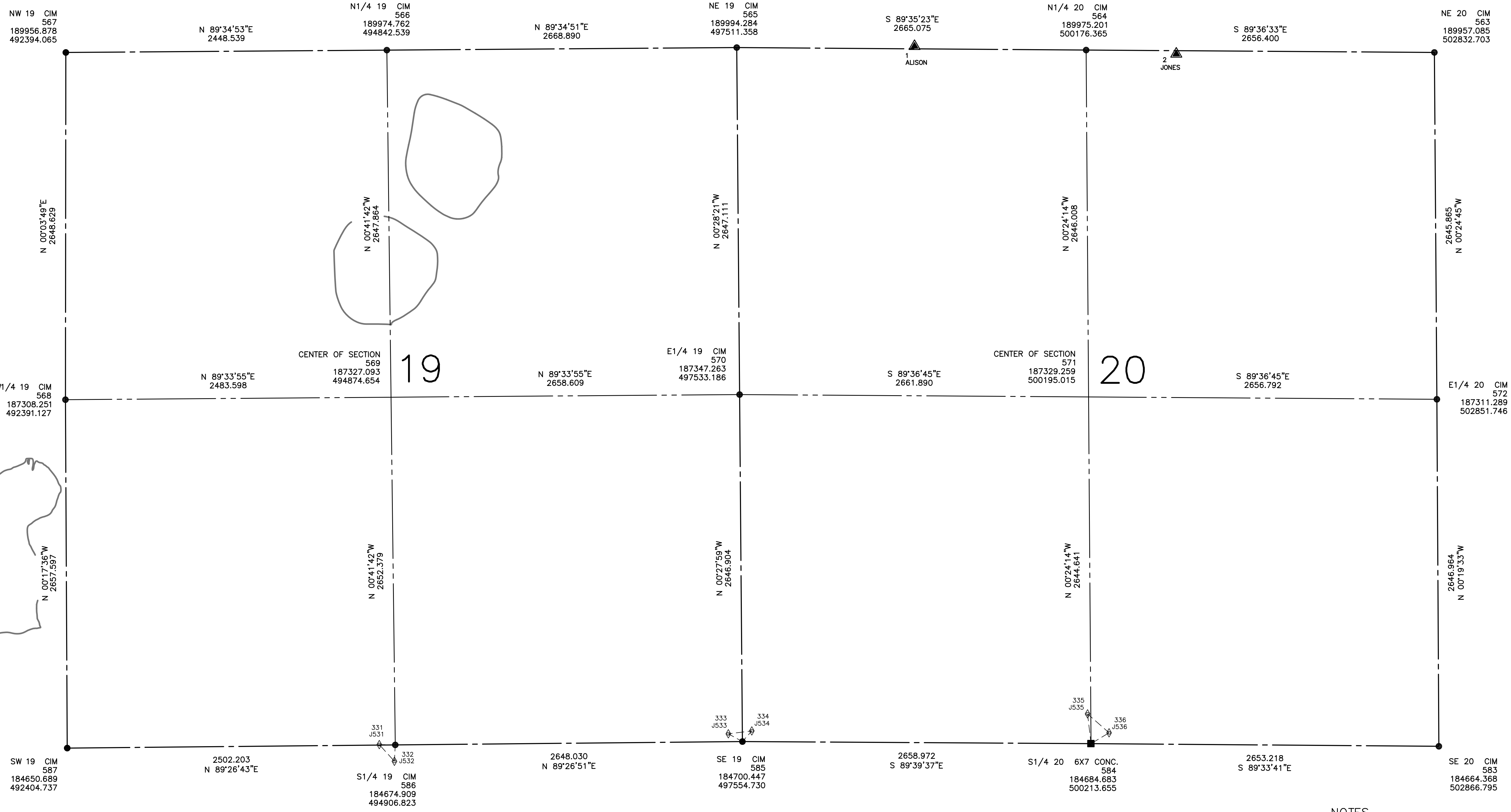


# SECTIONS 19 and 20, T. 29 N., R. 20 W.

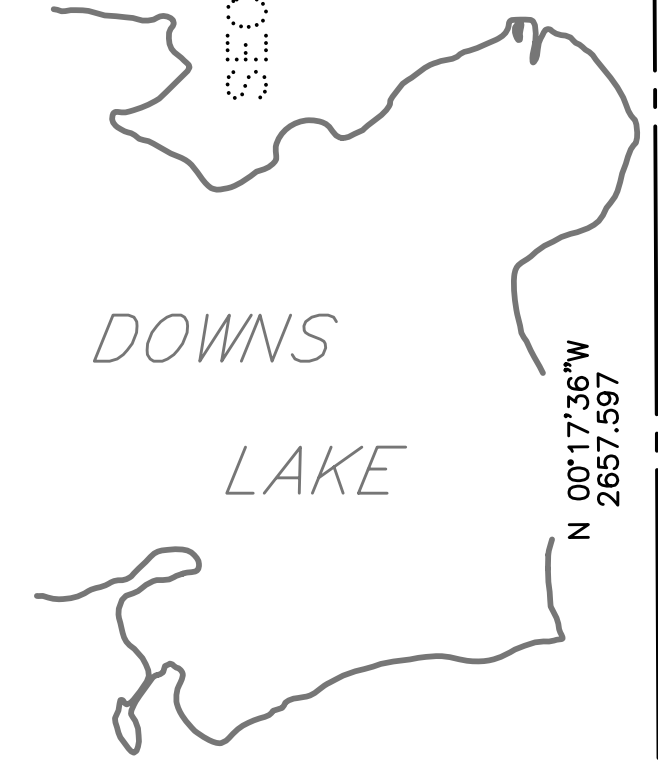
## WASHINGTON COUNTY COORDINATE SYSTEM NAD 83 (1986)

	DATE	BY	DESCRIPTION
DRAWN:	04-28-08	JLB	
REVISED:			
REVISED:			
REVISED:			



SECTION 24, T. 29 N., R. 21 W.

SECTION 01



SECTION 30

SECTION 28

### LEGEND

- |   |   |           |  |
|---|---|-----------|--|
| ▲ | NGS STATION (NATIONAL GEODETIC SURVEY CONTROL - NAD83/1986) | □ ■ ● ○ ● | PUBLIC LAND SURVEY CORNER AS MONUMENTED (SEE NOTE) |
| ▲ | WASHINGTON COUNTY GPS CONTROL STATION (1988 ADJUSTMENT)     | ×         | COMPUTED PLSS CORNER POSITION (NOT MONUMENTED)     |
| ◇ | GPS STATION, TEMPORARY                                      | -----     | LINE OF SIGHT                                      |
| ◇ | GPS STATION (TERTIARY)                                      | ---       | GPS VECTOR (TERTIARY)                              |
| △ | TRAVERSE STATION (TERTIARY)                                 | ~~~~~     | DNR PROTECTED WATER OR WETLAND                     |

### NOTES

**USPLS MONUMENT STATUS:**  
Solid monument symbols at United States Public Land Survey corners indicate the position has been verified or certified. Open monument symbols indicate the position has not been verified or certified.

**DATUM:**  
Coordinates shown on this worksheet are based on the North American Datum of 1983 (NAD83/1986) Washington County Coordinate System.

**GOVERNMENT LOTS:**  
Washington County Survey and Land Management is showing government lot lines on this worksheet as our interpretation of the original plat drawn by the United States Government Land Office as filed at the Minnesota Secretary of State. The user should understand that our interpretation is not legally binding and does not necessarily represent land ownership. In areas of ambiguity, lot lines are drawn to the shoreline that most likely represents the original meandered lake. Any changes in water coverage since the original survey may affect the terminus of some lines.

**ATTENTION:**  
Information shown on this worksheet is subject to change. Users are advised to check for possible revisions. Horizontal Control Reports showing network configuration, station locations, adjustment results and other relevant data are available from the Washington County Survey and Land Management Division.

Prepared by:  
WASHINGTON COUNTY PUBLIC WORKS DEPARTMENT  
SURVEY AND LAND MANAGEMENT DIVISION  
WASHINGTON COUNTY GOVERNMENT CENTER  
14949 62ND STREET NORTH  
STILLWATER, MINNESOTA 55082  
PHONE (651) 430-6875