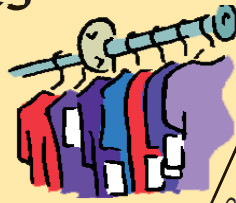


# Donation Opportunities & Resale Stores

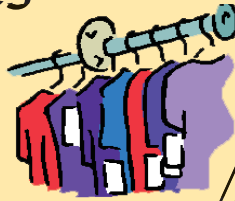


## Materials Accepted

|  | Books | Building Materials | Cell Phones | Clothing & Accessories | Electronics | Eyeglasses | Furniture | Household Items | Recreational Items | Small Appliances | Toys | Vehicles |
|--|-------|--------------------|-------------|------------------------|-------------|------------|-----------|-----------------|--------------------|------------------|------|----------|
| <b>Architectural Antiques</b>  |       |                    |             |                        |             |            |           |                 |                    |                  |      |          |
| 612-332-8344<br>1330 Quincy St NE, Minneapolis                                       |       | X                  |             |                        |             |            |           |                 |                    |                  |      |          |
| <b>Cars for Courage</b>  |       |                    |             |                        |             |            |           |                 |                    |                  |      |          |
| 1-800-440-CARS<br>1460 Curve Crest Blvd, Stillwater                                  |       |                    |             |                        |             |            |           |                 |                    |                  |      | X        |
| <b>Collective Good</b>   |       |                    |             |                        |             |            |           |                 |                    |                  |      |          |
|  |       | X                  |             |                        |             |            |           |                 |                    |                  |      |          |
| <b>Community Helping Hands</b>   |       |                    |             |                        |             |            |           |                 |                    |                  |      |          |
| 651-464-8150 (call first)<br>408 15th St SW, Forest Lake                             |       |                    | X           |                        |             | X          | X         |                 | X                  |                  |      |          |
| <b>Disabled American Veterans</b>  |       |                    |             |                        |             |            |           |                 |                    |                  |      |          |
| 651-487-2002<br>20 W 12th St, Saint Paul<br>For Vehicle donations call: 651-251-7668 |       | X                  | X           | X                      | X           |            | X         | X               |                    |                  |      | X        |
| <b>Domestic Abuse Project</b>  |       |                    |             |                        |             |            |           |                 |                    |                  |      |          |
| 612-874-7063<br>204 Franklin Ave W, Minneapolis                                      |       | X                  |             |                        |             |            |           |                 |                    |                  |      |          |
| <b>Epilepsy Foundation</b>   |       |                    |             |                        |             |            |           |                 |                    |                  |      |          |
| 651-287-2300   |       |                    | X           |                        |             |            | X         |                 | X                  | X                |      |          |
| <b>Family Pathways Community Thrift Store</b>  |       |                    |             |                        |             |            |           |                 |                    |                  |      |          |
| 651-464-4713<br>935 S Lake St, Forest Lake   | X     |                    | X           |                        |             | X          | X         | X               |                    | X                |      |          |
| <b>Goodwill</b>  |       |                    |             |                        |             |            |           |                 |                    |                  |      |          |
| 651-439-4207<br>5899 Nova Scotia Ave N<br>Oak Park Heights                           | X     | X                  | X           | X*                     | X           | X          | X         | X               | X                  | X                | X    | X        |
| 651-731-7942<br>10450 Hudson Rd<br>Woodbury  |       |                    |             |                        |             |            |           |                 |                    |                  |      |          |

\*Restrictions may apply. Call first to see if the item(s) will be accepted.

# Donation Opportunities & Resale Stores



## Materials Accepted

|   | Books | Building Materials | Cell Phones | Clothing & Accessories | Electronics | Eyeglasses | Furniture | Household Items | Recreational Items | Small Appliances | Toys | Vehicles |
|---|-------|--------------------|-------------|------------------------|-------------|------------|-----------|-----------------|--------------------|------------------|------|----------|
| <b>Habitat for Humanity ReStore</b>   |       |                    |             |                        |             |            |           |                 |                    |                  |      |          |
| 612-588-3820<br>510 W County Rd D<br>New Brighton   |       | X                  |             |                        |             | X          |           |                 |                    |                  |      |          |
| <b>Furnish Office &amp; Home</b>  |       |                    |             |                        |             |            |           |                 |                    |                  |      |          |
| 612-789-3322<br>850 15th Ave NE, Minneapolis  |       |                    |             |                        |             | X          |           |                 |                    |                  |      |          |
| <b>Salvation Army</b>   |       |                    |             |                        |             |            |           |                 |                    |                  |      |          |
| 612-332-5855<br>900 N 4th St, Minneapolis   | X     |                    | X           |                        | X           | X          | X         | X               | X                  | X                | X    | X*       |
| <b>Stone Soup Thrift Shop</b>   |       |                    |             |                        |             |            |           |                 |                    |                  |      |          |
| 651-458-9786<br>950 3rd St, Suite 101, Saint Paul Park<br><i>Note: Free furniture pick-up every 2 weeks.<br/>Please call for details.</i> | X     |                    | X           | X                      | X*          | X          | X         | X               | X                  | X*               | X    |          |
| <b>The Children's Chance Inc</b>  |       |                    |             |                        |             |            |           |                 |                    |                  |      |          |
| 763-545-2708<br>PO Box 845, Hopkins   | X     |                    |             |                        |             |            |           |                 |                    |                  |      | X*       |
| <b>USAgain</b>  |       |                    |             |                        |             |            |           |                 |                    |                  |      |          |
| 651-639-0012<br>Call for drop-off location nearest you  |       |                    |             | X                      |             |            |           |                 |                    |                  |      |          |
| <b>Vietnam Veterans of America</b>  |       |                    |             |                        |             |            |           |                 |                    |                  |      |          |
| 651-778-8387<br>3080 Centerville Rd, Little Canada  | X     | X                  | X           | X                      | X           | X          | X         | X               | X                  | X                | X    |          |

\*Restrictions may apply. Call first to see if the item(s) will be accepted.