

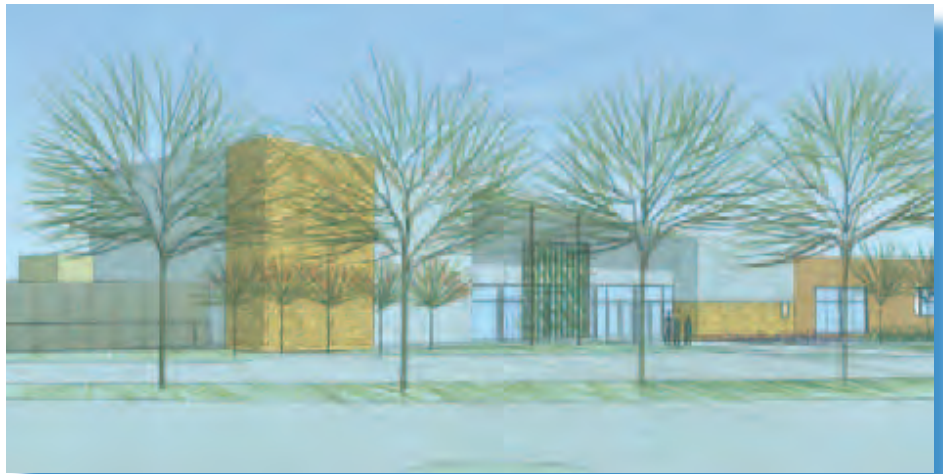
Closer to Home: Service Centers, Library to Break Ground

Washington County is building for the future. New Washington County Service Centers in Forest Lake and Cottage Grove will open in 2007, helping to bring frequently used county services closer to where residents live and work.

“Many of our residents needing county services have a difficult time getting to Stillwater,” District 4 Commissioner Myra Peterson said. “Transportation is a major issue for many of our customers.”

The county expects to break ground on the 40,000 square foot center in Cottage Grove in early May. It will be located on the northwestern edge of Cottage Grove Ravine Regional Park near 90th Street and Keats Avenue South (CSAH 19). Bordered by the regional park, planners expect the center to offer the advantages of being located near a growing population base and being close to one of the county’s beautiful parks.

Continued on page 2



Washington County Service Center in Cottage Grove

Groundbreaking for the 40,000 square-foot county service center in Cottage Grove will take place in May with a projected opening in early 2007. Above is an architect’s illustration of the exterior. See page 2 for an illustration of the county service center in Forest Lake.

Did You Know?

Washington County’s Hazardous Materials Collection facility in Oakdale is open year-round at 1900 Hadley Avenue. Check the “Environmental Update” inside for hours and information.

In this issue. . .

**ENVIRONMENTAL
UPDATE**

**Recycling,
Reuse and
Disposal
Information**

Responsive

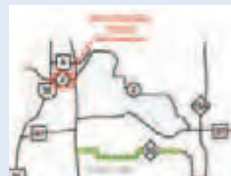
2



**Preparing County
Facilities for 2025**

Effective

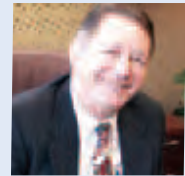
3



**What’s Coming for
2006 Road
Improvements?**

Leadership

5



**Many Hats for a
County
Commissioner**

Washington County Government Center Prepares for 2025

The Metropolitan Council's projections state that Washington County's population will grow to over 340,000 in the next 25 years.

To prepare for an increase of over 100,000 residents, and to ensure the safety of those using our court system, Washington County has initiated a plan to further develop its main Government Center campus in Stillwater.

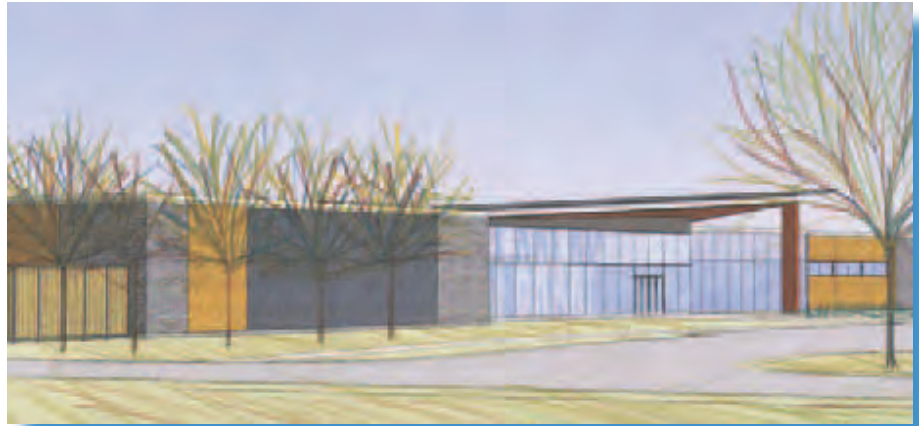
The county is working with Wold Architects to develop a plan which includes:

- more parking (proposed completion 2006)
- expansion of the Law Enforcement Center (LEC) (proposed completion - 2009)
- addition to court facilities (proposed completion - 2009)
- remodeling of the government center (proposed completion - 2010).

The county is currently developing designs for the LEC and courts expansions. Final designs on those buildings are expected to be presented to the County Board of Commissioners for action this summer.

"Washington County has some important decisions in front of it, which will have an impact on many generations of our residents. Stay informed and let us know what you think. It's your county," Board Chair Bill Pulkrabek said.

For more information:
www.co.washington.mn.us
Telephone - 651-430-6000



Washington County Service Center in Forest Lake

Groundbreaking for the Washington County Service Center and library in Forest Lake is scheduled for mid-June with a projected opening of late summer 2007. The project includes a 25,000 square-foot county service center, a 25,000 square foot library and a transit center with a 250-vehicle park and pool lot.

County Service Centers (continued from page 1)

In Forest Lake, the 25,000 square foot County Service Center will be joined by a library of equal size which will replace the current Forest Lake Library. The two adjoining facilities will be part of a 620-acre residential and commercial development called Headwaters at Forest Lake. The development is located just south of the Forest Lake Airport, near the intersection of 202nd Street and Highway 61. Groundbreaking for the Forest Lake facilities is scheduled for mid-June with a projected opening in late summer 2007.

"The County Service Center and library are exciting projects, not only on their own merits, but also for their potential as anchors for an ambitious plan to serve this growing area," District 1 Commissioner Dennis Hegberg noted.

The new County Service Centers and a proposed Stillwater campus expansion are part of a plan to prepare Washington County for the more than 100,000 additional residents who are projected to call the county home in the next 25 years.

Kickoff to Lumberjack Days: Amateur Talent Show at the Historic Courthouse

Talent show on Wednesday, July 19, 2006 at 6 p.m. Cash Prizes

Audition: First come, first served. Sign up at 6:30 p.m.

Auditions begin at 7 p.m. at the Washington County Historic Courthouse, 101 W. Pine Street, Stillwater

Pre-Teen, Teen and Open: Tuesday June 27, 2006, Monday, July 10

Bands: Wednesday, June 28 For more information call 651-430-6233

2006 County Road Construction

“2006 will be a busy year for construction on Washington County roads. We hope you’ll take a few moments to scan the map and learn a bit more about where you’re likely to find people working. Drive safely!”

- Commissioner Gary Kriesel

Frenchman Road/Main Street (County State Aid Highway (CSAH) 8/14), Hugo

This joint project with Anoka County, Lino Lakes and Hugo, is located between I-35 and Trunk Highway 61. Improvements include expanding the roadway to four lanes, adding turn lanes, a center median, a pedestrian/bicycle path, and new drainage systems.

Construction will progress in stages. The contractor plans to build the north side of the new road while traffic is moved to the south side of the existing road, utilizing the shoulders. Then traffic will be moved to the north, on the new lanes, while the contractor constructs the south side of the road. The majority of the work will be completed by November 15, 2006.

Valley Creek Road (CSAH 16) Interchange at I-494, Woodbury

The Valley Creek Road interchange project in Woodbury will replace the entire interchange at Interstate 494, including the ramps, bridges and Valley Creek Road from Weir Drive through Woodlane Drive.

The interchange will add capacity for vehicles and include a pedestrian/bicycle trail on both sides of the bridge. The project will also add auxiliary lanes to each direction of I-494 between the Lake Road and Valley Creek Road interchanges. On the east side, Valley Creek Road will be resurfaced to Bielenberg Drive, to repair the deteriorated and rutted pavement.

The interchange is expected to reopen before Labor Day 2006. The detour routes are signed and do provide access to local area businesses.

The following website has more information:

www.dot.state.mn.us/metro/projects/i494_valleycreekrd

More road project summaries on next page



2006 PROJECT LEGEND

	CONSTRUCTION
	MEDIAN RECONSTRUCTION
	NEW BRIDGE
	TRAFFIC SIGNAL
	INTERCHANGE
	RAILROAD SIGNAL
	ROAD RESURFACING
	PARKING LOT RESURFACING
	CRACK SEALING

County Road Projects:

Continued from previous page

Keats Avenue (CSAH 19) at 90th Street, Cottage Grove

Center-left-turn-lanes will be added on Keats Avenue at 90th Street in Cottage Grove this year in preparation for the 2007 opening of the new Washington County Service Center in Cottage Grove.

Bailey Road (CSAH 18) Trail Connection, Newport

This project will complete the missing link of the trail connection between the Bailey Road & I-494 Interchange area, up the hill to the Bailey Road & Military Road intersection.

For more information, contact Gary Wisbar, Construction Coordinator, at 651 430-4317 or

wisbar@co.washington.mn.us

Current project information is available on the county's website at www.co.washington.mn.us

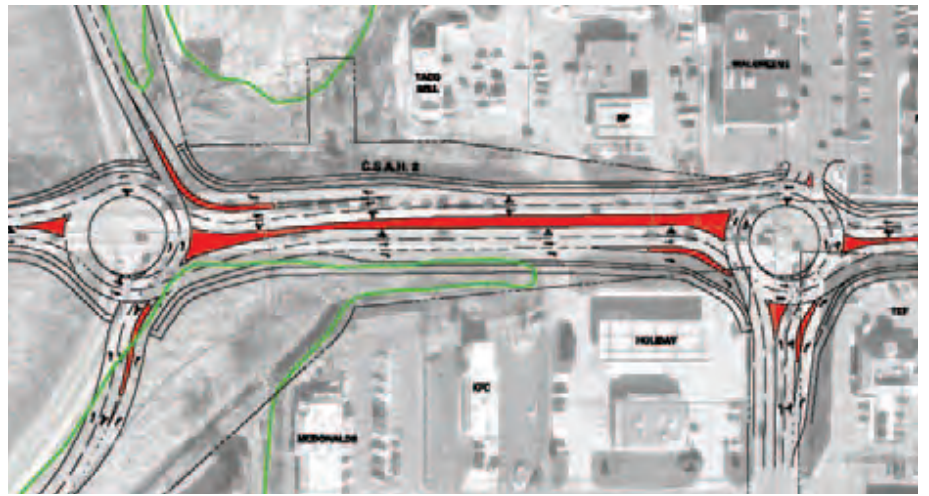
Thank You Adopt a Highway Volunteers!

115 volunteer groups helped maintain 248 total miles in 2005 resulting in a collection of 1412 filled bags, tires, furniture, doors, bikes, scrap metal and a couple of TV's. Washington County estimates a \$60,000 savings due to their work.

Special thanks to

- ERA Muske Co of Forest Lake
- Kodiak Coffee Inc. of Forest Lake

These two groups celebrate 10 years in the program in 2006.



Proposed roundabouts along West Broadway Avenue in Forest Lake. The red areas indicate raised concrete safety medians while green areas indicate approximate edges of wetlands.

Roundabouts Improve Intersection Safety

Highway safety is a high priority for Washington County. A new tool, the modern roundabout, is at the forefront of safe intersection design.

Roundabouts are often confused with traffic circles or rotaries, which are a large, high-speed design prevalent in New Jersey and Massachusetts. Both operate in a circular pattern but the similarities end there. Roundabouts are considered superior to traffic circles because they take up much less space, cause cars to slow down to safer speeds and have a yield sign at each entry which helps drivers avoid the high speed mergers common in a traffic circle.

Since 1990, over 1000 modern roundabouts have been constructed in the United States. Recently they have been constructed in Maplewood, New Prague, and Hudson resulting in increasing interest in their application to the Washington County highway system. Roundabouts provide the following benefits:

Crash reduction-roundabouts have ¼ of the conflict points of a traditional intersection. It is at these points where vehicle paths cross and crashes occur. Additionally, their lower speeds (20 mph) provide more

time to avoid crashes and reduce the severity of those that do occur.

Pedestrian Safety-roundabouts reduce vehicle speeds through intersections providing better reaction time for pedestrians and drivers. Additionally, pedestrians cross fewer lanes at a time.

Delay Reduction-delays are reduced because there is continuous traffic flow through the roundabout, which is particularly apparent during non-rush hour driving. Studies by the Insurance Institute for Highway Safety and others have shown that when replacing signals or stop signs, roundabouts reduce intersection delay by 20 to 50 percent.

Washington County will construct its first roundabout in Woodbury at Radio Drive and Bailey Road in 2007. The county is also studying the construction of a series of seven roundabouts along West Broadway Avenue in Forest Lake.

To learn more about roundabouts go to the Washington County web page, at www.co.washington.mn.us, and click on 'Find out about road construction,' and 'What is a Roundabout?'

Commissioners Wear Many Hats for Washington County

With much of their time in the spotlight as the leaders of Washington County, it might seem surprising that the everyday roles of the County Commissioner are not widely known.

When asked what the biggest misconception is about his job, Washington County Commissioner Dennis Hegberg doesn't hesitate.

"The general assumption is that you have one meeting a week and that's it," Hegberg said.

The Washington County Board of Commissioners does meet once a week, but it's really just a fraction of the job.

Dennis Hegberg has represented northern Washington County since 1989 and has the distinction of being the longest serving Commissioner currently on the Board.

Hegberg said a week in the life of a County Commissioner can vary quite a bit, but he can usually count on at least one meeting or event each day.

As part of his work as Commissioner, Hegberg serves on 19 different boards or committees, ranging from his Chairmanship of the Minnesota Insurance Counties Trust to serving as board liaison to county advisory committees such as the Washington County Library Board and the Groundwater Advisory Committee. He is also a regular visitor to city or township meetings when county issues crop up.

He said it's a challenge juggling the different meetings and prioritizing when scheduling conflicts arise. Morning meetings, evening meetings and sometimes one at each end of the day can be hard on family life.



District 1 Commissioner Dennis Hegberg

A 35-year veteran of the banking industry, Hegberg said it has also taken particularly flexible employers to adjust to his work as a County Commissioner.

"The contribution of businesses that support staff who want to serve through a public position is often overlooked," Hegberg said. "Government couldn't run without them."

Hegberg currently works as a Business Development Officer for Frandsen Bank and Trust in Forest Lake.

Responding to calls from constituents is a significant part of the job. Calls range from five a week up to five a day, and come at any time of the day. Calls commonly deal with zoning issues, property taxes, child support issues or the issue of the day. Most recently in his district, it's been roundabouts.

On weekends, the meeting schedule slows down, which opens up time to take part in community events. Hegberg said these are fun times but they are also a requirement for a successful elected official.

"If you're in politics and want to get reelected you need to attend community events like the Policeman's Ball and Pumpkin Days," Hegberg said, adding that events are often the setting for making contact with constituents and learning more about their issues.

Learning is what Hegberg likes most about the job, noting that the county deals with new topics and concerns almost every week. Sometimes issues are quite clear and decisions are reasonably easy to reach. At other times decisions are more difficult, Hegberg said. He offered waste disposal, land use and human services questions as examples of issues which are often complex.

He said frustrations can come when people expect immediate gratification out of government.

"Government is a big ship and it turns very slowly. There are good reasons for that. Good policy often gets developed over a matter of years, not moments," Hegberg said.

Your County Government - Efficient, Effective and Responsive

Make A Family Disaster Plan

Floods, tornadoes and other occurrences are very real threats to county residents, but with a few simple preparations you and your family's chances of staying safe will increase dramatically.

1. Have a plan for responding to disasters. Discuss the most likely types of disasters for your area, where you'll evacuate, how you will communicate with other family members and even what you will do with your pet in the event of an emergency.

2. Prepare a personal disaster supplies kit. At a minimum your kit should contain a supply of water – one gallon per person, per day, blankets or sleeping bag, a battery-powered flashlight and radio, extra batteries, a first aid kit, prescription medications, change of clothes and sturdy shoes, cash, non-perishable food, special items for infants or elderly, a list of family contacts.

"We've all seen the photos of Hurricane Katrina, but it's important to remember that emergencies can also happen here in Washington County," Commissioner Dick Stafford noted.

Much more information on planning for and responding to a disaster can be found at the following websites:

www.co.washington.mn.us

– Public Health and Environment Department's Emergency Management area.

www.redcross.org – American Red Cross

U.S. Department of Homeland Security – www.ready.gov

Residents can also call Washington County's Emergency Management Office at 651-430-7621 for more information.

Help Your County Serve You Better

How does Washington County government demonstrate that it's what it says it is - efficient, effective and responsive?

Learn more by checking out the 2005 Annual Performance Report, now available on-line at www.co.washington.mn.us

in the "Your County Government" section. You can also get involved in an upcoming performance measurement initiative or serve on a citizen review panel. Those interested may contact Jennifer Menke Blanchard at 651-430-6016.

It's Your Home. Volunteer!

The Board of Commissioners announces the following vacancies:

Community Services Advisory Committee
- Districts 1 and 2

Historic Courthouse Advisory Council
- District 1

Planning Advisory Commission - District 1

Community Development Block Grant
- Private Sector Representative

Minnesota Extension Committee
- 2 At-Large vacancies.

For more information, go to the county website and click on "Citizen Participation" or call 651-430-6014.

Your County Government - Efficient, Effective and Responsive

Washington County Board of Commissioners
Washington County Government Center
14949 62nd Street North
PO Box 6
Stillwater, MN 55082-0006

Staying in Touch is published three times per year as a public service by Washington County.

PRSRT STD
U.S. Postage
PAID
St. Paul, MN
Permit No. 2977

******ECRWSS****
Postal Customer



30% POST CONSUMER FIBER



4/06/95,000