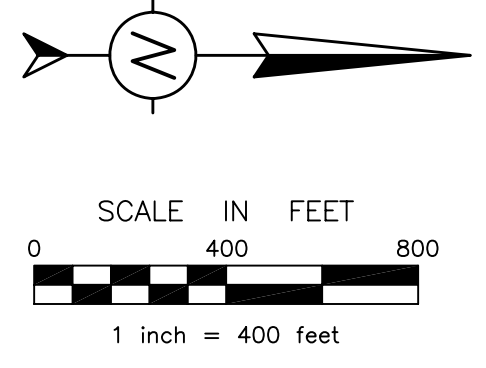


SECTIONS 14 and 23, T. 29 N., R. 20 W.

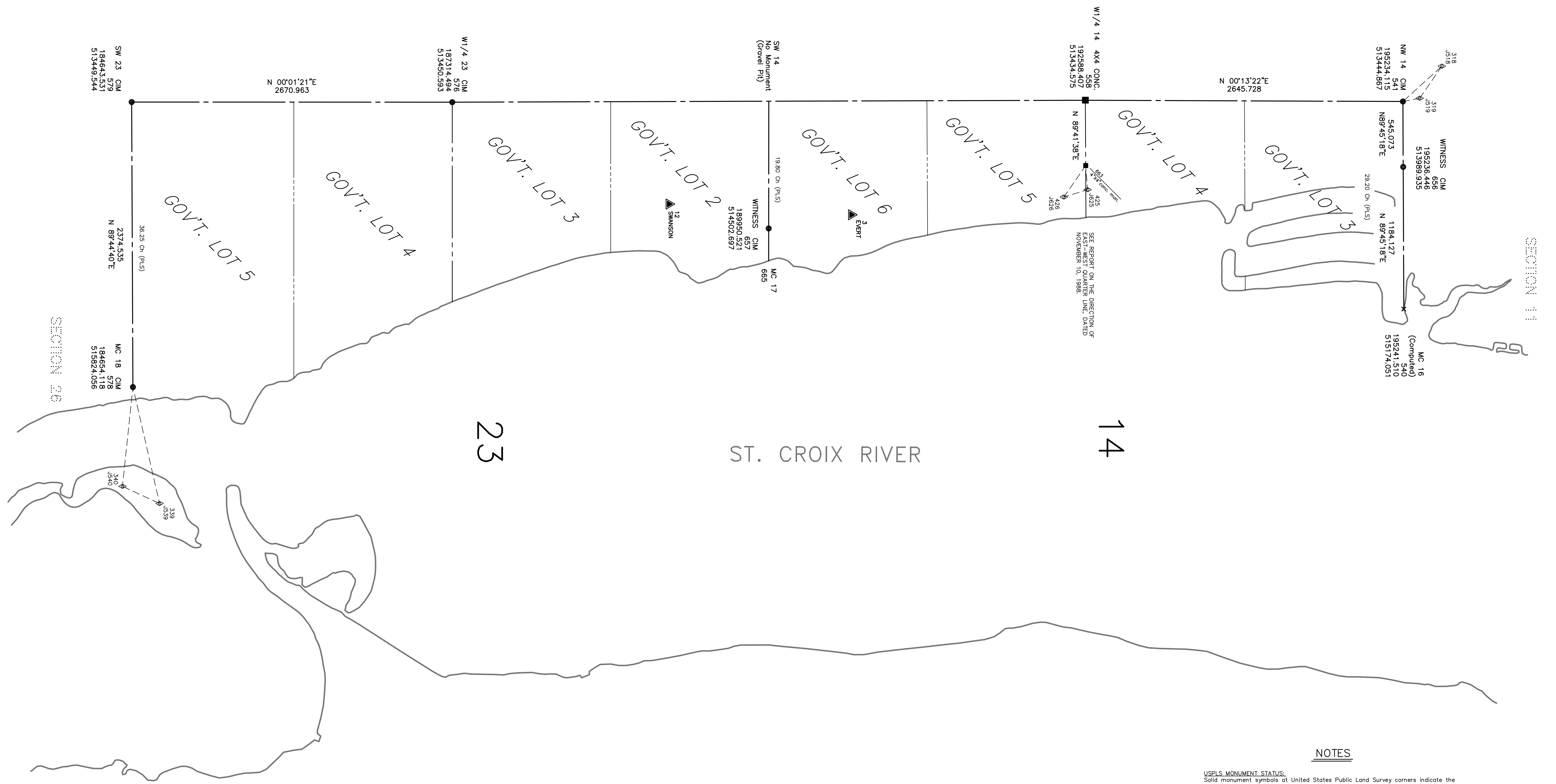
WASHINGTON COUNTY COORDINATE SYSTEM NAD 83 (1986)

DRAWN:	DATE	BY	DESCRIPTION
REVISED:	04-28-08	JLB	
REVISED:			
REVISED:			



SECTION 22

SECTION 15



NOTES

USPLS MONUMENT STATUS:
Solid monument symbols at United States Public Land Survey corners indicate the position has been verified or certified. Open monument symbols indicate the position has not been verified or certified.

DATUM:
Coordinates shown on this worksheet are based on the North American Datum of 1983 (NAD83/1986) Washington County Coordinate System.

GOVERNMENT LOTS:
Washington County Survey and Land Management is showing government lot lines on this worksheet as our interpretation of the original plot drawn by the United States Government Land Office as filed at the Minnesota Secretary of State. The user should understand that our interpretation is not legally binding and does not necessarily represent land ownership. In areas of ambiguity, lot lines are drawn to the shoreline that most likely represents the original meandered lake. Any changes in water coverage since the original survey may affect the terminus of some lines.

ATTENTION:
Information shown on this worksheet is subject to change. Users are advised to check for possible revisions. Horizontal Control Reports showing network configuration, station locations, adjustment results and other relevant data are available from the Washington County Survey and Land Management Division.

LEGEND

- | | |
|---|--|
| <ul style="list-style-type: none"> ▲ NGS STATION (NATIONAL GEODETIC SURVEY CONTROL - NAD83/1986) ▲ WASHINGTON COUNTY GPS CONTROL STATION (1988 ADJUSTMENT) ◇ GPS STATION, TEMPORARY ◇ GPS STATION (TERTIARY) △ TRAVERSE STATION (TERTIARY) | <ul style="list-style-type: none"> □ ■ ● ○ ● PUBLIC LAND SURVEY CORNER AS MONUMENTED (SEE NOTE) × COMPUTED PLSS CORNER POSITION (NOT MONUMENTED) --- LINE OF SIGHT - - - GPS VECTOR (TERTIARY) ~ DNR PROTECTED WATER OR WETLAND |
|---|--|

Prepared by:
WASHINGTON COUNTY PUBLIC WORKS DEPARTMENT
SURVEY AND LAND MANAGEMENT DIVISION
WASHINGTON COUNTY GOVERNMENT CENTER
14949 62ND STREET NORTH
STILLWATER, MINNESOTA 55082
PHONE (651) 430-6675