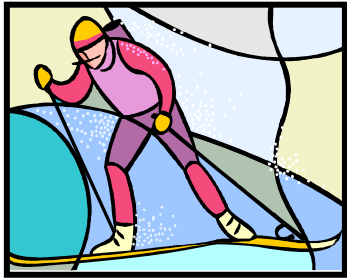




## Ski Trails



### Lake Elmo Park Reserve

## Washington County Parks

Division Office: 651-430-8370  
Lake Elmo Park Reserve  
1515 Keats Ave. N.  
Lake Elmo, MN 55042  
[Parks@co.washington.mn.us](mailto:Parks@co.washington.mn.us)

Sign up for   
winter trail updates at:  
[www.co.washington.mn.us/trails](http://www.co.washington.mn.us/trails)

Ski Conditions Hotline:  
651-430-8368

**Emergency: Call 911**

Revised 11/10

## Fees

A **Washington County Parks vehicle permit** is required on all motorized vehicles. Permits can be purchased at the contact station or through the **Honor Box** when the office is closed.

The Washington County Park annual vehicle permit also provides admittance to Anoka and Carver County Parks.

## Park Hours

7 a.m. to ½ hour after sunset.

## Winter Trails

18.3 kilometers (11.4 miles) of ski trails are groomed in this 2,165 acre park reserve. Five loops are marked from 1.1 miles to 3.8 miles in length and vary from easy to intermediate ski levels.

Winter walking and ice fishing can be accessed from the fishing pier parking lot.

## Shelter

The ski shelter is located next to the ski parking lot. It includes picnic tables and a wood burning stove. A new Nordic Center and lighted ski trails will be available December, 2011.

## MN Ski Pass

Washington County requires all cross-country skiers ages 16 and older to carry the MN State Ski Pass when skiing on Washington County ski trails. Daily or annual passes are available at the Lake Elmo Park Reserve office, County License Centers and wherever DNR licenses are sold.

## Trail Grooming

The Washington County Parks Division grooms trails on a rotating schedule after a base of 6-8 inches is established.

## Ski Trails at other Washington County Parks

**Big Marine Park Reserve**  
(2.4 km/1.5 miles)

**Cottage Grove Ravine Regional Park**  
(8.4 km/5.2 miles)

**Pine Point Regional Park**  
(6.6 km/4.1 miles)

**St. Croix Bluffs Regional Park**  
(9.9 km/6.2 miles)

## Programs

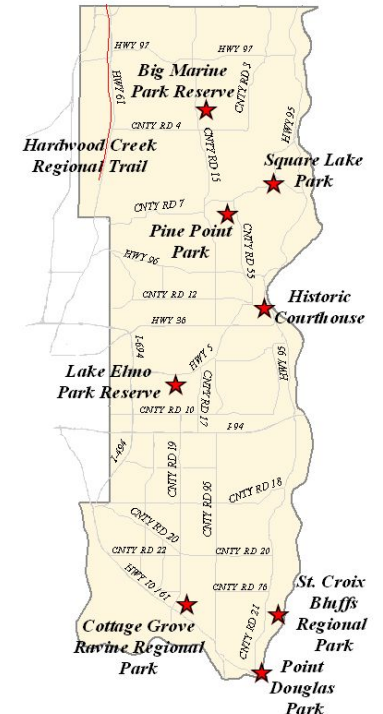
Outdoor winter nature programs are offered at Lake Elmo Park Reserve. Check the office or website for more information.

## Park Rules

For your safety and skiing enjoyment please observe the following rules:

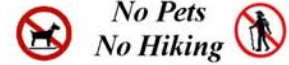
- \* **No dogs or hiking on ski trails.**
- \* Park in the designated parking lot only.
- \* Ski during park hours only.
- \* Ski only on groomed trails.
- \* Observe directional signs.
- \* Ski skating allowed on all loops.
- \* Possession or consumption of alcoholic beverages is prohibited.
- \* Snowshoeing is prohibited on ski trails.

## ★ Washington County Parks ★



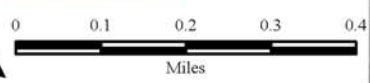
# Lake Elmo Park Reserve Ski Trails

"Please Respect Our Groomed Ski Trails"



- Park Office
- Eagle Point Trail Head
- Future Nordic Center
- Shelter
- Trail Direction
- Caution - Steep Hill
- Trail Junctions
- Park Road

- All Trails are Ski Skate and Traditional**
- Northern Lights - 1.8 km. (1.1 mi.)
  - Big Bluestem - 4.7 km. (2.9 mi.)
  - Lake Elmo - 2.3 km. (1.4 mi.)
  - Brown's Pond - 3.5 km. (2.2 mi.)
  - Eagle Point - 6.0 km. (3.8 mi.)
  - Other Ski Trails



**Washington  
County**  
Washington County Parks  
Ski Conditions Hotline  
(651) 430-8368  
[www.co.washington.mn.us](http://www.co.washington.mn.us)  
Updated: 11/16/10