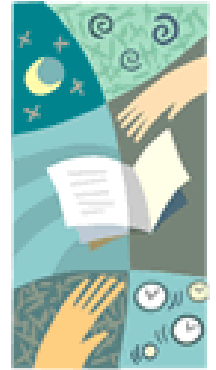


Support Your Library -
Washington County Library

New **MANY HANDS TOGETHER!**
Campaign...

Since 1967, Washington County Library has been serving citizens who live in the communities and townships located in Washington County, Minnesota.



With more than 120,000 of our 197,000+ citizens counted as active library users that means over 60 percent of our citizens use and depend on library services. Actual library visits for the year 2005 were 904,000. And this number does not include our online visits.

Washington County Library does indeed enrich the lives of individual citizens and the community-at-large by providing a world of information, ideas, education and recreation. Washington County Library has something to offer everyone.

Add materials to our collections with a donation to our MANY HANDS TOGETHER! Campaign.

A new **MANY HANDS TOGETHER!** Campaign will help us add to our collections to provide resources that might be limited in supply or not be available. Some examples: Books for children learning to read (Easy Readers), LARGE PRINT books, books in the Spanish language, Instant Book Club Kits.

Your support ensures that Washington County Library remains your resource for ideas, information, education and recreation.

When you complete a donation form and mail it along with your donation, you'll be supporting a county institution valued by its citizens.

Here are some examples of average costs of materials:

- \$40 for 2 children's picture books
- \$50 for 2 best selling novels
- \$60 for 2 large print books for the visually impaired
- \$75 for 2 DVD films
- \$100 for a new edition of a standard reference book

For more information on donating to Washington County Library, please contact **Joyce Schneider**, by phone at 651-275-8503, or via email: joyce.schneider@co.washington.mn.us.

To support Washington County Library's **MANY HANDS TOGETHER!** Campaign, please use this brochure/donation form to make your gift.

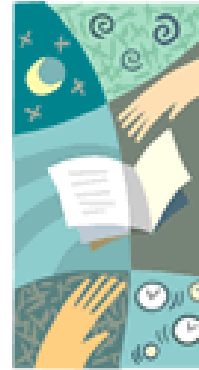
Please place your donation, along with the donation form, in an envelope.

Envelopes may be dropped off at any Washington County Library location, or mailed to:
Washington County Library
8595 Central Park Place
Woodbury, MN 55125

Your contributions may be tax deductible as allowed by law.

www.co.washington.mn.us/library

WASHINGTON COUNTY LIBRARY



I want to contribute to the Washington County Library **MANY HANDS TOGETHER!** Campaign.

Name _____

Address _____

City _____

State _____

Phone _____

Email _____

I would like to make a monetary gift of \$_____.

Please keep my gift anonymous. I understand that I will not be included in donor listings.

Use my gift for the following area:

_____Where the need is greatest

_____Programs for library users

_____Books and materials